

# ANNUAL STATISTICS IN RELATION TO ELECTRIC POWER DEVELOPMENT AND OPERATION

YEAR ENDED 31 MARCH 1973

## Condensed Statistics for the Combined Development and Operations of the New Zealand Electricity Department and Distributing Electrical Supply Authorities

No.			Water	Steam	Oil/Gas*	Total	No.
1	Generating stations .. .. .	No.	60	3	7	70	1
2	Installed capacity .. .. .	kW	3,375,807	642,420	191,007	4,209,234	2
3	Generation .. .. .	kWh	14,109,411,383	2,922,083,171	220,010,817	17,253,505,371	3
4	Maximum load .. .. .	kW				3,476,600	4
5	Retail sales .. .. .	kWh			15,030,514,726	15,030,514,726	5
6	Consumers† .. .. .	No.				1,154,097	2671
7	Population (mean) .. .. .	No.				2,876,388	7
8	Population (total) .. .. .	No.				2,980,738	8
9	Capital expenditure, generation, transmission and distribution .. .. .	\$				1,596,430,387	9
10	Revenue retail sales of electricity .. .. .	\$		177,896,156			10
11	Revenue from other sources .. .. .	\$		3,603,697			11
12	Total revenue .. .. .	\$				181,499,853	12
13	Working costs .. .. .	\$		75,210,822			13
14	Capital charges .. .. .	\$		90,836,251			14
15	Total costs .. .. .	\$				166,047,073	15
16	Net profit .. .. .	\$			15,191,380	15,452,780	16
17	Working costs per kWh sold retail .. .. .	c		0.5003			17
18	Capital charges per kWh sold retail .. .. .	c		0.6043			18
19	Total costs per kWh sold retail .. .. .	c				1.1046	19
20	Total revenue per kWh sold retail .. .. .	c				1.2075	20
21	Revenue retail sales of electricity per kWh sold retail .. .. .	c				1.1835	21
22	Generation per head of mean population .. .. .	kWh			\$998	5,988	22
23	Generation per head of total population .. .. .	kWh				5,788	23
24	Retail sales per head of mean population .. .. .	kWh				5,226	24
25	Retail sales per head of total population .. .. .	kWh				5,043	25
26	Retail sales per total consumers .. .. .	kWh				13,025	26
27	Ratio of capital charges to capital expenditure .. .. .	%				5.69	27
28	Electrical fires reported during year .. .. .	No.				68	28
29	Total electrical accidents during year (fatal) .. .. .	No.				21	29
30	Electric ranges (domestic) .. .. .	No.				803,439	30
31	Electric water-heaters (domestic) .. .. .	No.				849,979	31

NOTES—\*Includes two gas turbine plants with total capacity of 180,000 kW.  
†Consumers classified according to "end usage" of electrical energy.

TABLE I—NEW ZEALAND ELECTRICITY DEPARTMENT ONLY  
Summarised Profit and Loss Account for Year Ended 31 March 1973

	\$	\$		\$
Working costs .. .. .		37,049,641	Revenue—	
Capital charges—			Sales of energy .. .. .	110,625,185
Interest .. .. .	41,561,440		Rent and miscellaneous receipts .. .. .	518,227
Depreciation including interest on				
Depreciation Account .. .. .	17,261,214			
Loan capital repayments .. .. .	8,356,662			
		67,179,316		
Total costs (see table IV) .. .. .		104,228,957		
Transfer to General Reserve Account .. .. .		6,914,455		
		111,143,412		
				111,143,412

TABLE II—NEW ZEALAND ELECTRICITY DEPARTMENT ONLY  
Summarised Balance Sheet as at 31 March 1973

	\$	\$		\$	\$
Capital liability .. .. .		877,182,214	Completed works .. .. .		865,716,367
Internal resources—			Works under construction .. .. .		336,503,539
Depreciation Account .. .. .	175,129,706		Plant, motor vehicles, and tools .. .. .		4,864,604
General Reserve Account .. .. .	185,638,675	360,768,381	Stocks of materials .. .. .		14,481,082
			Capital outlay (see table V) .. .. .		1,221,565,592
			Sundry debtors, etc. .. .. .	23,652,976	
			Less sundry creditors .. .. .	8,148,269	
					15,504,707
			Special Maintenance Suspense Account .. .. .		880,296
		1,237,950,595			1,237,950,595

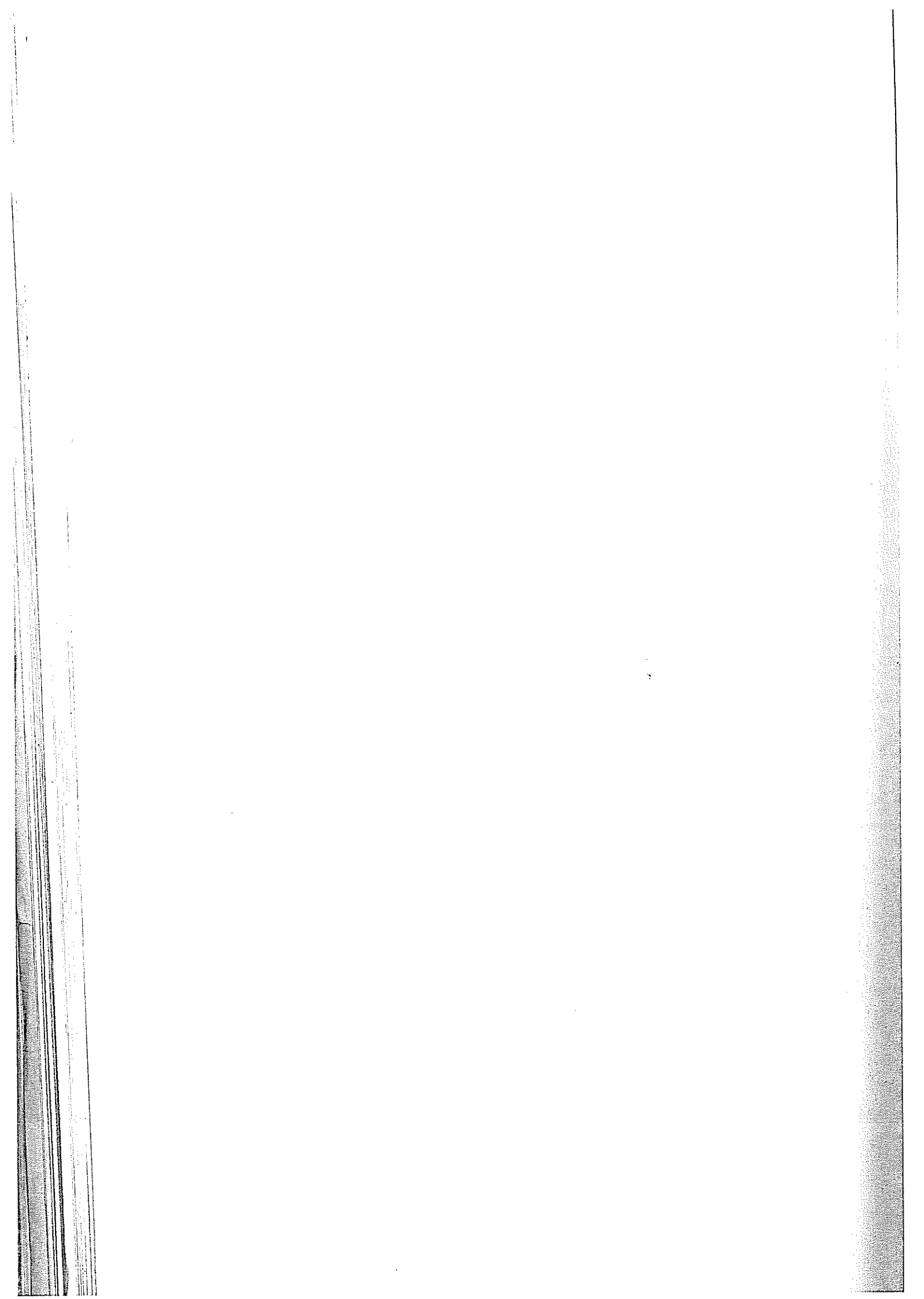


TABLE III—OPERATING RESULTS: NEW ZEALAND ELECTRICITY DEPARTMENT ONLY

	1972-73		1972-73
<b>Maximum load (kilowatts)—</b>		<b>Revenue—</b>	cents
New Zealand 1972-73*	3,476,600	Per unit output	0.6570 0.6588
		Per unit sold	0.7131 0.7149
<b>Average load (kilowatts)—</b>		<b>Working costs (including administration)—</b>	
New Zealand	1,922,907	Per unit output	0.2199
		Per unit sold	0.2381
<b>Average load factor—</b>		<b>Capital charges—</b>	
New Zealand	55.31	Per unit output	0.3990 0.3988
		Per unit sold	0.4332 0.4317
<b>Unit output (generated and purchased)—</b>		<b>Total costs—</b>	
New Zealand	16,844,265,263	Per unit output	0.6188
		Per unit sold	0.6729 0.6698
<b>Units sold—</b>			
New Zealand	15,562,207,664		
<b>Units unsold (used free of charge)—</b>			
New Zealand	197,209,590		
<b>Line losses—</b>			
Transmission and distribution— Units			
New Zealand	140,031,634	percent	6.97

\*See footnote, table VII, for maximum load for total public supply.

TABLE IV—NEW ZEALAND ELECTRICITY DEPARTMENT ONLY  
Analysis of Operating Costs for Year Ended 31 March 1973

	Working Costs (a)	Administration Costs (b)	Capital Charges (c)	Total Costs (d)	Total Cost per kWh	
					Output (e)	Sold (f)
	\$	\$	\$	\$	cents	cents
Hydro-electric stations	5,648,104	3,379,346	37,217,849	46,245,299	0.3371	..
Thermal stations	13,828,573	2,651,174	12,665,000	29,144,747	0.9341	..
Power purchased	28,190	564	—	28,754	0.4571	..
Generated and purchased	19,504,867	6,031,084	49,882,849	75,418,800	0.4477	0.4869
Transmission	1,957,676	1,171,308	9,246,505	12,375,489	0.0735	0.0799
Substations	3,117,245	1,865,095	7,210,640	12,192,980	0.0724	0.0787
Communications	472,311	282,591	281,279	1,036,181	0.0062	0.0067
Retail distribution	687,856	644,630	558,043	1,890,529	0.0112	0.0122
System operation	822,728	492,250	—	1,314,978	0.0078	0.0085
<b>Totals:</b>	<b>26,562,683</b>	<b>10,486,958</b>	<b>67,179,316</b>	<b>104,228,957</b>	<b>0.6188</b>	<b>0.6729</b>
Administration (see column (b))	10,486,958					
	37,049,641	<b>SUMMARY</b>				
		Working Costs	26,562,683	0.1577	0.1715	
		Administration	10,486,958	0.0623	0.0677	
		Capital Charges	67,179,316	0.3988	0.4337	
		<b>Total Costs:</b>	<b>104,228,957</b>	<b>0.6188</b>	<b>0.6729</b>	

TABLE V—NEW ZEALAND ELECTRICITY DEPARTMENT ONLY  
Analysis of Capital Outlay as at 31 March 1973

	Headworks	Station Buildings and Villages	Generating Plant and Machinery	Total	Grand Total
	<i>Completed Works</i>				
	\$	\$	\$	\$	\$
Hydro-electric stations—					
Arapuni	3,087,597	1,172,274	2,326,510	6,586,381	
Karapiro	5,147,454	1,218,966	2,137,639	8,504,059	
Maratai	23,032,950	7,404,975	9,164,077	39,602,002	
Whakamaru	14,151,088	3,124,204	4,833,070	22,108,362	
Atiamuri	13,672,412	2,998,190	4,521,723	21,192,325	
Ohakuri	13,977,508	3,161,401	4,004,485	21,143,394	
Waipapa	10,021,378	2,767,919	2,872,377	15,661,674	
Arahiatia	10,505,543	2,908,398	2,738,118	16,152,059	
Matahina	23,983,402	3,195,931	2,687,581	29,866,914	
Lake Taupo control	417,603	..	..	417,603	
Kaitawa	2,417,820	376,770	628,811	3,423,401	
Tuai	550,688	681,464	967,203	2,199,355	
Piripaua	1,513,134	216,396	425,419	2,154,949	
Lake Waikaremoana control	926,754	..	..	926,754	
Mangahao	1,959,274	444,706	835,718	3,239,698	
Cobb	8,268,049	861,503	799,195	9,928,747	
Lake Coleridge	1,108,250	479,787	734,912	2,322,949	
Arnold	219,992	28,685	53,334	302,011	
Highbank	667,576	264,804	359,802	1,292,182	
Lake Tekapo	5,159,313	1,057,659	886,267	7,103,239	
Lake Pukaki control	4,619,983	..	..	4,619,983	
Roxburgh	33,857,375	5,109,666	8,908,284	47,875,325	
Waitaki	3,750,188	3,085,179	2,571,947	9,407,314	
Lake Wakatipu control	1,384	5,494	..	6,878	
Lake Hawea control	4,907,140	7,800	..	4,914,940	
Benmore	47,291,495	1,026,336	7,427,116	55,744,947	
Aviemore	31,769,811	448,347	5,498,291	37,716,449	
Manapouri	80,897,764	18,619,444	17,897,900	117,415,108	
Monowai	257,312	164,774	141,579	563,665	
	<b>348,140,237</b>	<b>60,831,072</b>	<b>83,421,358</b>	<b>492,392,667</b>	

Therm: Mars Otah Mere Wair

Transm 33 kV 50 kV 66 kV 110 k 220 k 500 k 500 k

Substati 11 kV 33 kV 50 kV 66 kV 110 k 220 k 500 k

Commur Distribut Offices, s

Hydro-el Tonga Manap Te An Upper Other

Thermal Huntly New Pl Evans I

Transmiss 33 kV 50 kV 66 kV 110 kV 220 kV 500 kV

Substation 11 kV a 33 kV a 50 kV a 66 kV a 110 kV 220 kV

Communi Distribut Offices, stc Survey an

Plant, mot Stock of m

Notes—(E (new item).

Inset 1

TABLE V—NEW ZEALAND ELECTRICITY DEPARTMENT ONLY—continued  
Analysis of Capital Outlay as at 31 March 1973—continued

	Headworks	Station Buildings and Villages	Generating Plant and Machinery	Total	Grand Total
<i>Completed Works—continued</i>					
	Fuel Handling Equipment				
ions—	\$	\$	\$	\$	\$
.. .. .	966,345	16,706,364	12,244,037	29,916,746	
.. .. .	707,377	3,440,067	11,404,331	15,551,775	
.. .. .	5,535,058	10,226,744	22,190,834	37,952,636	
.. .. .	21,373,522	9,851,004	12,185,160	43,409,686	
	28,582,302	40,224,179	58,024,362	..	126,830,843
system—					
.. .. .				970,753	
.. .. .				1,607,923	
.. .. .				5,224,451	
.. .. .				25,543,505	
.. .. .				75,557,693	
(submarine cables) <sup>2</sup>				9,647,082	
.. .. .				6,183,463	124,734,870
.. .. .				100,303	
.. .. .				1,580,415	
.. .. .				1,562,259	
.. .. .				6,253,706	
.. .. .				38,961,378	
verter stations) <sup>2</sup>				37,002,537	
.. .. .				21,484,744	106,945,342
n system					3,794,429
stem ..					7,527,975
land and buildings					3,490,241
completed works					865,716,367
<i>Works Under Construction</i>					
stations—					
control ..	143,622,459	5,930,399	6,231,350	155,784,208	
ontrol ..	1,427,826	..	..	1,427,826	
iki ..	5,730,802	..	..	5,730,802	
is ..	51,888,056	..	151,071	52,039,127	
.. .. .	351,455	148,245	388,326	888,026	
	203,020,598	6,078,644	6,770,747	..	215,869,989
is—	Fuel Handling Equipment				
th ..		76,282	..	76,282	
.. .. .	1,810,209	19,416,107	44,733,894	65,960,210	
.. .. .	..	188,772	..	188,772	
	1,810,209	19,681,161	44,733,894	..	66,225,264
stem—					
.. .. .				86,581	
.. .. .				167,343	
.. .. .				34,462	
.. .. .				3,836,305	
arine cables, d.c.)				14,484,082	
.. .. .				3,546	18,612,319
.. .. .				..	
.. .. .				634,247	
.. .. .				153,743	
.. .. .				837,340	
.. .. .				3,618,822	
.. .. .				8,439,847	
system					13,683,999
em ..					805,592
nd and buildings					21,679
stigations of other schemes					4,669,895
.. .. .					16,614,802
orks under constructions					336,503,539
icles and tools					4,864,604
s ..					14,481,082
apital outlay ..					1,221,565,592

<sup>1</sup>\$9,674,183 transferred to new item—500 kV (converter stations).

<sup>2</sup>\$6,183,463 transferred from transmission lines—500 kV d.c.

<sup>3</sup>Includes \$11,010,561 transferred from substations—220 kV, and \$9,674,183 transferred from hydro-electric stations—Benmore (new item).

TABLE VI—STATISTICS OF GENERATING PLANTS, SYSTEM VOLTAGES, CIRCUIT-KILOMETRES OF LINES, DISTRIBUTION SUBSTATIONS, ETC., FOR THE YEAR ENDED 31 MARCH 1973

No.	Supply Authorities	Source of Supply <sup>1</sup>	Year When Supply Commenced	Capacity of Generating Plant				Static Head, in Metres	Transmission	Voltage		Distribution Substations		Circuit-kilometres of Lines	No.
				Water	Steam	Oil/Gas	Total Capacity			Generation	Distribution <sup>2</sup>	Number	kVA		
1	New Zealand Electricity Department <sup>2</sup>	G.	1921	kW	kW	kW	kW								
	North Island			..	..	..	2,082,420	..	500,000	33,000; 11,000; 3,300	78	5,901,640	7,360	1	
	Arapuni			157,800	..	..	..	53	220,000	..	..	..	..	..	
	Aratatia			90,000	..	..	..	34	110,000	..	..	..	..	..	
	Ashurst			84,000	..	..	..	25	50,000	..	..	..	..	..	
	Kaipiro			90,000	..	..	..	30	..	..	..	..	..	..	
	Kaipuro			19,200	..	..	..	23	..	..	..	..	..	..	
	Mangahao			360,000	240,000	..	..	61	..	..	..	..	..	..	
	Maratani			..	..	..	..	61	..	..	..	..	..	..	
	Marsden			72,000	210,000	..	..	35	..	..	..	..	..	..	
	Matuhia			112,000	..	..	..	206; 132; 113	..	..	..	..	..	..	
	Meremere			124,000	..	180,000*	..	16	..	..	..	..	..	..	
	Ohakuri			51,000	..	..	..	36	..	..	..	..	..	..	
	Oranuihu			100,000	192,420	..	..	..	..	..	..	..	..	..	
	Waikaremoana			..	..	..	..	..	..	..	..	..	..	..	
	Waipapa			..	..	..	..	..	..	..	..	..	..	..	
	Waipara			..	..	..	..	..	..	..	..	..	..	..	
	Whakamuri			..	..	..	..	..	..	..	..	..	..	..	
2	South Island	G.	1915	..	..	..	2,010,960	..	500,000	33,000; 11,000; 6,600	6,654	3,093,373	12,617	2	
	Arnold			3,060	..	..	..	13	..	..	..	..	..	..	
	Avenmore			220,000	..	..	..	37	..	..	..	..	..	..	
	Bennore			540,000	..	..	..	92	..	..	..	..	..	..	
	Cobb			32,000	..	..	..	594	..	..	..	..	..	..	
	Coleridge			34,300	..	..	..	149	..	..	..	..	..	..	
	Edenbank			25,200	..	..	..	101	..	..	..	..	..	..	
	Highbank			700,000	..	..	..	177	..	..	..	..	..	..	
	Manapouri			6,000	..	..	..	47	..	..	..	..	..	..	
	Manowai			320,000	..	..	..	46	..	..	..	..	..	..	
	Roxburgh			25,200	..	..	..	30	..	..	..	..	..	..	
	Tapano			105,000	..	..	..	21	..	..	..	..	..	..	
	Waitaki			3,270,960	642,420	180,000	4,093,300	..	..	..	6,642	8,995,013	20,207	..	
	Power Boards			..	..	..	..	..	..	..	..	..	..	..	
1	Ashburton	G.	1923	..	..	..	..	..	..	33,000; 11,000	2,449	82,026	2,682	1	
2	Auckland	G.	1908	..	..	..	..	..	..	10,000; 33,000; 22,000; 11,000	4,318	2,357,743	5,550	2	
3	Bay of Plenty	G.	1939	..	..	..	..	..	..	6,600; 11,000; 6,350	2,628	116,184	3,613	3	
4	Bay of Plenty	G.	1928	..	..	..	..	..	..	33,000; 11,000	1,548	66,379	1,633	4	
5	Duff	G.	1949	..	..	..	..	131	..	11,600	254	11,728	632	5	
6	Cambridge	G.	1921	..	..	..	..	..	..	11,000; 3,300	400	23,555	365	6	
7	Central Canterbury	G.	1963	..	..	..	..	..	..	33,000; 11,000	2,991	201,245	3,191	7	
8	Central Hawke's Bay	G.	1925	..	..	..	..	..	..	33,000; 11,000; 6,600	1,200	43,205	1,974	8	
9	Central Waikato	G.	1921	..	..	..	..	..	..	33,000; 11,000	2,015	240,572	4,208	9	
10	Dannevirke	G.	1925	..	..	..	..	..	..	11,000; 6,600	962	30,445	985	10	
11	Egmont	G.	1963	..	..	..	..	15	..	33,000; 11,000	1,290	93,417	1,610	11	
12	Fedburn	G.	1925	..	..	..	..	..	..	33,000; 11,000	1,316	17,918	2,546	12	
13	Golden Bay	G.	1929	..	..	..	..	..	..	33,000; 11,000; 6,600	415	14,465	559	13	
14	Hawke's Bay	G.	1927	..	..	..	..	115	..	33,000; 11,000	2,398	165,407	3,793	14	
15	Horowhenua	G.	1924	..	..	..	..	..	..	33,000; 11,000; 3,300	1,023	122,375	1,363	15	

(For notes see page 6.)

No.	Supply Authorities	Source of Supply <sup>1</sup>	Year When Supply Commenced	Capacity of Generating Plant				Static Head, in Metres	Voltage			Distribution Substations		Circuit-bro-metres or Lines	No.
				Water	Steam	Oil/Gas	Total Capacity		Generation	Transmission	Distribution <sup>2</sup>	Number	kVA		
<i>POWER BOARDS—continued</i>															
16	Hutt Valley	G.	1924	6,000			6,000	67	33,000	33,000	33,000; 11,000; 6,600	2,031	630,329	1,679	16
17	King Country	G.	1946	1,000			1,000	30	33,000	33,000	33,000; 11,000	1,926	27,951	1,028	17
18	Manawatu-Oroua	G.	1924			1,330	2,330	30	33,000	33,000	33,000; 11,000; 6,600	1,576	162,865	2,205	18
19	Marlborough	G.	1927						33,000		33,000; 11,000; 6,600	1,302	17,063	1,736	19
20	North Auckland	G.	1926								33,000; 11,000	3,160	236,222	4,149	20
21	North Canterbury	G.	1919								33,000; 11,000	2,527	91,867	3,545	21
22	Otago	G.	1926								33,000; 22,000; 11,000; 6,600; 6,550	2,662	116,360	4,132	22
23	Otago Central	I. & G.	1923	8,335			8,335	{ 309; 301 244; 125; 117; 65 }	33,000		33,000; 11,000; 6,600	1,158	38,277	1,943	23
24	Poverty Bay	G.	1912								50,000; 11,000	2,055	138,736	2,455	24
25	South Canterbury	G.	1925				980				33,000; 22,000; 11,000; 6,600	2,964	109,953	2,532	25
26	Taranaki	G.	1927	4,800			4,800	91	33,000		33,000; 11,000; 6,600	1,526	104,486	1,510	26
27	Tairāngia	G.	1925								33,000; 11,000	1,086	23,791	9,262	27
28	Tairāngia	G.	1926								50,000; 33,000; 11,000; 6,300	1,817	126,560	3,180	28
29	Te Awamutu	G.	1921								11,000	1,903	37,160	1,149	29
30	Thames Valley	G.	1921								33,000; 11,000	3,102	415,150	6,167	30
31	Waimea	G.	1933	450			450	293; 32; 8	33,000		33,000; 11,000	1,379	123,001	2,160	31
32	Wairarapa	G.	1929	770			770	131; 88	3,300		33,000; 11,000; 3,300	2,772	150,923	2,703	32
33	Wairere	G.	1925	2,804			2,804	41; 20	33,000		33,000; 22,000; 11,000; 6,600	573	20,146	984	33
34	Wairoa	G.	1923								11,000	1,436	121,023	1,743	34
35	Waitaki	G.	1926								33,000; 11,000	1,436	121,023	1,743	35
36	Waitemata	G.	1926	346		6,000	6,000				33,000; 11,000	4,596	650,595	7,978	36
37	Waitomo	G.	1926					116			33,000; 11,000	1,293	79,868	2,003	37
38	Wanganui-Rangitikei	I. & G.	1925	3,414			3,414	{ 86; 76; 49; 33; 30 }	6,000; 3,300; 2,300; 2,200; 415; 400		33,000; 22,000; 11,000; 6,600	2,590	147,698	3,811	38
39	West Coast	I. & G.	1926	28,764							11,000	968	46,290	1,978	39
				28,764		8,607	37,371					70,087	7,621,510	97,275	
<i>CITY COUNCILS</i>															
1	Christchurch	G.	1903								66,000; 11,000	1,438	606,738	2,385	1
2	Dunedin	I. & G.	1907	65,200			65,200	{ 218; 57; 51; 34 }	6,000; 2,400	{ 110,000; 33,000 }	33,000; 11,000; 6,600; 3,300	1,490	543,141	1,525	2
3	Hamilton	G.	1913								33,000; 11,000	60	80,950	248	3
4	Invercargill	B.	1914								33,000; 11,000	252	91,126	391	4
5	Napier	B.	1913			400	400				33,000; 11,000	131	45,000	127	5
6	Nelson	B.	1923								33,000; 11,000	116	63,235	136	6
7	New Plymouth	B.	1906	3,500			3,500	79	6,600		11,000; 11,000	1,607	118,086	978	7
8	Pahmerton North	B.	1924	2,000			2,000		9,300		33,000; 11,000	242	162,800	296	8
9	Tairāngia	I. & G.	1915	3,440			3,440	33; 24	3,000	50,000	50,000; 33,000; 11,000	53	10,575	141	9
10	Timaru	I. & G.	1908								11,000	111	40,375	266	10
11	Wellington	G.	1888								33,000; 11,000; 3,300	596	625,223	1,878	11
12	Whangarei	B.	1915								11,000	141	31,005	134	12
				72,140		2,400	74,540					5,656	2,426,254	8,505	

(For notes see page 6.)

TABLE VI—STATISTICS OF GENERATING PLANTS, SYSTEM VOLTAGES, CIRCUIT-KILOMETRES OF LINES, DISTRIBUTION SUBSTATIONS, ETC., FOR THE YEAR ENDED 31 MARCH 1973—continued

No.	Supply Authorities	Source of Supply <sup>1</sup>	Year When Supply Commenced	Capacity of Generating Plant				Static Head, in Metres	Generation	Transmission	Voltage		Distribution Substations		Circuit-kilometres of Lines	No.
				Water	Steam	Oil/Gas	Total Capacity				Distribution <sup>2</sup>	kVA	Number			
1	Bluff	B.	1903	..	..	..	..	..	..	..	11,000; 3,300	..	40	7,822	33	
2	Kaapoi	B.	1917	..	..	..	..	..	..	..	11,000	..	26	6,000	30	
3	Lyttelton	C.	1917	..	..	..	..	..	..	..	11,000	..	26	7,658	41	
4	Rangiora <sup>3</sup>	B.	1919	..	..	..	..	..	..	..	11,000	..	28	7,850	37	
5	Riccarton	G.	1916	..	..	..	..	..	..	..	11,000	..	28	15,300	57	
6	Taumarunui	I. & B.	1924	1,943	..	..	1,343	3,300	..	..	11,000; 3,300	..	49	8,425	36	
7	Taupo	I. & G.	1952	2,500	..	..	2,500	3,300	..	..	33,000; 11,000	..	461	35,452	461	
8	Te Aroha	B.	1906	..	..	..	..	400	..	..	11,000	..	35	6,010	79	
9	Thames	B.	1914	..	..	..	..	..	..	..	11,000	..	40	9,700	91	
10	Waoroa	B.	1913	..	..	..	..	..	..	..	11,000	..	46	7,185	53	
11	Whakatane	B.	1922	..	..	..	..	..	..	..	33,000; 11,000; 3,300	..	55	11,800	55	
				3,943	..	..	3,943	..	..	..	..	..	806	115,352	956	
1	Heathcote	G.	1914	..	..	..	..	..	..	..	11,000	..	37	10,835	57	
2	Kaikoura	B.	1922	..	..	..	..	..	..	..	11,000	..	178	5,065	179	
				..	..	..	..	..	..	..	..	..	215	15,904	236	
1	AREA ELECTRIC AUTHORITY	G.	1901	..	..	..	..	..	..	..	33,000; 11,000	..	1,241	74,530	1,446	
				..	..	..	..	..	..	..	..	..	1,241	74,530	1,446	
1	GOVERNMENT DEPARTMENT	G.	1925	6,000	..	..	6,000	6,600	..	..	33,000; 11,000; 6,600	..	6,515	279,803	7,243	
				6,000	..	..	6,000	..	..	..	..	..	6,515	279,803	7,243	
	GRAND TOTALS	..	..	3,375,807	642,420	191,007	4,209,234	..	..	..	..	..	84,647	19,240,563	128,605	

Notes—<sup>1</sup>G = Government supply; B = Bulk supply from another supply authority; I. & G. = Independent supply (own generating plant.)  
<sup>2</sup>Low tension is 400/230 volts, 50 Hertz a.c.  
<sup>3</sup>Includes Rangiora Borough Council.  
<sup>4</sup>Includes Southland Electric Power Supply.  
<sup>5</sup>Also included with New Zealand Electricity Department.  
<sup>6</sup>Gas turbine plant.  
<sup>7</sup>Includes Southland Electric Power Supply.  
<sup>8</sup>Taken over by North Canterbury Electric Power Board, 1 July 1973.

No.	Supply Authorities	Maxi- mum Load	Annual Load Factor	Generated				Generated and Purchased	Sold			Units Sold (Average) Per Head of Population	No.	
				Water	Steam	Oil/Gas	Purchased		In Bulk for Resale	Retail to Consumers				Non- productive <sup>1</sup>
										Domestic	Non-domestic			
kWh	%	kWh	kWh	kWh	kWh	kWh	kWh	kWh	kWh	kWh	kWh	kWh	%	
1	NEW ZEALAND ELECTRICITY DEPARTMENT*	3,476,600	55.31	13,717,620,547	2,898,501,700	221,652,900	6,290,116	16,844,265,263	13,099,062,898	2,907,515,165	1,372,057,599	..	..	
1	Power Boards	..	..	..	..	..	..	..	..	..	..	..	..	
2	Ashburton	19,847	62.97	..	..	..	109,480,331	109,480,331	..	27,444,554	5,240,707	4,191	4.79	
3	Auckland	551,208	49.24	..	..	..	2,377,780,314	2,377,780,314	..	1,179,794,129	122,969,256	4,755	5.17	
4	Bay of Islands	22,334	70.70	..	..	..	138,327,007	138,327,007	..	55,921,320	12,664,157	3,368	3.8	
5	Bay of Plenty	49,913	62.95	..	..	..	275,252,334	275,252,334	31,965,630	172,209,545	1,529,859	7,085	0.62	
6	Buller	7,910	68.05	630,432	..	1,425	46,515,495	47,155,352	..	32,551,227	2,691,810	5,614	5.71	
7	Cambridge	10,746	51.24	..	..	..	48,231,450	48,231,450	..	15,951,304	5,185,623	3,978	10.75	
8	Central Canterbury	52,444	57.37	..	..	..	263,558,805	263,558,805	215,160	138,532,167	16,043,777	5,262	5.82	
9	Central Hawke's Bay	11,519	59.82	..	..	..	60,358,773	60,358,773	70,240	12,061,837	6,039,616	4,240	10.01	
10	Central Waikato	73,466	50.04	..	..	..	327,188,607	327,188,607	..	117,424,400	20,479,840	3,919	6.26	
11	Danewharu	10,709	56.14	..	..	..	52,662,466	52,662,466	..	12,078,828	4,586,436	3,696	8.71	
12	Egmont	23,999	62.51	1,520,208	..	..	126,601,579	126,601,579	..	49,031,402	9,566,679	4,654	7.78	
13	Fairlie	31,010	56.75	..	..	..	154,147,494	154,147,494	321,560	53,718,261	14,870,856	3,924	9.66	
14	Golden Bay	8,685	68.91	973,410	..	..	57,426,143	57,426,143	..	41,842,128	2,260,665	2,920	4.21	
15	Hawke's Bay	97,642	52.74	..	..	..	451,130,970	451,130,970	60,540,500	232,971,060	134,198,600	15,220	13.13	
16	Horowhenua	44,997	53.45	..	..	..	210,676,881	210,676,881	..	59,756,016	18,506,199	4,030	5.99	
17	Hutt Valley	214,773	46.22	..	..	..	869,545,609	869,545,609	..	300,728,593	43,986,242	4,182	5.06	
18	King Country	24,250	49.28	27,000,400	..	..	77,694,543	77,694,543	9,655,604	45,709,320	7,928,353	4,568	8.36	
19	Manawatu-Oroua	79,239	52.79	6,046,364	..	..	366,440,191	366,440,191	166,213,200	89,197,896	13,053,488	4,585	6.51	
20	Manhought	22,478	59.70	..	..	12,940	111,495,117	117,550,821	74,395,061	33,394,662	9,761,698	3,616	8.30	
21	North Auckland	55,844	68.32	..	..	..	334,191,270	334,191,270	66,134,960	135,532,077	13,767,257	5,855	5.13	
22	North Canterbury	25,654	60.43	..	..	..	135,808,570	135,808,570	30,242,500	29,207,912	10,814,891	3,000	10.24	
23	Otago	27,049	57.49	..	..	..	136,220,849	136,220,849	..	45,957,901	13,885,096	5,160	10.19	
24	Otago Central	20,182	56.23	52,394,040	..	..	47,018,904	47,018,904	910,800	30,474,992	10,487,727	4,645	10.64	
25	Poverty Bay	36,213	51.49	..	..	12,800	163,320,251	163,320,251	..	47,040,895	13,480,413	3,200	8.25	
26	South Canterbury	46,927	61.04	..	..	..	250,902,188	250,902,188	90,908,330	48,372,822	8,307,369	3,939	5.50	
27	Taranaki	24,655	67.05	10,670,320	..	..	144,822,917	144,822,917	..	57,922,430	12,986,395	4,892	8.97	
28	Tairāwhiti	6,885	59.09	..	..	..	35,639,475	35,639,475	..	8,822,633	4,090,852	3,870	11.50	
29	Tairāwhiti	49,709	53.12	12,797,170	..	..	150,587,623	150,587,623	..	63,655,510	10,896,333	5,511	5.35	
30	Tairāwhiti	15,460	61.62	..	..	..	83,445,220	83,445,220	17,680	28,254,328	6,593,658	3,963	7.90	
31	Tairāwhiti	119,067	65.49	..	..	..	683,116,152	683,116,152	37,100,057	438,640,886	29,037,580	7,811	4.49	
32	Waikanae	46,906	56.72	..	..	..	232,055,492	232,055,492	..	104,773,954	10,880,265	3,688	6.82	
33	Waikato	37,250	50.79	..	..	244,300	165,730,370	165,730,370	73,624,080	43,796,040	15,735,311	4,041	9.49	
34	Waikato	3,849	52.86	..	..	..	3,318,750	3,318,750	3,428,325	48,499,969	2,496,717	3,672	17.34	
35	Waikato	9,826	52.37	..	..	..	45,863,550	45,863,550	19,200,090	11,915,208	3,490,652	3,962	13.48	
36	Waikato	20,274	55.92	..	..	..	99,318,523	99,318,523	..	61,227,827	6,534,049	4,326	6.58	
37	Waitemata	213,627	39.97	..	..	..	747,822,392	747,822,392	..	509,198,114	53,276,717	2,915	7.12	
38	Waitemata	17,603	53.84	..	..	..	83,016,960	83,016,960	..	30,319,960	8,121,640	4,367	9.76	
39	West Coast	65,782	52.60	19,927,077	..	..	301,441,648	301,441,648	970,335	108,081,067	19,801,642	4,139	6.53	
40	West Coast	16,781	57.66	..	..	..	64,632,132	64,632,132	..	41,487,606	8,028,159	3,104	9.58	
41	West Coast	..	..	159,333,248	..	270,945	10,045,361,692	10,204,965,885	591,659,321	4,988,602,131	604,399,833	4,943	6.29	

(For notes see page B.)



TABLE VII—RESULTS OF GENERATION, DISTRIBUTION, AND CONSUMPTION FOR THE YEAR ENDED 31 MARCH 1973—continued

No.	Supply Authorities	Maximum Load	Annual Load Factor	Generated				Oil/Gas	Generated and Purchased	In Bulk for Resale	Sold		Non-productive <sup>1</sup>	Units Sold (Average) per Head of Population <sup>2</sup>	No.	
				Water	Steam	kWh	Purchased				kWh	Retail to Consumers				Non-productive <sup>1</sup>
1	Christchurch	200,641	42.03	kWh	1,070,103,379	kWh	1,070,103,379	kWh	319,460,744	kWh	58,373,717	5.95	4,207	1		
2	Dunedin	149,080	46.47	..	436,519,516	..	608,947,316	..	372,027,244	..	39,027,589	6.25	4,942	2		
3	Hamilton	23,903	46.47	..	105,367,330	..	156,497,800	..	48,490,400	..	5,837,850	3.23	4,185	3		
4	Invercargill	34,752	51.35	..	60,540,500	..	60,540,500	..	51,377,081	..	7,942,510	3.08	3,660	4		
5	Napier	12,750	54.20	..	73,624,080	..	73,624,080	..	28,959,732	..	3,114,061	3.14	4,400	5		
6	Nelson	15,152	55.47	..	185,492,525	..	201,079,605	..	42,542,427	..	5,203,838	7.07	4,210	6		
7	New Plymouth	45,104	46.47	..	166,213,200	..	166,213,200	..	111,191,681	..	14,642,469	7.28	4,072	7		
8	Palmerston North	41,014	46.47	86.972	17,050,200	..	39,121,170	364,200	109,754,646	..	6,257,164	6.16	3,723	8		
9	Tauranga	10,216	45.72	..	90,908,320	..	90,908,320	..	16,464,290	..	3,351,421	6.64	5,000	9		
10	Timaru	18,624	55.72	..	673,025,960	..	673,025,960	..	55,760,809	..	4,721,790	5.19	4,172	10		
11	Wellington	170,560	45.05	..	66,080,630	..	66,080,630	..	353,565,830	..	53,782,895	7.99	5,010	11		
12	Whangarei	14,826	50.80	..	3,311,596,262	..	3,311,596,262	364,200	37,093,896	..	4,191,271	6.94	3,684	12		
					210,085,850		3,311,596,262	364,200	1,136,689,698		209,236,515	6.91	4,404	..		
1	Bluff	2,564	45.70	..	10,254,968	..	10,254,968	..	4,952,037	..	1,143,291	11.14	2,807	1		
2	Kaipoi	2,975	52.65	..	13,720,600	..	13,720,600	..	9,253,660	..	1,064,670	7.04	2,962	2		
3	Lytelton	3,168	49.59	..	13,760,877	..	13,760,877	..	7,792,995	..	1,041,858	5.12	4,464	3		
4	Rangiora	11,088	45.18	..	5,328,000	..	5,328,000	..	4,176,298	..	1,595,045	2.15	6,091	4		
5	Riccarton	4,092	41.95	..	43,082,720	..	43,082,720	..	23,132,122	..	943,720	2.15	6,091	5		
6	Taumarunui	14,370	54.38	..	9,655,279	..	17,981,499	1,080	9,506,853	..	1,451,980	8.07	4,012	6		
7	Taupo	3,204	44.28	..	54,407,640	..	68,453,158	..	35,146,749	..	3,930,050	7.80	4,283	7		
8	Te Aroha	2,765	47.97	..	12,427,559	..	12,427,559	..	4,306,789	..	891,268	5.64	3,620	8		
9	Thames	4,695	47.29	..	24,225,200	..	24,225,200	..	19,179,496	..	1,870,600	7.72	3,008	9		
10	Waeroa	4,695	47.29	..	19,200,090	..	19,200,090	..	12,344,990	..	5,400,256	7.56	3,203	10		
11	Whakatane	7,956	45.78	..	31,905,630	..	31,905,630	..	20,344,140	..	2,276,013	7.13	3,498	11		
					22,171,738		238,978,563	1,080	147,338,651	98,167,756	15,647,074	5.95	4,407	..		
1	Heathcote	9,211	47.18	..	33,937,490	..	33,937,490	..	19,191,660	..	1,913,781	5.64	5,012	1		
2	Kaikoura	2,048	62.40	..	11,193,900	..	11,193,900	..	6,172,387	..	1,423,340	12.72	3,527	2		
					45,131,390		45,131,390	..	25,364,047	..	3,337,121	7.39	4,563	..		
	Sundry Private Plants	..	..	..	..	..	23,581,471	23,581,471	..	..	..	..	..	..		
	AREA ELECTRIC AUTHORITY	44,364	48.27	..	187,591,020	..	187,591,020	107,250	106,671,870	62,139,817	18,672,083	9.95	3,283	1		
	Rotorua	..	..	..	187,591,020	..	187,591,020	107,250	106,671,870	62,139,817	18,672,083	9.95	3,283	1		
	GOVERNMENT DEPARTMENT	99,240	51.47	..	413,852,866	..	447,439,066	166,762,768	136,508,021	110,427,335	33,740,942	12.02	3,623	1		
	..	..	..	..	413,852,866	..	447,439,066	166,762,768	136,508,021	110,427,335	33,740,942	12.02	3,623	..		
	..	..	..	..	14,109,411,383	2,922,083,171	232,010,817	7,388,912,149	17,253,505,371	2,223,945,965	12,881,517	12.88	5,005	..		
	GRAND TOTALS	..	..	..	..	..	17,253,505,371	..	..	..	..	..	..	..		

Units generated per head of total population, 5,788 kWh. Units sold retail per head of mean population, 5,998 kWh. Maximum load for public supply: New Zealand, 3,476,700 kW. Annual load factor: New Zealand, 56.65 percent.

Units generated per head of total population, 5,788 kWh. Units sold retail per head of mean population, 5,998 kWh. Maximum load for public supply: New Zealand, 3,476,700 kW. Annual load factor: New Zealand, 56.65 percent.

<sup>1</sup>Percentage calculated on generated plus purchased minus bulk for resale except <sup>2</sup>Includes Southland Electric Power Supply. <sup>3</sup>Shown separately but included with New Zealand Electricity <sup>4</sup>Now included in North Canterbury E.P.B.

TABLE VIII (PART I)—FINANCIAL RESULTS OF GENERATION, DISTRIBUTION, AND OPERATION FOR THE YEAR ENDED 31 MARCH 1973

No.	Supply Authorities	Revenue				Total	Cost of Energy				Total	No.	
		Sales of Energy		Trading Account Profit	Other Sources		Operating Costs <sup>a</sup>	Generation		Purchased <sup>a</sup>			
		Retail	Bulk for Retail <sup>1</sup>					Management and General	Capital Charges <sup>a</sup>				
1	NEW ZEALAND ELECTRICITY DEPARTMENT <sup>4</sup>	\$ 9,847,069	\$ 100,778,116	\$ ..	\$ 518,227	\$ 111,143,412	\$ 19,476,677	\$ 6,031,084	\$ 49,882,849	\$ 75,390,610	\$ 28,190	\$ 75,418,800	1
1	ASHBURTON ..	1,410,020	..	29,537	47,699	1,487,256	..	..	..	..	755,777	755,777	1
2	AUCKLAND ..	27,325,703	..	7,816	259,991	27,593,510	..	..	..	..	18,782,818	18,782,818	2
3	BAY OF ISLANDS ..	17,925,585	..	56	35,060	1,827,701	..	..	..	..	913,688	913,688	3
4	BAY OF PLENTY ..	2,679,910	276,303	14,657	38,436	3,009,306	..	..	..	..	1,873,592	1,873,592	4
5	BULLER ..	543,174	..	374	3,054	546,602	4,812	..	..	4,812	305,713	310,525	5
6	CAMBRIDGE ..	581,678	..	970	5,042	587,590	..	..	..	..	377,432	377,432	6
7	CENTRAL CANTERBURY ..	3,746,023	2,104	3,178	38,319	3,789,624	..	..	..	..	1,924,532	1,924,532	7
8	CENTRAL HAWKE'S BAY ..	696,167	..	6,675	6,675	702,842	..	..	..	..	431,027	431,027	8
9	CENTRAL WAIKATO ..	4,234,933	..	6,912	26,103	4,268,791	..	..	..	..	2,568,370	2,568,370	9
10	DANNEVIKRE ..	686,837	..	10,735	12,649	710,221	..	..	..	..	392,010	392,010	10
11	EGMONT ..	1,535,799	..	9,281	28,253	1,573,333	2,874	..	..	..	903,828	906,702	11
12	FRANKLIN ..	1,841,132	3,660	..	15,897	1,860,689	..	..	..	..	1,128,945	1,128,945	12
13	GOLDEN BAY ..	439,191	..	4,231	15,522	458,944	2,465	..	400	2,865	333,227	336,092	13
14	HAWKE'S BAY ..	4,731,166	474,196	22,204	23,674	5,251,240	..	..	..	..	3,424,293	3,424,293	14
15	HOROWHENUA ..	3,056,588	..	18,082	32,425	3,107,095	..	..	..	..	1,619,688	1,619,688	15
16	HUTT VALLEY ..	12,071,381	..	40,861	156,428	12,268,670	..	..	..	..	7,166,226	7,166,226	16
17	KING COUNTRY ..	1,025,620	106,123	1,209	95,091	1,228,043	31,834	400	58,867	91,101	616,909	708,010	17
18	MANAWATU-OROUA ..	2,639,328	1,332,843	9,527	11,978	3,993,676	29,282	..	..	29,282	2,809,087	2,809,087	18
19	MARLBOROUGH ..	1,670,660	..	60,267	60,267	1,730,927	..	..	..	..	783,353	783,353	19
20	NORTH AUCKLAND ..	3,098,522	587,720	31,360	47,950	3,765,552	..	..	..	..	2,163,999	2,163,999	20
21	NORTH CANTERBURY ..	1,536,382	240,607	6,434	26,453	1,809,876	..	..	..	..	966,224	966,224	21
22	OTAGO ..	1,610,876	..	10,079	39,699	1,660,654	..	..	..	..	996,013	996,013	22
23	OTAGO CENTRAL ..	1,089,039	..	15,970	28,247	1,133,256	32,457	16,593	66,686	115,736	385,053	500,789	23
24	POVERTY BAY ..	2,201,165	..	17,692	19,894	2,338,751	28,883	9,875	..	38,758	1,268,925	1,307,683	24
25	SOUTH CANTERBURY ..	2,370,033	675,612	46,435	17,483	3,109,563	..	..	..	..	1,765,469	1,765,469	25
26	TARANAKI ..	1,560,118	..	..	28,415	1,588,533	37,857	13,029	55,022	105,908	814,442	920,350	26
27	TARANUI ..	525,005	..	2,553	5,503	533,061	..	..	..	..	253,158	253,158	27
28	TAURANGA ..	2,986,642	..	..	29,500	3,016,142	..	..	..	..	1,516,173	1,516,173	28
29	TE AWAMUTU ..	899,357	215	1,501	16,468	917,541	..	..	..	..	571,009	571,009	29
30	THAMES VALLEY ..	6,384,250	321,453	24,836	68,013	6,998,552	..	..	..	..	4,574,008	4,574,008	30
31	WAIKATO ..	1,928,436	556,538	11,508	80,793	2,577,275	3,561	1,000	..	4,561	1,704,675	1,709,236	31
32	WAIKATO ..	2,485,146	..	26,398	16,043	2,527,587	16,534	2,055	..	18,609	1,248,624	1,267,233	32
33	WAIKATO ..	256,215	14,399	3,176	5,078	278,868	19,833	12,303	29,463	61,599	89,477	89,477	33
34	WAIKATO ..	305,728	162,811	12,644	28,801	509,984	..	..	..	..	347,396	347,396	34
35	WAIKATO ..	1,403,325	..	10,927	26,014	1,440,266	..	..	..	..	738,107	738,107	35

(For notes see page 14.)

TABLE VIII (PART I)—FINANCIAL RESULTS OF GENERATION, DISTRIBUTION, AND OPERATION FOR THE YEAR ENDED 31 MARCH 1973—continued

No.	Supply Authorities	Revenue					Cost of Energy					No.	
		Sales of Energy		Trading Account Profit	Other Sources	Total	Operating Costs <sup>1</sup>	Management and General	Capital Charges <sup>2</sup>	Total	Purchased <sup>1</sup>		Total
		Retail	Bulk for Resale <sup>4</sup>										
		\$	\$	\$	\$	\$	\$	\$	\$	\$	\$		
36	POWER BOARDS—continued	10,041,099	4,759,502	481,660	1,770,416	10,117,361	10,087	99,241	235,322	594,304	6,533,298	6,543,385	
37	Waitemata ..	1,154,011	..	10,829	99,346	1,264,186	..	..	..	..	615,672	615,672	
38	Waitemata ..	3,742,556	..	64,100	75,637	3,882,293	4,735	769	..	5,504	2,332,051	2,337,555	
39	Wanganui-Rangitikei ..	1,234,928	4,075	5,588	22,254	1,266,845	34,507	43,217	24,884	102,608	494,317	596,925	
	West Coast ..	119,720,728	..	..	..	126,732,306	259,741	99,241	235,322	594,304	76,427,006	77,021,810	
1	CITY COUNCILS	13,551,610	..	32,016	32,618	13,616,244	313,862	190,344	319,786	823,992	9,434,160	9,434,160	
2	Christchurch ..	7,124,447	..	12,606	192,916	7,329,969	..	..	..	..	3,064,218	3,064,218	
3	Dunedin ..	1,652,620	..	..	1,317	1,653,937	..	..	..	..	872,344	872,344	
4	Hamilton ..	1,954,395	..	12,296	53,501	2,007,896	..	..	..	..	1,233,324	1,233,324	
5	Invercargill ..	879,936	..	..	8,845	901,077	..	..	..	..	474,197	474,197	
6	Nelson ..	984,588	..	..	10,270	994,858	..	..	..	..	563,875	563,875	
7	New Plymouth ..	2,381,602	..	40,143	10,995	2,432,740	73,096	2,500	..	75,596	1,344,576	1,420,172	
8	Palmerston North ..	1,985,495	..	5,062	10,624	2,001,181	1,152	15,675	46,378	117,408	1,332,843	1,333,995	
9	Tauranga ..	442,181	1,529	15,923	29,624	473,334	..	..	..	..	149,996	267,404	
10	Timaru ..	1,239,844	..	..	2,242	1,238,009	..	..	..	..	675,612	675,612	
11	Wellington ..	8,917,102	..	38,547	158,413	9,114,062	..	..	..	..	5,715,390	5,715,390	
12	Whangarei ..	930,936	..	..	530	931,466	..	..	..	..	587,285	587,285	
		42,044,756	1,529	156,593	511,895	42,714,773	443,465	208,519	366,164	1,018,148	25,447,820	26,465,968	
1	BOROUGH COUNCILS	55,466	..	5,047	2,068	62,581	..	..	..	..	91,936	91,936	
2	Bluff ..	61,353	..	3,045	3,109	67,507	..	..	..	..	109,841	109,841	
3	Kaipoi ..	82,040	..	1,292	3,167	86,439	..	..	..	..	107,584	107,584	
4	Lytelton ..	84,828	..	7,728	7,077	92,633	..	..	..	..	42,014	42,014	
5	Rangiora ..	530,226	..	..	5,379	535,605	..	..	..	..	373,474	373,474	
6	Riccarton ..	236,098	12	4,076	948	241,134	11,175	780	18,391	29,566	106,122	135,688	
7	Taumarunui ..	881,106	..	9,005	17,784	898,890	12,771	..	30,197	43,748	421,386	463,134	
8	Taupo ..	162,461	..	..	1,551	173,017	..	..	..	..	120,528	120,528	
9	Te Aroha ..	308,155	..	..	754	309,617	..	..	..	..	200,203	200,203	
10	Thames ..	239,911	..	147	..	240,058	..	..	..	..	162,811	162,811	
	Wairoa ..	..	..	..	..	..	..	..	..	..	..	..	

(For notes see page 14.)

TABLE VIII (PART I)—FINANCIAL RESULTS OF GENERATION, DISTRIBUTION, AND OPERATION FOR THE YEAR ENDED 31 MARCH 1973—continued

No.	Supply Authorities	Revenue					Cost of Energy					No.	
		Sales of Energy		Trading Account Profit	Other Sources	Total	Operating Costs <sup>2</sup>	Generation		Purchased <sup>1</sup>	Total		
		Retail	Bulk for Resale <sup>1</sup>					Management and General	Capital Charges <sup>2</sup>				
11	Borough Councils—continued												
	Whakatane .. .. .	\$ 451,465	\$ ..	\$ 3,695	\$ 455,160	\$ ..	\$ ..	\$ ..	\$ ..	\$ 276,303	\$ 276,303	\$ 276,303	11
		3,393,109	12	45,532	3,462,641	23,946	780	48,588	73,314	2,012,202	2,085,516		
	County Councils												
1	Heathcote .. .. .	352,610	..	3,694	57,081	..	..	..	..	278,578	278,578	278,578	1
2	Kaikoura .. .. .	166,022	..	932	66,954	..	..	..	..	88,751	88,751	88,751	2
		518,632	..	4,626	524,035	..	..	..	..	367,329	367,329	367,329	
	Area Electric Authority												
1	Rotorua .. .. .	2,371,862	1,287	89,983	2,463,132	..	..	..	..	1,519,299	1,519,299	1,519,299	1
		2,371,862	1,287	89,983	2,463,132	..	..	..	..	1,519,299	1,519,299	1,519,299	
	Government Department												
1	Southland <sup>3</sup> .. .. .	..	..	..	..	..	..	..	..	..	..	..	1
		..	..	..	..	..	..	..	..	..	..	..	
	Totals .. .. .	177,896,156	105,540,446	2,940,679	287,040,299	20,203,829	6,339,624	50,532,923	77,076,376	105,801,846	182,878,222	182,878,222	
	Less bulk for resale .. .. .	..	105,540,446	..	105,540,446	..	..	..	..	105,540,446	105,540,446	105,540,446	
	Net revenue and cost .. .. .	177,896,156	..	2,940,679	181,499,853	20,203,829	6,339,624	50,532,923	77,076,376	261,400 <sup>7</sup>	77,337,776	77,337,776	

(For notes see page 14.)

TABLE VIII (PART II)—FINANCIAL RESULTS OF GENERATION, DISTRIBUTION, AND OPERATION FOR THE YEAR ENDED 31 MARCH 1973

No.	Supply Authorities	Cost of Energy Total	Cost of Transmission and Distribution			Total	Total Annual Costs	Net Results—Surplus	Appropriation of Surplus for Capital Works	No.
			Operation and Maintenance*	Management and General	Capital Charges <sup>1</sup>					
1	NEW ZEALAND ELECTRICITY DEPARTMENT <sup>4</sup>	\$ 75,418,800	\$ 7,057,816	\$ 4,455,874	\$ 17,296,467	\$ 28,810,157	\$ 104,228,957	\$ 6,914,455	1	
1	POWER BOARDS									
2	Ashburton ..	755,777	156,042	140,368	164,719	361,129	1,216,906	270,350	194,878	
3	Auckland ..	18,782,818	3,281,062	1,934,441	3,972,813	9,188,316	27,971,134	-377,624	39,428	
3	Bay of Islands ..	913,688	396,689	158,023	467,370	1,022,082	1,935,770	-108,069	192,497	
4	Bay of Plenty ..	1,873,592	322,643	307,376	460,288	1,090,907	2,964,499	44,807	37,448	
4	Buller ..	310,525	91,596	51,874	60,405	203,875	514,400	32,202		
5	Cambridge ..	377,432	55,757	50,913	31,493	138,163	515,595	72,095	79,583	
6	Central Canterbury ..	1,924,532	206,660	553,486	554,531	1,314,677	3,239,209	550,415	429,493	
6	Central Hawke's Bay ..	431,027	78,993	82,352	65,625	226,070	657,097	45,745	53,980	
8	Central Waikato ..	2,568,370	430,519	463,290	606,483	1,500,292	4,068,662	200,129	226,517	
9	Dannevirke ..	392,010	74,096	105,084	86,226	265,406	637,416	52,805	38,091	
10	Egmont ..	906,702	232,431	238,347	88,375	559,153	1,465,855	107,478	102,123	
11	Franklin ..	1,128,945	144,873	214,097	290,790	649,760	1,778,705	81,984	344,847	
12	Golden Bay ..	336,092	50,083	39,459	34,752	124,294	460,386	-1,442		
13	Hawke's Bay ..	3,424,293	508,023	546,796	524,629	1,579,448	5,003,741	247,499	325,990	
14	Horowhenua ..	1,619,688	306,956	379,109	442,948	1,129,013	2,748,701	358,394	346,050	
15	Hutt Valley ..	7,166,226	1,456,132	1,247,825	1,115,537	3,819,494	10,985,720	1,282,950	500,000	
16	King Country ..	708,010	113,175	86,647	158,194	358,016	1,066,026	162,017	45,575	
17	Manawatu-Oroua ..	2,809,087	385,414	284,089	345,360	1,014,863	3,823,950	169,726	124,759	
18	Marlborough ..	812,635	269,984	223,388	343,845	837,217	1,649,852	81,075	50,044	
19	North Auckland ..	2,163,999	353,315	458,774	631,017	1,443,106	3,607,105	158,447	94,384	
20	North Canterbury ..	966,224	278,586	194,634	211,196	684,416	1,650,640	159,295	108,548	
21	Otago ..	996,013	195,024	137,847	311,194	644,065	1,640,078	20,576	52,547	
22	Poverty Bay ..	500,789	131,921	156,612	170,067	458,600	959,389	173,867	179,359	
23	South Canterbury ..	1,307,683	430,114	247,725	422,465	1,100,304	2,407,987	-69,236	23,397	
24	Taranaki ..	1,765,469	252,658	274,830	402,368	929,856	2,695,325	414,238	261,114	
25	Tararua ..	920,350	157,532	171,891	141,766	471,189	1,391,539	196,994	133,894	
26	Tauranga ..	253,158	64,209	68,971	107,597	240,777	493,935	39,126	43,314	
27	Te Awamutu ..	1,516,173	552,557	282,157	509,867	1,344,581	2,860,754	155,388	89,040	
28	Thames Valley ..	571,009	106,228	102,960	83,779	292,367	863,376	54,165	38,404	
29	Waimea ..	4,574,008	777,822	588,467	809,649	2,175,938	6,749,946	248,606	347,991	
30	Waipara ..	1,709,236	301,167	221,416	252,397	774,980	2,484,216	93,059	121,223	
31	Waikato ..	1,267,233	295,410	252,653	498,997	1,047,060	2,314,293	213,294	132,653	
32	Waikare ..	89,477	58,588	25,178	142,717	156,188	232,194	46,674	15,412	
33	Waikare ..	347,396	46,560	61,380	48,248	156,188	503,584	6,400	20,647	
34	Waikare ..	738,107	225,175	1,144,408	301,919	641,502	1,379,609	69,660	53,092	

(For notes see page 14.)

TABLE VIII (PART II)—FINANCIAL RESULTS OF GENERATION, DISTRIBUTION, AND OPERATION FOR THE YEAR ENDED 31 MARCH 1973—continued

No.	Supply Authorities	Cost of Energy Total	Cost of Transmission and Distribution				Total Annual Costs	Net Results—Surplus	Appropriation of Surplus for Capital Works	No.
			Operation and Maintenance <sup>1</sup>	Management and General	Capital Charges <sup>2</sup>	Total				
<b>POWER BOARDS—continued</b>										
36	Waitemata ..	\$ 6,543,385	\$ 1,462,359	\$ 756,080	\$ 1,916,169	\$ 4,134,608	\$ -560,632	\$ ..	36	
37	Waitemata ..	615,672	130,964	127,699	288,146	546,809	101,745	96,798	37	
38	Wanganui-Rangitikei ..	2,337,555	440,712	352,214	532,550	1,333,476	211,262	142,033	38	
39	West Coast ..	596,925	244,215	257,966	161,696	663,877	6,043	341,818	39	
		77,021,310	15,073,294	11,960,826	17,674,471	44,708,591	5,002,447	5,428,971		
<b>CITY COUNCILS</b>										
1	Christchurch ..	9,434,160	1,006,600	1,137,957	2,171,593	4,316,090	-134,005	1,078,781	1	
2	Dunedin ..	3,888,210	1,043,948	921,874	675,814	2,641,636	800,123	184,235	2	
3	Hamilton ..	872,344	122,398	164,047	53,237	339,682	441,911	120,893	3	
4	Invercargill ..	1,233,324	262,503	124,606	130,593	517,702	236,870	34,794	4	
5	Napier ..	474,197	107,551	137,884	187,201	432,636	-5,756		5	
6	Nelson ..	563,875	166,534	89,550	65,411	321,495	109,488	147,208	6	
7	New Plymouth ..	1,420,172	379,985	158,095	168,798	706,818	305,750	248,314	7	
8	Palmerston North ..	1,333,995	105,544	217,872	139,814	463,230	203,958	136,405	8	
9	Tauranga ..	267,404	30,355	23,515	55,213	109,083	96,847	96,800	9	
10	Timaru ..	675,612	139,215	125,563	107,752	372,530	209,867	141,645	10	
11	Wellington ..	5,715,390	1,254,635	727,047	1,009,196	2,990,878	407,794	456,110	11	
12	Whangarei ..	587,285	88,918	60,098	61,262	210,278	133,903	47,629	12	
		26,465,968	4,708,186	3,888,108	4,825,764	13,422,058	2,826,750	2,692,814		
<b>BOROUGH COUNCILS</b>										
1	Bluff ..	91,936	23,529	20,166	12,517	56,212	14,433	10,048	1	
2	Kaipoi ..	109,841	5,372	26,355	6,809	38,536	19,130	28,144	2	
3	Lyttelton ..	107,584	39,766	16,898	4,311	60,975	17,881	1,689	3	
4	Rangiora ..	42,014	14,080	11,442	34,537	102,073	9,440		4	
5	Riccarton ..	373,474	55,728	76,404	45,326	177,458	15,327	7,118	5	

(For notes see page 14.)

TABLE VIII (PART II)—FINANCIAL RESULTS OF GENERATION, DISTRIBUTION, AND OPERATION FOR THE YEAR ENDED 31 MARCH 1973—continued

No.	Supply Authorities	Cost of Energy Total	Cost of Transmission and Distribution			Total Annual Costs	Net Results—Surplus	Appropriation of Surplus for Capital Works	No.
			Operation and Maintenance <sup>1,4</sup>	Management and General	Capital Charges <sup>3</sup>				
	BOROUGH COUNCILS—continued								
6	Taumarunui .. .. .	\$ 135,688	\$ 23,818	\$ 25,039	\$ 9,460	\$ 58,317	\$ 47,129	6	
7	Taupo .. .. .	465,134	84,895	144,656	59,615	389,166	44,590	7	
8	Te Aroha .. .. .	120,528	27,083	11,957	7,679	46,719	4,585	8	
9	Thames .. .. .	200,203	19,881	24,736	12,681	57,298	52,116	9	
10	Wairoa .. .. .	162,811	18,893	23,963	14,168	57,024	20,223	10	
11	Whakatane .. .. .	276,303	22,750	62,240	42,584	127,574	51,283	11	
		2,085,516	335,795	443,856	349,687	1,129,338	255,963		
	COUNTY COUNCILS								
1	Heathcote .. .. .	278,578	14,961	46,259	48,493	109,713	-31,210	1	
2	Kaikoura .. .. .	88,751	29,000	19,315	15,795	64,110	14,093	2	
		367,329	43,961	65,574	64,288	173,823	-17,117		
	AREA ELECTRIC AUTHORITY								
1	Rotorua .. .. .	1,519,299	339,349	294,730	92,651	726,730	270,330	1	
		1,519,299	339,349	294,730	92,651	726,730	270,330		
	GOVERNMENT DEPARTMENT								
1	Southland <sup>5</sup> .. .. .	.. .. .	.. .. .	.. .. .	.. .. .	.. .. .	.. .. .	1	
	Totals .. .. .	182,878,222	27,558,401	21,108,968	40,303,328	88,970,697	15,191,380		
	Less bulk for resale .. .. .	105,540,446	.. .. .	.. .. .	.. .. .	.. .. .	15,252,802		
	Net revenue and cost .. .. .	77,337,776	27,558,401	21,108,968	40,303,328	88,970,697	15,191,380		

<sup>1</sup>For detailed analysis see table IX.  
<sup>2</sup>Purchases from sources other than New Zealand.  
<sup>3</sup>Actual running costs including fuel wages, stores, repairs and maintenance.  
<sup>4</sup>Includes cost of street lighting.  
<sup>5</sup>Transactions between supply authorities adjusted to lower figures where rebate is known.  
<sup>6</sup>Shown separately but included with New Zealand Electricity Department.  
<sup>7</sup>Results for period 1 April 1972-30 June 1972 only.

TABLE IX—ANALYSIS OF CAPITAL CHARGES FOR THE YEAR ENDED 31 MARCH 1973

No.	Supply Authorities	Interest		Sinking Fund and Principal Repayments		Depreciation		Renewals out of Revenue		Total		Grand Total	No.
		Generation	Transmission and Distribution	Generation	Transmission and Distribution	Generation	Transmission and Distribution	Generation	Transmission and Distribution	Generation	Transmission and Distribution		
1	NEW ZEALAND ELECTRICITY DEPARTMENT <sup>1</sup>	\$ 30,314,429	\$ 11,247,011	\$ 6,095,252	\$ 2,261,410	\$ 13,473,168	\$ 3,788,046	\$ ..	\$ ..	\$ 49,882,849	\$ 17,296,467	\$ 67,179,316	1
2	Ashburton	..	30,392	..	62,600	..	511,786	71,727	..	..	164,719	164,719	2
3	Auckland	..	623,509	..	2,837,518 <sup>a</sup>	..	..	..	..	..	3,972,813	3,972,813	3
4	Bay of Islands	..	137,409	..	305,043	..	..	..	..	..	467,370	467,370	4
5	Bay of Plenty	..	94,990	..	168,069 <sup>4</sup>	..	154,068	43,161	..	..	460,288	460,288	5
6	Buller	..	21,183	..	32,066	..	650	6,506	..	..	60,405	60,405	6
7	Cambridge	..	..	..	..	..	740	..	..	..	31,493	31,493	7
8	Central Canterbury	..	156,213	..	302,128	..	..	..	..	..	554,531	554,531	8
9	Central Hawke's Bay	..	15,703	..	29,594	..	..	..	..	..	65,625	65,625	9
10	Central Waikato	..	128,746	..	225,902	..	..	..	..	..	606,483	606,483	10
11	Dannevirke	..	..	..	..	..	..	86,226	..	..	86,226	86,226	11
12	Egmont	..	11,547	..	11,060	..	..	..	..	..	88,375	88,375	12
13	Franklin	..	55,453	..	118,540	..	..	..	..	..	290,790	290,790	13
14	Golden Bay	400	7,841	..	24,114	..	2,797	..	..	400	34,752	35,152	14
15	Hawke's Bay	..	149,078	..	314,168	..	26,667	..	..	..	524,629	524,629	15
16	Horowhenua	..	107,124	..	229,584	..	..	..	..	..	442,948	442,948	16
17	Hutt Valley	..	321,965	..	729,025	..	..	..	..	..	1,115,537	1,115,537	17
18	King Country	43,467	32,482	15,400	75,428	..	..	..	..	58,867	158,194	217,061	18
19	Manawatu-Oroua	..	82,306	..	147,139	..	..	..	..	..	345,360	345,360	19
20	Marlborough	..	96,660	..	140,772	..	..	..	..	..	343,845	343,845	20
21	North Auckland	..	205,196	..	341,253	..	..	..	..	..	631,017	631,017	21
22	North Canterbury	..	77,917	..	67,660	..	..	..	..	..	211,196	211,196	22
23	Otago	..	49,401	..	171,289	..	..	..	..	..	311,194	311,194	23
24	Otago Central	19,528	44,027	33,360	46,272	..	..	13,798	..	66,686	170,067	236,753	24
25	Poverty Bay	..	177,080	..	225,155	..	2,798	..	..	..	422,465	422,465	25
26	South Canterbury	..	120,338	..	157,193	..	..	..	..	..	402,368	402,368	26
27	Taranaki	15,841	34,421	12,962	39,265	..	..	26,219	..	55,022	141,766	196,788	27
28	Tairāia	..	16,552	..	27,300	..	1,000	..	..	..	107,597	107,597	28
29	Tauranga	..	124,846	..	213,066	..	170,566	..	..	..	509,867	509,867	29
30	Te Awamutu	..	6,698	..	35,345	..	3,492	..	..	..	83,779	83,779	30
31	Thames Valley	..	228,232	..	329,205	..	..	..	..	..	809,649	809,649	31
32	Waimea	..	61,179	..	99,366	..	14,078	..	..	..	252,397	252,397	32
33	Wairarapa	..	140,769	..	220,526	..	..	..	..	..	498,997	498,997	33
34	Waikato	15,012	8,703	14,451	20,010	..	..	..	..	29,463	59,001	88,464	34
35	Waikato	..	12,983	..	20,010	..	..	..	..	..	48,248	48,248	35
35	Waitaki	..	63,087	..	137,122	..	..	..	..	..	301,919	301,919	35

(For notes see page 17.)



TABLE IX—ANALYSIS OF CAPITAL CHARGES FOR THE YEAR ENDED 31 MARCH 1973—continued

No.	Supply Authorities	Interest		Sinking Fund and Principal Repayments		Depreciation		Renewals out of Revenue		Total		Grand Total	No.
		Generation	Transmission and Distribution	Generation	Transmission and Distribution	Generation	Transmission and Distribution	Generation	Transmission and Distribution	Generation	Transmission and Distribution		
36	Waitemata	..	449,216	..	1,047,019	..	..	..	419,934	..	1,916,169	\$	36
37	Waitomo	..	85,393	..	161,610	..	..	..	41,143	..	288,146	\$	37
38	Wanganui-Rangitikei	..	151,382	..	267,481	..	47,568	..	66,119	..	532,550	\$	38
39	West Coast	10,686	36,377	14,198	64,548	..	..	..	60,771	24,884	161,696	\$	39
		104,934	4,166,398	90,371	9,458,460	..	936,210	40,017	3,113,403	235,322	17,674,471	\$	
CITY COUNCILS													
1	Christchurch	..	263,818	79,095	525,029	195,000	1,382,686	..	..	319,786	2,171,533	\$	1
2	Dunedin	45,691	129,439	..	157,375	..	389,000	..	..	..	675,814	\$	2
3	Hamilton	..	129	..	7,946	..	..	..	45,162	..	53,237	\$	3
4	Invercargill	..	36,980	..	48,569	..	..	..	45,044	..	130,593	\$	4
5	Napier	..	47,690	..	24,130	..	63,861	..	51,520	..	187,201	\$	5
6	Nelson	..	..	..	..	..	65,411	..	..	..	65,411	\$	6
7	New Plymouth	..	21,151	..	27,508	..	..	..	120,079	..	168,738	\$	7
8	Palmerston North	..	..	4,556	..	..	..	..	139,814	..	139,814	\$	8
9	Tauranga	28,606	261	..	461	..	..	13,216	54,491	46,378	101,591	\$	9
10	Timaru	..	6,822	..	15,320	..	85,610	..	..	..	107,752	\$	10
11	Wellington	..	338,405	..	303,971	..	366,820	..	..	..	1,009,196	\$	11
12	Whangarei	..	59	..	7,200	..	19,732	..	34,271	..	61,262	\$	12
		74,297	844,754	83,651	1,117,509	195,000	2,373,120	13,216	490,381	366,164	4,825,764	\$	
BOROUGH COUNCILS													
1	Bluff	..	121	..	756	..	..	..	11,640	..	12,517	\$	1
2	Kaipoi	..	141	..	254	..	..	..	6,014	..	6,809	\$	2
3	Lyttelton	..	..	..	..	..	4,311	..	..	..	4,311	\$	3
4	Rangiora	..	3,757	..	28,580	..	..	..	2,200	..	34,537	\$	4
5	Riccarton	..	6,555	..	10,335	..	..	..	28,436	..	45,326	\$	5
6	Taumarunui	9,753	70,903	8,638	66,275	..	4,397	..	5,063	18,391	9,460	\$	6
7	Taupo	15,088	..	15,109	..	..	15,285	..	7,152	30,197	159,615	\$	7
8	Tc Aroha	..	..	..	..	..	..	..	7,679	..	7,679	\$	8
9	Thames	..	229	..	1,089	..	..	..	11,363	..	12,681	\$	9
10	Wairoa	..	757	..	538	..	..	..	12,873	..	14,168	\$	10
11	Whakatane	..	6,649	..	12,234	..	..	..	23,701	..	42,584	\$	11
		24,841	89,112	23,747	120,061	..	24,393	..	116,121	48,588	349,687	\$	

(For notes see page 17.)

TABLE IX—ANALYSIS OF CAPITAL CHARGES FOR THE YEAR ENDED 31 MARCH 1973—continued

No.	Supply Authorities	Interest		Sinking Fund and Principal Repayments		Depreciation		Renewals out of Revenue		Total		Grand Total	No.
		Generation	Transmission and Distribution	Generation	Transmission and Distribution	Generation	Transmission and Distribution	Generation	Transmission and Distribution	Generation	Transmission and Distribution		
1	Heathcote	..	1,721	..	27,109	..	..	..	..	..	48,493	48,493	1
2	Kaikoura	..	2,613	..	5,373	..	..	..	..	..	15,795	15,795	2
		..	4,334	..	32,482	..	..	..	..	..	64,288	64,288	
1	AREA ELECTRIC AUTHORITY	..	..	..	..	..	92,651	..	..	..	92,651	92,651	1
	Rotorua	..	..	..	..	..	92,651	..	..	..	92,651	92,651	
	GOVERNMENT DEPARTMENT	..	..	..	..	..	..	..	..	..	..	..	
1	Southland*	..	..	..	..	..	..	..	..	..	..	..	1
	GRAND TOTALS	30,518,501	16,351,609	6,293,021	12,989,922	13,668,168	7,214,420	53,233	3,747,377	50,532,923	40,303,328	90,836,251	

\*Shown separately but included with New Zealand Electricity Department.

†Includes Southland Electric Power Supply, funding of \$34,397.

‡Includes provision for general capital expenditure of \$1,000,000.

§Includes loan equating

TABLE X (PART I)—ANALYSIS OF LIABILITIES AND RESERVES FOR THE YEAR ENDED 31 MARCH 1973

No.	Supply Authorities	Liabilities						Reserves						Net Appropriation Account Surplus*	Total	No.
		Public Debt			Sundry Creditors	Loans Repaid Reserve <sup>1</sup>	Capital Expenditure from Revenue	Sinking Fund Reserve for Future Loan Repayment	Depreciation Reserve	Renewal Fund Reserve	General and Other Reserves <sup>2</sup>					
		Loans Raised During Year	Loans Repaid During Year									Gross Loan Liability as at 31 March 1973				
			From Renewal Loans	From Revenue and Sinking Fund	From Revenue											
1	NEW ZEALAND ELECTRICITY DEPARTMENT*	\$ 88,890,921	\$ 11,992,667	\$ 877,182,214	\$ 8,148,269	\$ ..	\$ ..	\$ 175,129,706	\$ ..	\$ 185,638,675	\$ ..	\$ 1,246,098,864	1			
POWER BOARDS																
1	Ashburton	120,000	62,600	573,000	229,587	2,290,856	1,622,037	45,959	94,069	7,000	537,039	5,400,347	1			
2	Auckland	254,020	1,837,518	11,578,459	3,904,450	28,051,271	10,572,198	6,049,028	210,794	2,623,172	90,116	64,700,297	2			
3	Bay of Islands	535,500	301,597	2,770,728	209,968	3,145,679	820,603	30,510	..	1,569	70,119	7,000,297	3			
4	Bay of Plenty	248,000	132,364	1,824,461	524,551	1,488,349	2,305,618	138,669	..	93,949	410,298	6,303,671	4			
5	Buller	45,000	31,961	412,226	108,954	290,971	555,308	44,254	..	3,714	117,358	1,604,001	5			
6	Cambridge	..	..	..	109,350	225,338	810,757	38,975	..	67,826	93,116	1,306,987	6			
7	Central Canterbury	360,400	299,070	2,068,630	625,110	2,573,705	3,125,618	59,503	..	125,868	6,241	10,394,358	7			
8	Central Hawke's Bay	..	29,594	1,111,693	111,693	1,009,305	773,700	39,503	..	96,292	923,253	10,394,358	8			
9	Central Waikato	428,970	225,902	2,412,746	844,740	4,426,977	2,858,582	216,215	24,788	138,514	639,690	1,445,452	9			
10	Dannevirke	..	..	..	92,214	635,237	1,098,221	79,473	..	39,300	111,197	2,049,242	10			
11	Egmont	300,000	3,126	433,854	248,732	918,646	2,415,906	180,000	..	7,501	165,309	4,406,886	11			
12	Franklin	339,250	118,540	1,293,130	287,959	2,427,057	2,014,397	96,371	..	66,292	363,595	6,356,924	12			
13	Golden Bay	..	24,115	1,132,991	97,906	428,609	359,113	14,369	..	2,110	45,692	1,607,729	13			
14	Hawke's Bay	621,200	266,568	2,017,716	1,150,230	4,810,876	2,933,653	71,665	..	225,653	875,332	12,524,775	14			
15	Horowhenua	585,700	253,629	2,122,795	557,418	2,702,061	2,150,493	161,778	..	210,308	252,655	8,741,517	15			
16	Hutt Valley	779,190	713,741	5,996,899	2,478,622	6,830,664	7,471,953	360,026	..	500,281	1,036,150	24,778,300	16			
17	King Country	..	82,928	1,377,699	292,453	1,336,414	1,600,086	167,473	..	36,310	1,200,288	3,930,373	17			
18	Manawatu-Oroua	148,200	121,525	1,451,167	746,349	1,912,941	2,911,169	484,102	..	580,444	1,200,288	5,930,809	18			
19	Marborough	360,670	136,890	1,750,223	309,084	1,950,071	1,556,819	97,116	..	150,513	166,310	3,869,353	19			
20	North Auckland	561,560	424,473	3,007,456	713,454	5,030,766	2,329,030	44,947	2,698	280,410	415,024	12,685,697	20			
21	North Canterbury	225,000	9,248	1,611,175	302,545	1,035,843	1,474,584	34,016	..	79,012	364,959	5,118,911	21			
22	Otago	170,000	169,699	921,225	306,938	2,750,168	1,731,845	315,393	..	89,860	576,671	5,703,752	22			
23	Otago Central	165,500	67,571	1,243,808	171,861	1,191,609	2,213,490	161,151	..	117,387	376,671	1,349,824	23			
24	Povey Bay	..	136,300	3,311,012	471,352	3,511,707	656,587	73,489	..	140,561	467,663	8,593,735	24			
25	South Canterbury	415,000	66,911	2,302,999	653,939	2,578,149	2,123,210	36,771	..	227,051	562,524	5,204,161	25			
26	Taranaki	..	46,999	841,311	250,431	2,036,818	1,571,829	175,047	..	443,030	180,569	5,504,261	26			
27	Tararua	16,400	19,045	297,753	26,206	736,617	602,296	40,332	..	15,000	1,349,824	1,349,824	27			
28	Tauranga	1,285,600	111,080	4,939,479	1,131,476	3,055,804	2,178,829	580,045	..	92,942	307,816	11,540,830	28			
29	Te Awamutu	..	..	106,805	153,157	1,241,631	952,016	18,089	..	..	..	1,396,249	29			
30	Thames Valley	775,000	306,285	4,342,159	1,460,565	1,045,340	1,142,643	141,004	..	3,265,164	801,869	15,425,611	30			
31	Waimea	109,450	99,366	1,144,163	347,720	968,759	2,438,562	122,606	..	911,510	266,205	6,189,695	31			
32	Wairarapa	600,000	295,512	2,657,177	354,207	2,103,331	1,671,438	3,021	..	19,509	228,880	7,073,670	32			
33	Waikare	..	47,829	464,167	29,633	1,153,899	1,153,899	7,574	..	3,270	1,349,824	1,349,824	33			
34	Waikato	29,500	20,010	214,931	110,413	460,233	360,414	..	..	5,624	66,924	1,236,938	34			
35	Waikani	60,000	33,250	1,130,646	252,145	1,667,634	962,317	364,094	..	363,061	290,969	5,472,768	35			
36	Waitemata	..	591,969	8,666,339	2,319,645	8,065,345	3,523,718	..	..	324,550	187,564	24,044,010	36			
37	Waikato	263,000	..	1,538,661	245,800	1,454,738	1,098,787	94,594	..	13,700	7,393	4,746,851	37			
38	Waikato-Rangitikei	342,580	260,043	2,933,788	3,587,180	2,470,196	2,470,196	282,311	..	193,595	705,273	11,051,479	38			
39	West Coast	224,400	9,788	1,069,967	547,305	1,004,542	1,934,182	178,913	..	1,244	10,675	4,649,266	39			
		15,900,810	824,669	84,071,693	23,425,297	112,579,373	81,145,046	11,955,550	990,144	11,436,360	19,596,155	944,784,188				

(For notes see page 21.)

TABLE X (PART I)—ANALYSIS OF LIABILITIES AND RESERVES FOR THE YEAR ENDED 31 MARCH 1973—continued

No.	Supply Authorities	Liabilities				Reserves										Total	No.
		Loans Raised During Year		Loans Repaid During Year		Gross Loan Liability as at 31 March 1973	Sundry Creditors	Loans Repaid Reserve	Capital Expenditure from Revenue	Sinking Fund Reserve for Future Loan Repayment	Depreciation Reserve	Renewal Fund Reserve	General and Other Reserves*	Net Appropriation Account Surplus†			
		\$	\$	\$	\$												
1	Christchurch	920,000	564,145	5,023,205	2,474,615	6,401,732	10,523,720	1,354,954	15,066,110	3,861,206	3,024,515	3,861,206	911,887	34,981,830	1		
2	Dunedin	310,700	597,847	2,960,027	1,021,190	8,650,715	2,611,051	1,493,579	30,293	2,926,939	..	2,926,939	2,083,249	32,182,589	2		
3	Hamilton	..	7,946	..	305,655	217,492	2,312,614	43,889	23,379	..	..	..	107,592	3,476,430	3		
4	Invercargill	123,864	..	709,752	393,600	485,151	894,223	79,079	..	232,116	..	232,116	107,592	3,962,677	4		
5	Napier	94,500	..	887,960	146,489	..	..	..	..	..	..	..	62,681	2,302,748	5		
6	Nelson	..	..	..	113,508	..	..	..	159,133	1,623,201	..	1,623,201	..	1,895,842	6		
7	New Plymouth	356,300	24,488	646,412	128,024	596,668	3,110,312	13,506	3,623	1,951,619	4,866	1,951,619	472,617	3,079,647	7		
8	Palmerston North	..	..	..	342,002	..	..	..	..	..	..	..	278,876	3,597,916	8		
9	Tauranga	554,800	..	2,618,707	238,346	307,671	1,250,990	10,306	251,580	..	5,160	..	38,227	4,725,657	9		
10	Timaru	..	15,320	112,956	119,800	358,057	1,580,694	..	29,015	..	..	..	128,751	2,314,353	10		
11	Wellington	453,967	173,227	6,211,605	1,951,796	1,948,374	9,705,226	994,149	113,292	988,986	1,720,308	988,986	98,777	23,007,503	11		
12	Whangarei	..	7,200	..	170,735	170,058	715,775	..	35,147	90,625	..	90,625	86,340	1,268,680	12		
		2,814,131	1,416,050	19,190,664	7,095,781	19,085,916	35,708,031	4,050,675	16,504,400	9,769,532	5,554,929	4,248,947	4,248,947	121,208,065			
	<b>Borough Councils</b>																
1	Bluff	..	757	2,457	11,906	31,133	193,506	..	6,084	..	..	..	42,528	287,614	1		
2	Kaipoi	..	5,234	..	31,052	18,000	33,398	..	2,332	193,001	..	193,001	47,320	325,903	2		
3	Lyttelton	..	..	..	32,330	16,465	218,433	..	37,322	..	..	..	54,376	356,926	3		
4	Rangiora	..	..	..	..	..	..	..	..	..	..	..	..	..	4		
5	Riccarton	..	..	116,000	95,100	90,400	391,004	70,548	48,804	..	..	..	..	811,064	5		
6	Taurarunui	..	8,638	163,583	29,212	148,557	343,155	9,351	9,351	410	..	410	8,328	702,596	6		
7	Taupo	125,160	43,509	1,413,908	249,686	705,252	631,647	110,561	78,757	..	..	..	121,377	3,304,100	7		
8	T.E. Arona	..	..	..	34,638	21,161	181,714	..	98,742	..	..	..	..	3,364,453	8		
9	T. James	..	1,158	..	54,346	24,301	225,609	2,246	33,915	5,930	..	5,930	14,768	564,037	9		
10	Waioira	20,000	1,538	19,642	40,144	24,538	272,329	..	5,012	3,918	..	3,918	7,911	347,314	10		
11	Whakatane	..	7,396	97,674	73,345	174,961	539,449	31,213	32,158	..	71,884	..	37,202	1,056,906	11		
		145,160	67,250	1,820,701	653,077	1,230,792	3,026,244	214,568	270,478	202,359	71,884	202,359	332,410	7,822,513			
	<b>County Councils</b>																
1	Hendricote	78,000	9,109	96,085	75,523	82,005	205,544	22,310	4,075	..	..	..	46,240	553,242	1		
2	Kaikoura	..	3,119	28,994	26,994	233,308	89,553	..	3,558	..	..	..	..	445,037	2		
		78,000	12,228	125,089	102,517	315,393	379,097	22,310	7,633	..	..	..	46,240	998,279			
	<b>Area Electric Authority</b>																
1	Rotorna	88,806	..	1,990,663	4,670	..	1,263,850	..	92,651	..	..	..	..	3,351,842	1		
		88,806	..	1,990,663	4,670	..	1,263,850	..	92,651	..	..	..	..	3,351,842			
	<b>Government Department</b>																
1	Southland	..	..	..	..	..	..	..	..	..	..	..	..	..	1		
	<b>GRAND TOTALS</b>	107,917,828	1,054,440	904,381,014	39,429,611	133,211,474	121,522,276	10,572,133	203,860,418	207,046,916	6,016,957	18,223,752	18,223,752	1,724,264,551			

(For notes see page 21.)

TABLE X (PART II)—ANALYSIS OF ASSETS FOR THE YEAR ENDED 31 MARCH 1973

No.	Supply Authorities	Total	Assets						Annual Increase in Total Capital Expenditure*	No.
			Sundry Debtors	Revenue and Reserve Funds—Cash and Investments	Loan Account—Cash and Investments	Stocks and Materials†	Total Capital Expenditure*	Net Appropriation Account Deficit‡		
		\$	\$	\$	\$	\$	\$	\$	(	
1	New Zealand Electricity Department <sup>4</sup>	1,246,038,864	23,443,762	1,089,510*	..	14,401,082	1,207,004,510	111,572,135	1	
2	Power Boards									
1	Ashburton ..	5,400,347	194,562	909,495	..	410,398	4,485,892	275,156	2	
2	Auckland ..	64,700,297	2,252,327	5,614,690	458,460	1,689,702	54,685,109	4,274,948	3	
3	Bay of Islands ..	7,049,467	283,197	38,494	294,586	389,502	6,254,954	313,327	4	
4	Bay of Plenty ..	6,985,671	528,968	485,042	..	115,969	5,571,359	438,733	5	
5	Buller ..	1,604,001	103,733	122,441	30,419	..	1,231,459	58,990	6	
6	Cambridge ..	1,306,387	27,991	104,750	..	57,551	1,036,085	79,583	7	
7	Central Canterbury ..	10,594,258	633,447	892,111	223,299	439,734	8,453,667	555,795	8	
8	Central Hawke's Bay ..	2,445,432	131,675	110,609	74,898	78,458	2,124,690	51,981	9	
9	Central Waikato ..	11,562,452	685,362	657,363	..	541,281	9,623,407	696,357	10	
10	Dannevirke ..	2,049,242	60,306	139,322	..	116,155	1,733,459	38,091	11	
11	Edmonton ..	4,406,886	161,685	262,932	171,864	211,598	3,598,806	232,523	12	
12	Franklin ..	6,556,024	208,150	447,504	305,164	255,792	5,359,414	455,646	13	
13	Golden Bay ..	1,077,730	125,018	77,397	7,711	54,256	873,247	2,796	14	
14	Hawke's Bay ..	12,924,775	987,481	875,523	100	577,680	10,483,591	747,906	15	
15	Horowhenua ..	8,741,517	399,730	673,140	211,685	326,298	7,150,664	830,504	16	
16	Hutt Valley ..	24,773,300	2,256,043	1,092,433	..	1,251,204	20,263,540	1,706,950	17	
17	King Country ..	5,950,573	192,474	1,396,707	53,207	80,354	4,297,831	28,362	18	
18	Manawatu-Oroua ..	8,890,609	835,526	1,115,716	29,986	333,338	6,574,045	352,036	19	
19	Marlborough ..	5,969,533	111,239	1,184,746	416,045	266,592	5,069,911	353,484	20	
20	North Auckland ..	12,605,697	597,391	861,626	75,574	251,400	10,090,306	559,619	21	
21	North Canterbury ..	5,118,211	397,959	267,452	..	252,185	4,200,615	780,548	22	
22	North Canterbury ..	6,703,752	304,482	604,893	60,657	372,147	5,357,473	201,296	23	
23	Ohio Central ..	5,569,121	342,951	366,808	104,890	332,225	4,422,447	346,071	24	
24	Poverty Bay ..	8,593,735	307,859	494,419	195,680	427,232	7,178,376	315,159	25	
25	South Canterbury ..	9,204,161	746,147	590,589	220,000	596,483	7,062,942	547,587	26	
26	Taranaki ..	5,504,261	107,902	724,967	..	195,852	4,476,240	137,419	27	
27	Taranaki ..	1,949,824	471,173	151,678	..	114,906	1,636,657	2,702,154	28	
28	Tairāra ..	11,440,830	459,570	962,895	225,114	232,422	9,660,829	1,894,928	29	
29	Tairāra ..	2,596,249	135,433	62,053	..	65,311	2,300,452	1,161,596	30	
30	Te Awamutu ..	15,425,611	1,138,311	1,602,928	..	1,052,864	11,631,508	1,256,809	31	
31	Thames Valley ..	6,189,695	305,659	500,432	21,058	293,195	5,069,351	241,376	32	
32	Waikato ..	7,873,670	108,382	715,465	..	475,437	6,374,386	812,088	33	
33	Waikato ..	1,517,867	49,026	71,197	..	55,826	1,342,838	15,412	34	
34	Waikato ..	1,238,639	108,426	71,007	2,977	64,589	1,053,640	28,670	35	
35	Waikato ..	5,472,768	281,820	786,395	441,164	226,834	3,736,555	143,211	36	
36	Waitemata ..	24,044,010	1,112,001	1,012,943	197,322	716,522	21,005,222	1,606,835	37	
37	Waitemata ..	4,746,851	214,724	330,265	..	167,877	4,025,563	205,792	38	
38	Wanganui-Rangitikei ..	11,051,479	528,248	313,562	156,523	594,281	8,858,733	408,466	39	
39	West Coast ..	4,849,256	161,064	368,832	21,796	312,670	3,906,694	633,985		
		344,784,188	17,613,412	25,648,762	4,009,179	14,177,326	289,335,509	24,486,697		

(For notes see page 21.)

TABLE X (PART II)—ANALYSIS OF ASSETS FOR THE YEAR ENDED 31 MARCH 1973—continued

Assets

	City Councils	Debtors	Balance Cash and Investments	Cash and Investments	Materials*	Capital Expenditure*	Account Deficit*	Capital Expenditure*
1	Christchurch	\$ 1,350,999	\$ 1,791,949	\$ 518,283	\$ 752,603	\$ 29,365,060	\$ 1,202,936	\$ 1,784,716
2	Dunedin	748,150	5,681,238	78,127	1,124,910	24,550,164	..	1,452,126
3	Hamilton	92,621	2,100,515	..	56,431	2,839,453	..	186,005
4	Invercargill	240,738	67,268	..	166,808	3,494,089	..	207,431
5	Napier	106,246	1,303	79,079	101,821	2,014,299	..	187,082
6	Nelson	134,463	95,678	..	26,709	1,623,201	15,791	147,207
7	New Plymouth	192,345	24,741	290,114	397,985	4,174,462	..	431,796
8	Palmerston North	210,916	316,292	..	146,203	2,914,508	..	88,105
9	Tauranga	38,288	305,757	..	62,332	4,319,200	..	1,267,665
10	Timaru	109,123	22,241	..	131,242	2,042,868	..	143,192
11	Wellington	1,176,381	9,708,124	261,200	817,793	17,844,005	..	911,467
12	Whangarei	1,89,150	215,702	..	77,995	17,805,833	..	47,629
	<b>Borough Councils</b>	<b>4,489,420</b>	<b>14,330,808</b>	<b>1,249,456</b>	<b>3,863,232</b>	<b>96,057,222</b>	<b>1,218,727</b>	<b>6,854,361</b>
1	Bluff	26,800	6,416	..	27,302	227,096	..	4,502
2	Kaipua	40,380	6,693	..	34,431	244,399	..	28,144
3	Lytelton	23,181	92,684	..	6,164	234,898	..	1,689
4	Rangiora	70,013	134,236	..	..	597,404	71	..
5	Riccarton	23,026	19,493	..	..	655,295	..	15,292
6	Taumarunui	137,461	101,319	52,783	4,782	2,774,083	..	39,308
7	Taupo	3,304,100	26,742	..	158,454	2,028,875	2,043	29,311
8	Te Aroha	264,453	45,193	..	22,525	254,531	..	18,833
9	Thames	364,837	6,358	45,111	33,059	282,826	..	20,761
10	Wairua	5,509	174,400	..	49,400	809,110	..	86,640
11	Whakatane	23,995	683,534	97,894	363,687	6,282,517	2,114	309,988
	<b>County Councils</b>	<b>33,098</b>	<b>46,900</b>	<b>..</b>	<b>21,000</b>	<b>453,038</b>	<b>46,106</b>	<b>69,082</b>
1	Hastings	36,488	46,900	..	13,715	345,934	..	95,105
2	Kaikoura	71,586	46,900	..	34,715	798,972	46,106	164,191
	<b>Area Electric Authority</b>	<b>112,303</b>	<b>54,055</b>	<b>..</b>	<b>248,020</b>	<b>2,871,657</b>	<b>65,807</b>	<b>1,278,351</b>
1	Rotorua	112,303	54,055	..	248,020	2,871,657	65,807	1,278,351
	<b>Government Department</b>	<b>..</b>	<b>..</b>	<b>..</b>	<b>..</b>	<b>..</b>	<b>..</b>	<b>..</b>
1	Southland <sup>1</sup>	..	..	..	..	..	..	..
	<b>GRAND TOTALS</b>	<b>1,724,264,551</b>	<b>41,853,569</b>	<b>5,356,529</b>	<b>33,168,062</b>	<b>1,596,430,387</b>	<b>1,332,754</b>	<b>144,665,723</b>

Notes—<sup>1</sup>Includes capital reserves, included with New Zealand Electricity Department. <sup>2</sup>Includes special contributions by consumers. <sup>3</sup>Includes special maintenance suspense account, \$880,296. <sup>4</sup>Includes Southland Electric Power Supply. <sup>5</sup>Shown separately but included with New Zealand Electricity Department.



TABLE XI (PART I)—ANALYSIS OF CONSUMPTION OF ENERGY FOR THE YEAR ENDED 31 MARCH 1973

No.	Supply Authorities	Group 1—Domestic				Group 2—Commercial				Group 4—Farming				No.				
		Units Consumed	Revenue	Revenue Per Unit Sold	Consumers	Average Units Per Consumer	Units Consumed	Revenue	Revenue Per Unit Sold	Consumers	Average Units Per Consumer	Units Consumed	Revenue		Revenue Per Unit Sold	Consumers	Average Units Per Consumer	
		kWh	\$	c	Number	kWh	\$	c	Number	kWh	\$	c	Number	kWh	\$	c	Number	kWh
	NEW ZEALAND ELECTRICITY DEPARTMENT <sup>1</sup>	155,629,601	2,176,090	1.398	21,081	7,113	41,864,406	1.806	3,037	13,785	4,963,920	1.981	2,387	2,080				
1	Power Boards	76,795,070	875,213	1.140	8,764	8,763	12,752,759	2.007	1,137	11,216	44,810	2.100	1,487	1,435				
2	Ashburton	1,074,996,869	10,935,501	1.020	149,944	7,169	495,895,927	8,453,063	25,039	22,501	26,008	2.104	1,073	6,370				
3	Auckland	69,711,530	835,940	1.199	8,847	7,079	17,443,920	371,242	1,695	10,291	11,216,150	2.013	1,073	5,836				
4	Bay of Islands	69,607,300	937,156	1.346	6,651	8,046	15,183,841	347,354	1,260	12,051	17,743,668	1.921	2,148	8,664				
5	Bay of Plenty	11,912,315	156,568	1.314	2,666	4,468	4,757,005	139,023	512	9,291	15,915	1.566	1,137	7,326				
6	Buller	27,994,523	313,887	1.121	3,356	8,942	4,715,521	99,960	485	9,723	77,867	1.680	702	6,602				
7	Cambridge	108,767,701	1,326,629	1.220	12,860	8,458	45,152,244	816,500	1,808	29,803	290,004	1.669	2,148	8,090				
8	Central Canterbury	42,257,320	444,339	1.059	14,529	9,330	6,721,705	141,913	621	10,824	1,783,922	2.912	2,944	1,890				
9	Central Hawke's Bay	189,214,127	2,151,783	1.137	23,005	7,332	43,663,710	806,754	1,984	22,008	24,766,414	1.751	3,343	7,408				
10	Central Waikato	55,997,202	409,738	1.138	4,019	8,957	6,335,248	154,464	1,608	10,420	3,519,729	2.107	3,972	3,621				
11	Dannevirke	69,123,706	650,544	0.941	7,826	8,833	10,388,537	248,273	1,309	8,089	18,302,190	1.780	2,252	8,127				
12	Egmont	85,236,817	980,592	1.151	11,076	7,696	18,147,358	360,687	1,417	12,807	22,392,631	1.601	3,235	6,922				
13	Franklin	8,383,350	93,023	1.107	3,307	6,044	8,843,869	24,227	1,170	4,964	1,793,890	1.554	6,609	2,880				
14	Golden Bay	232,971,060	2,509,045	1.077	19,438	8,494	39,987,780	853,545	2,257	14,450	6,373,620	2.231	1,780	3,616				
15	Hawke's Bay	132,414,666	1,695,476	1.280	19,377	6,084	32,613,695	835,443	2,562	14,450	4,712,100	2.231	1,780	3,616				
16	Horowhenua	524,830,774	6,025,299	1.148	55,740	9,416	11,878,171	2,408,737	5,570	20,086	16,868	1.216	231	6,005				
17	Hutt Valley	41,201,586	389,085	0.942	7,748	7,748	14,921,305	221,593	1,483	18,241	31,427	2.202	823	1,734				
18	King Country	97,975,607	1,033,037	1.075	15,093	8,149	34,614,897	632,651	1,212	28,560	10,284,403	1.987	2,874	3,578				
19	Manawatu-Oroua	74,395,061	883,741	1.188	12,154	8,154	22,704,626	540,550	1,544	14,705	26,725	2.053	809	2,889				
20	Marlborough	98,756,976	1,317,090	1.334	14,943	6,609	15,203,140	378,635	1,645	9,242	24,162,785	1.717	3,243	7,451				
21	North Auckland	69,719,565	972,212	1.384	9,123	10,998	10,998,463	219,905	1,176	8,587	164,007	2.164	3,939	3,939				
22	North Canterbury	76,377,852	832,145	1.090	9,568	7,983	20,727,172	387,608	1,548	13,390	4,286,390	0.967	1,988	1,988				
23	Otago	57,539,425	644,182	1.120	6,457	6,911	27,810,313	409,708	1,270	21,898	2,100,257	1.206	1,504	1,150				
24	Otago Central	102,611,743	1,180,649	1.158	14,663	7,012	22,499,125	635,078	3,755	5,952	7,379,887	5.958	1,724	4,428				
25	Poverty Bay	102,613,677	1,348,984	1.312	12,917	7,960	13,747,017	420,731	963	14,275	2,200,230	3.427	630	3,492				
26	South Canterbury	73,913,492	688,280	0.931	8,490	8,778	11,628,502	208,812	1,279	9,092	16,949,839	1.500	2,380	7,122				
27	Taranaki	22,716,990	312,606	1.376	3,011	7,545	2,774,035	67,025	472	5,877	3,286,940	2.377	3,977	3,320				
28	Tairāra	128,830,950	1,693,211	1.314	17,784	7,244	19,535,970	487,722	1,676	11,656	13,148,540	2.209	1,835	7,165				
29	Tairāra	48,539,354	477,623	0.984	5,744	8,450	11,370,394	191,374	811	14,020	12,326,595	1.382	1,721	7,162				
30	Tairāra	178,337,629	2,187,948	1.227	26,273	6,766	42,901,190	848,116	3,889	10,851	46,899,613	1.692	4,459	10,516				
31	Thames Valley	104,773,954	1,027,866	0.981	14,091	7,436	14,036,999	354,446	1,176	12,694	18,875	1.965	1,748	4,335				
32	Waikato	101,504,070	1,399,643	1.379	11,807	8,597	21,791,500	530,207	1,720	12,694	7,577,070	2.478	1,612	4,385				
33	Waikato	9,551,670	189,383	1.909	1,206	6,964	1,136,665	29,950	195	5,829	679,025	4.539	4,539	1,509				
34	Waikato	11,915,208	142,566	1.197	1,711	6,964	1,743,191	32,647	232	7,557	674,990	3.332	695	971				
35	Waikato	61,227,651	731,955	1.195	7,370	8,299	15,186,030	358,249	931	16,322	2,006,576	1.804	900	2,230				
36	Waitemata	509,199,114	6,105,764	1.189	74,962	6,793	121,512,708	2,650,775	7,478	16,249	14,230,600	2.035	2,717	5,238				
37	Waitemata	44,575,360	527,906	1.184	5,403	8,250	10,012,707	217,550	1,175	10,269	7,622,050	2.079	1,425	5,349				
38	Wairarapa	174,400,539	1,854,732	1.063	21,403	8,148	52,576,114	1,065,320	3,213	16,364	5,336,900	2.635	2,311	2,309				
39	Wairarapa	41,487,606	528,233	1.273	7,674	5,269	13,883,794	366,419	1,832	16,364	1,901,580	2.168	2,237	8,024				
40	West Coast	4,992,776,429	56,083,024	1.139	654,565	7,628	1,309,156,710	27,512,348	85,199	16,305	341,083,628	1.864	61,735	5,523				

(For notes see page 25)

ANALYSIS OF ENERGY CONSUMPTION FOR THE YEAR ENDED 31 MARCH 1973

No.	Supply Authorities	Group 1—Domestic						Group 2—Commercial						Group 4—Farming					
		Units Consumed	Revenue	Revenue Per Unit Sold	Consumers	Average Units Per Consumer	Units Consumed	Revenue	Revenue Per Unit Sold	Consumers	Average Units Per Consumer	Units Consumed	Revenue	Revenue Per Unit Sold	Consumers	Average Units Per Consumer			
1	Christchurch	692,268,918	7,114,798	1,028	77,615	8,919	180,356,318	4,038,453	2,250	7,693	22,650	4,073,988	73,615	1,807	138	29,592			
2	Dunedin	372,027,244	3,481,736	0,936	37,751	9,855	108,746,213	2,249,923	2,069	4,960	21,925	3,403,364	60,373	1,774	556	6,121			
3	Hamilton	48,498,400	5,545,760	1,145	6,152	5,949	37,377,073	888,246	2,376	2,499	14,957	..	..	..	..	..			
4	Invercargill	97,178,209	1,006,538	1,036	7,794	7,794	41,689,502	765,205	1,835	1,738	23,907	20,576	346	1,682	3	6,069			
5	Napier	28,959,732	393,246	1,131	4,330	6,688	20,085,375	494,974	2,116	1,193	16,836	128,380	2,134	1,682	1	128,380			
6	Nelson	42,542,427	398,278	0,936	5,285	8,050	19,058,603	457,263	2,399	1,049	18,168	112,879	4,196	3,717	67	1,695			
7	New Plymouth	111,191,681	1,076,510	0,968	12,472	7,709	33,245,195	556,582	2,308	1,772	13,118	10,762,644	171,414	1,590	997	10,815			
8	Palmerston North	109,754,846	1,052,014	0,959	13,646	7,927	33,112,630	793,980	2,217	2,339	14,157	260,030	4,131	1,588	12	21,674			
9	Tauranga	16,464,200	1,115,917	0,704	2,177	8,363	14,351,835	260,939	1,818	1,050	13,034	..	..	..	..	..			
10	Timaru	58,760,809	641,636	1,131	6,917	8,661	20,612,302	429,319	2,083	1,340	15,382	..	..	..	..	..			
11	Wellington	353,565,830	3,393,840	0,960	43,410	9,145	206,546,275	4,703,550	2,277	9,929	20,802	38,240	1,104	3,096	23	1,663			
12	Whangarei	37,093,463	358,731	0,967	5,226	7,090	17,548,019	466,272	2,657	1,320	13,294	..	..	..	..	..			
		1,965,305,849	19,520,226	0,993	231,600	8,486	722,790,340	159,974,690	2,210	37,062	19,501	10,820,161	317,993	1,687	1,797	10,473			
1	Bluff	4,952,037	69,540	1,404	897	5,521	4,029,737	84,518	2,097	225	17,910	..	..	..	..	..			
2	Kaipoi	9,253,660	105,200	1,136	1,189	7,916	1,873,660	31,319	1,671	127	14,753	..	..	..	..	..			
3	Lyttelton	7,792,395	81,204	1,043	1,067	7,304	3,206,644	50,018	1,560	192	16,701	..	..	..	..	..			
4	Rangiora	23,132,122	196,698	0,850	2,725	8,489	8,731,505	201,256	2,305	427	20,448	..	..	..	..	..			
5	Taumarunui	9,586,953	92,298	0,963	1,956	7,633	5,962,017	122,467	2,054	316	18,867	7,332	213	2,905	13	564			
6	Taupo	35,146,749	391,500	1,114	4,909	7,160	15,137,609	274,821	1,815	817	18,528	1,028,427	28,657	2,806	304	3,303			
7	Te Aroha	17,173,496	167,209	1,223	1,090	6,587	2,655,560	51,189	1,928	280	9,484	25,020	304	1,595	7	3,374			
8	Thames	13,493,811	160,461	1,195	1,978	6,709	4,223,990	89,201	1,970	383	11,029	..	..	..	..	..			
9	Waikato	12,344,990	145,319	1,177	1,574	7,643	4,211,146	76,175	1,809	262	16,073	..	..	..	..	..			
10	Whakatane	20,344,140	229,458	1,128	2,549	7,981	7,530,293	186,288	2,474	571	13,188	..	..	..	..	..			
11	Whakatane	143,162,953	1,559,725	1,090	19,214	7,451	57,565,241	1,161,272	2,017	3,600	15,990	1,060,779	29,454	2,777	324	3,274			
1	Headcote	19,191,650	187,193	0,975	1,867	10,279	5,521,100	84,026	1,579	96	55,428	368,550	4,408	1,196	40	9,214			
2	Kaikoura	6,172,387	94,253	1,527	976	6,324	2,042,900	42,100	2,061	218	9,971	904,123	16,210	1,793	118	7,662			
		25,346,047	281,446	1,110	2,943	9,017	7,364,000	126,126	1,713	314	23,452	1,272,673	20,619	1,620	158	8,055			
1	AREA ELECTRIC AUTHORITY	106,671,870	1,089,986	1,016	14,697	7,258	39,821,040	858,582	2,156	1,891	21,058	6,468,000	158,783	2,455	1,029	6,285			
	Rotorua	106,671,870	1,089,986	1,016	14,697	7,258	39,821,040	858,582	2,156	1,891	21,058	6,468,000	158,783	2,455	1,029	6,285			
1	GOVERNMENT DEPARTMENT	196,508,021	2,105,492	1,542	20,224	6,750	35,811,195	688,334	1,922	2,981	12,013	4,963,928	98,333	1,981	2,387	2,080			
	Southland	196,508,021	2,105,492	1,542	20,224	6,750	35,811,195	688,334	1,922	2,981	12,013	4,963,928	98,333	1,981	2,387	2,080			
	GRAND TOTALS	7,388,912,149	81,504,497	1,103	944,800	7,621	2,258,517,737	46,388,987	2,054	131,103	17,227	373,589,169	6,980,254	1,868	67,430	5,540			

(For notes see page 25.)



TABLE XI (PART II)—ANALYSIS OF CONSUMPTION OF ENERGY FOR THE YEAR ENDED 31 MARCH 1973

No.	Supply Authorities	Groups 7-18 (Inclusive)—Industrial						Groups 2-18 (Inclusive)—Non-domestic						Groups 1-18 (Inclusive)—Total Retail Sales					
		Units Consumed		Revenue	Revenue Per Unit Sold	Consumers	Average Units Per Consumer	Units Consumed		Revenue	Revenue Per Unit Sold	Consumers	Average Units Per Consumer	Units Consumed		Revenue	Revenue Per Unit Sold	Consumers	Average Units Per Consumer
		kWh	Number	\$	c	Number	kWh	kWh	\$	c	Number	kWh	kWh	kWh	\$	c	Number	kWh	
1	Power Boards	11,397,208	33	206,748	1.814	345,370	534,807	1.949	2,659	10,321	104,239,624	1,410,020	1.353	11,423	9,125				
2	Ashburton	641,092,982	33	7,412,505	1.156	306,303	16,340,202	1.305	25,225	46,771	2,254,791,018	27,325,703	1.212	175,169	12,872				
3	Auckland	26,361,070	34	3,410,090	1.290	775,925	956,745	1.711	3,674	15,221	125,632,850	1,792,565	1.427	13,521	9,292				
4	Bay of Islands	138,853,571	64	1,049,149	0.756	2,169,587	1,742,754	1.012	3,309	50,814	241,816,845	2,679,910	1.168	12,040	20,084				
5	Bay of Plenty	26,515,841	40	2,218,865	0.825	662,896	3,366,606	1.188	3,691	47,107	44,463,542	543,174	1.222	9,357	13,245				
6	Beller	5,425,712	34	87,487	1.612	159,580	267,791	1.779	1,225	12,287	43,045,827	581,678	1.351	4,581	9,397				
7	Cambridge	74,784,400	222	1,281,200	1.713	336,867	2,419,394	1.746	3,950	35,940	247,299,868	3,746,023	1.515	16,780	14,738				
8	Central Canterbury	3,173,274	30	51,189	1.613	105,776	2,081,768	2.087	1,602	7,529	54,319,157	696,167	1.282	6,131	8,660				
9	Central Hawke's Bay	800,572	182	39,808	1.702	258,364	2,083,150	1.774	5,520	21,273	306,638,527	4,234,933	1.381	31,326	9,789				
10	Central Waikato	2,014,715	43	39,808	1.980	46,854	2,677,079	2.294	1,627	7,424	48,076,030	686,887	1.429	5,164	8,515				
11	Dannevirke	19,507,959	97	304,900	1.563	201,113	885,255	1.806	3,663	13,386	118,155,168	1,535,799	1.210	11,489	10,284				
12	Egmont	12,450,356	274	191,437	1.538	45,439	860,200	1.601	4,593	27,079	138,955,078	1,841,132	1.325	16,009	8,680				
13	Franklin	39,172,409	101	293,642	0.750	387,646	346,166	0.872	1,789	46,056	50,225,478	439,191	0.874	2,280	22,029				
14	Golden Bay	85,266,210	277	1,141,677	1.339	307,892	2,222,121	1.656	4,864	13,138	367,169,660	4,731,168	1.269	32,252	11,370				
15	Hawke's Bay	20,089,027	96	348,895	1.744	208,427	1,361,112	2.278	3,143	19,012	192,170,662	3,056,588	1.591	22,150	8,533				
16	Horowhenua	182,170,509	473	3,509,329	1.926	385,138	6,046,082	2.011	6,329	47,516	825,559,367	12,071,381	1.462	62,069	13,300				
17	Hutt Valley	29,026,398	30	378,499	1.304	967,546	636,535	1.383	1,688	27,079	86,910,906	1,025,620	1.160	7,006	12,405				
18	King Country	43,670,274	185	731,496	1.675	236,056	89,197,896	1.778	4,344	20,534	187,173,503	2,659,328	1.410	16,367	11,436				
19	Manawatu-Oroua	7,459,231	99	173,995	2.332	75,346	786,919	2.357	2,338	13,138	107,789,123	1,670,660	1.350	11,662	9,243				
20	Marborough	115,467,447	101	980,311	0.849	1,143,241	1,781,424	1.145	5,030	50,921	254,269,053	3,088,522	1.219	19,973	12,732				
21	North Auckland	10,597,492	54	218,797	2.065	196,250	626,588	2.145	3,177	9,194	94,751,179	1,536,302	1.622	12,300	7,703				
22	North Canterbury	20,191,564	25	339,860	1.603	807,662	778,731	1.694	3,588	12,809	122,335,753	1,810,676	1.317	13,136	9,299				
23	Otago Central	22,938,210	75	314,648	1.372	305,843	1,010,516	1.460	1,789	17,035	88,014,417	1,089,039	1.237	8,246	10,674				
24	Poverty Bay	31,162,285	41	493,293	1.583	760,055	1,021,049	2.111	5,591	29,406	149,852,638	2,201,165	1.469	20,234	7,399				
25	South Canterbury	28,358,230	106	397,990	1.403	267,530	871,838	1.505	3,778	15,332	131,835,922	1,560,118	1.183	12,198	10,808				
26	Taranaki	29,589,570	34	62,761	2.424	76,164	8,892,633	2.407	1,499	5,886	31,539,623	525,005	1.668	4,510	6,993				
27	Tararua	29,637,500	152	480,016	1.620	194,983	63,655,510	2.032	3,667	17,359	192,486,460	2,986,642	1.532	21,451	8,973				
28	Tauranga	4,137,529	22	55,600	1.344	188,069	421,734	1.491	1,491	8,144	76,833,682	899,357	1.071	8,307	9,249				
29	Te Awamutu	347,760,606	213	2,703,910	0.778	1,652,677	4,336,302	1.002	8,576	51,147	616,978,515	6,584,250	1.067	34,855	17,701				
30	Thames Valley	20,562,071	233	375,116	1.824	88,249	900,450	2.056	3,162	13,851	148,569,994	1,928,436	1.288	17,253	8,611				
31	Waikato	18,887,117	134	368,381	1.959	140,351	1,085,503	2.038	3,504	13,841	150,004,059	2,485,146	1.657	15,311	9,797				
32	Waikarepa	40,407,120	4	11,756	2.419	121,070	73,832	3.146	651	3,605	11,898,608	256,215	2.153	1,937	6,143				
33	Waipara	7,953,046	18	106,309	1.337	441,836	163,162	1.558	955	16,300	22,306,035	305,728	1.366	2,666	8,397				
34	Waipori	13,242,245	100	233,019	1.917	132,422	671,370	2.127	1,936	16,300	92,784,474	1,403,325	1.513	9,314	9,962				
35	Waitemata	44,210,773	592	828,270	1.874	83,103	3,935,395	2.120	10,805	17,176	694,789,985	10,041,099	1.445	85,767	8,101				
36	Waitemata	11,875,500	73	238,749	2.010	162,678	626,105	2.065	2,464	12,206	74,895,320	1,154,011	1.541	7,887	9,496				
37	Waitemata-Rangitikei	48,610,037	158	646,399	1.330	307,658	1,887,824	1.734	5,702	19,095	283,291,606	3,742,556	1.321	27,105	10,451				
38	West Coast	17,195,401	122	266,840	1.532	140,946	1,706,695	2.062	2,198	15,593	75,760,715	1,234,928	1.630	10,072	7,522				
39		2,211,177,119	6,604	27,704,355	1.233	334,824	62,900,122	1.564	154,227	26,077	9,008,906,730	119,720,720	1.329	808,792	11,139				

(For notes see page 25.)

REPRODUCTION OF THIS TABLE FOR PRIVATE USE IS PERMITTED.

TABLE XI (PART II)—ANALYSIS OF CONSUMPTION OF ENERGY FOR THE YEAR ENDED 31 MARCH 1973—continued

No.	Supply Authorities	Groups 7-18 (Inclusive)—Industrial						Groups 2-18 (Inclusive)—Non-domestic						Groups 1-18 (Inclusive)—Total Retail Sales					
		Units Consumed		Revenue	Revenue Per Unit Sold	Consumers	Average Units Per Consumer	Units Consumed		Revenue	Revenue Per Unit Sold	Consumers	Average Units Per Consumer	Units Consumed		Revenue	Revenue Per Unit Sold	Consumers	Average Units Per Consumer
		kWh	Number	\$	c	Number	kWh	kWh	Number	\$	c	Number	kWh	kWh	Number	\$	c	Number	kWh
1	Christchurch	125,561,696	631	2,072,607	1.651	319,460,744	6,318,968	1.978	5,318,968	1.978	8,668	36,855	1,011,729,662	13,433,761	1.328	66,293	11,726		
2	Dunedin	60,551,492	461	1,266,837	1.573	198,892,483	3,642,711	2.082	3,642,711	2.082	5,980	39,204	570,919,727	7,124,447	1.948	43,741	13,056		
3	Hamilton	12,092,610	135	200,000	1.634	51,231,100	1,105,860	2.139	1,105,860	2.139	2,635	19,443	99,729,500	1,652,620	1.657	10,707	9,245		
4	Invercargill	6,896,566	107	125,744	1.823	64,473,081	1,947,857	1.849	1,947,857	1.849	1,819	27,766	148,555,290	1,954,395	1.316	14,317	10,370		
5	Napier	7,007,592	23	109,163	1.538	28,466,707	546,680	1.920	546,680	1.920	1,218	23,372	57,426,439	1,879,936	1.532	5,548	10,351		
6	Nelson	5,032,865	82	106,330	1.823	25,877,815	596,310	2.266	596,310	2.266	1,447	17,884	68,420,242	984,588	1.439	6,732	10,168		
7	New Plymouth	39,601,769	357	500,475	1.466	75,245,455	1,305,082	2.704	1,305,082	2.704	3,128	24,055	186,437,136	2,301,602	1.277	17,551	10,693		
8	Palmerston North	11,991,692	189	164,053	1.344	46,298,142	933,482	2.116	933,482	2.116	2,541	18,220	156,052,988	1,905,495	1.272	16,397	9,693		
9	Tauranga	5,570,320	66	31,251	1.357	18,941,259	306,264	1.751	306,264	1.751	1,098	17,251	93,405,549	1,442,181	1.249	9,275	6,812		
10	Timaru	7,560,212	72	144,338	1.904	30,425,721	598,066	1.965	598,066	1.965	1,417	21,472	86,186,530	1,239,844	1.439	8,394	10,342		
11	Wellington	46,181,140	226	686,372	1.378	265,677,295	5,323,262	2.070	5,323,262	2.070	10,181	26,095	619,243,125	8,917,102	1.440	53,591	11,555		
12	Whangarei	5,850,640	22	90,546	1.548	24,795,896	372,185	2.308	372,185	2.308	1,943	18,463	61,889,359	930,936	1.504	6,569	9,421		
		352,740,395	2,371	5,567,796	1.578	1,136,689,698	22,406,681	1.971	22,406,681	1.971	41,515	2,738	3,101,992,547	41,926,907	1.352	273,115	11,958		
1	Bluff																		
2	Kaipoi	1,431,410	26	22,782	1.592	4,169,700	85,917	2.061	85,917	2.061	238	17,520	9,121,737	155,466	1.704	1,135	8,037		
3	Lyttelton	1,633,470	70	50,738	2.767	3,502,270	56,073	1.901	56,073	1.901	134	22,742	12,755,930	161,353	1.265	1,330	9,642		
4	Rangiora																		
5	Riccarton	10,564,487	26	126,137	1.194	19,606,878	333,328	1.684	333,328	1.684	457	49,341	42,939,000	530,226	1.235	3,182	13,494		
6	Taumarunui	570,335	24	18,004	2.280	6,941,577	143,800	2.072	143,800	2.072	354	19,609	16,528,430	296,098	1.428	1,610	10,265		
7	Taupo	12,255,663	53	176,304	1.443	29,315,451	489,517	1.670	489,517	1.670	1,174	24,971	64,462,200	881,106	1.068	6,083	10,597		
8	Te Aroha	1,307,690	17	19,303	1.435	3,366,799	74,672	1.710	74,672	1.710	306	14,271	11,546,295	162,461	1.407	1,396	8,271		
9	Thames	4,333,890	24	57,364	1.338	8,925,889	147,694	1.635	147,694	1.635	488	21,877	22,355,200	308,155	1.378	2,386	9,269		
10	Wairua	848,220	3	11,747	1.385	5,400,296	94,592	1.752	94,592	1.752	266	20,502	17,745,286	239,911	1.352	1,640	9,644		
11	Whakatane	907,010	21	25,919	2.626	9,205,477	222,007	2.391	222,007	2.391	592	15,685	29,629,617	451,465	1.524	3,141	9,493		
		34,212,184	264	505,098	1.460	96,622,711	1,748,556	1.810	1,748,556	1.810	4,212	22,940	239,785,064	3,300,281	1.380	23,426	10,235		
1	Heathcote	6,298,122	1	72,170	1.071	12,832,049	165,417	1.289	165,417	1.289	139	92,317	32,023,709	352,610	1.101	2,005	15,064		
2	Kaikoura	504,650	18	10,243	2.030	3,598,173	71,769	1.995	71,769	1.995	354	10,164	9,770,560	166,002	1.699	1,330	7,346		
		7,242,702	19	82,413	1.139	16,430,222	237,186	1.444	237,186	1.444	493	33,927	41,794,269	518,632	1.241	3,396	12,528		
1	AREA ELECTRIC AUTHORITY	19,937,300	87	250,384	1.797	62,139,817	1,287,876	2.073	1,287,876	2.073	3,016	20,603	168,811,687	2,371,862	1.405	17,713	9,530		
	Rotorua	19,937,300	87	250,384	1.797	62,139,817	1,287,876	2.073	1,287,876	2.073	3,016	20,603	168,811,687	2,371,862	1.405	17,713	9,530		
1	GOVERNMENT DEPARTMENT	68,528,890	226	990,772	1.446	110,427,335	1,796,486	1.627	1,796,486	1.627	5,675	19,459	246,935,356	3,901,978	1.580	25,899	9,535		
	Southeastland	68,528,890	226	990,772	1.446	110,427,335	1,796,486	1.627	1,796,486	1.627	5,675	19,459	246,935,356	3,901,978	1.580	25,899	9,535		
	GRAND TOTALS*	2,687,839,960	9,571	35,100,818	1.306	5,444,159,427	90,376,907	1.660	90,376,907	1.660	209,138	26,031	12,808,229,653	171,748,388	1.941	1,152,281	11,116		

\*Shown separately but included with New Zealand Electricity Department.

\*Excludes New Zealand Electricity Department.

\*Excludes New Zealand Electricity Department but includes Southland Electric Power Supply.

Notes— Includes Southland Electric Power Supply.  
 †Wh free of charge included under appropriate usage.

TABLE XIa—SUMMARY OF PUBLIC LIGHTING, RAILWAY AND URBAN TRACTION, INDUSTRIAL SALES (GROUPS 9, 10, AND 16) FOR THE YEAR ENDED 31 MARCH 1973

No.	Supply Authorities	Group 3—Public Lighting				Group 5—Railway Traction				Group 6—Urban Traction				Industrial Sales Group 9, 10 and 16 (inclusive)—Iron and Steel Basic; Non-ferrous metal; Wood, Paper and Pulp Products				
		Units Sold	Revenue per Unit Sold	Con- sumers	Average Units per Consumer	Units Sold	Revenue per Unit Sold	Con- sumers	Average Units per Consumer	Units Sold	Revenue per Unit Sold	Con- sumers	Average Units per Consumer	Units Sold	Revenue	Revenue per Unit Sold	Con- sumers	Average Units per Consumer
1	NEW ZEALAND..	kWh 106,935,006	\$ 1,677,396	c 1.569	Number 1,082	kWh 25,653,425	\$ 344,415	c 1.343	Number 1	kWh 15,594,048	\$ 200,987	c 1.289	Number 3	kWh 5,198,016	\$ 12,026,726	c 0.417	Number 1,606	kWh 1,796,698

Note.—<sup>1</sup>Reduced by 3 as New Zealand Railways traction treated as one consumer.

TABLE XIb—ANALYSIS OF INDUSTRIAL SALES (GROUPS 7, 8, 11-15, 17-18 INCLUSIVE) BY TYPE OF SUPPLY AUTHORITY FOR THE YEAR ENDED 31 MARCH 1973

No.	Type of Supply Authority	Group 7—Coal Mining				Group 8—Other Mining Industries			
		Units Sold	Revenue per Unit Sold	Con- sumers	Average Units per Consumer	Units Sold	Revenue per Unit Sold	Con- sumers	Average Units per Consumer
1	New Zealand Electricity Department <sup>1</sup>	kWh 3,266,364	\$ 51,393	Number 10	kWh 328,636	\$ 89,290	Number 31	kWh 247,602	
2	Electric Power Boards	16,329,616	244,343	67	244,173	1,099,753	337	190,272	
3	City Councils	129,064	3,168	1	129,864	64,923	37	75,008	
4	Borough Councils	..	..	..	..	10,457	6	192,699	
5	County Councils	..	..	..	..	..	..	..	
6	Area Electric Authority	..	..	..	..	..	..	..	
7	Government Department <sup>2</sup>	3,266,364	51,393	10	328,636	89,290	31	247,602	
8	NEW ZEALAND	19,775,844	298,846	78	253,536	1,273,091	412	103,850	

No.	Type of Supply Authority	Group 11—Manufacture of Mechanical and Electrical Equipment				Group 12—Manufacture of Chemicals and Chemical Products				Group 13—Manufacture of Glass, Pottery, China and Earthenware, and Building Materials			
		Units Sold	Revenue per Unit Sold	Con- sumers	Average Units per Consumer	Units Sold	Revenue per Unit Sold	Con- sumers	Average Units per Consumer	Units Sold	Revenue per Unit Sold	Con- sumers	Average Units per Consumer
1	New Zealand Electricity Department <sup>1</sup>	kWh 3,247,187	\$ 38,286	Number 41	kWh 2,290,100	\$ 32,234	Number 6	kWh 1,524,520	\$ 26,005	Number 27	kWh 56,464		
2	Electric Power Boards	194,453,726	3,474,927	1,134	169,712	1,968,024	279	181,481,995	1,924,000	344	327,564		
3	City Councils	85,110,189	1,093,193	404	169,024	2,460,359	69	24,205,379	254,160	107	226,218		
4	Borough Councils	..	..	..	..	..	..	..	..	..	..		
5	County Councils	..	..	..	..	..	..	..	..	..	..		
6	Area Electric Authority	..	..	..	..	..	..	..	..	..	..		
7	Government Department <sup>2</sup>	171,100	4,808	6	192,500	2,766	2	604,740	12,615	9	67,193		
8	NEW ZEALAND	288,593,774	4,689,712	1,628	2,243,593	2,443,593	356	208,157,862	2,225,535	503	56,464		

(For notes see page 27.)

TABLE XIb—ANALYSIS OF INDUSTRIAL SALES (GROUPS 7, 8, 11-15, 17-18 INCLUSIVE) BY TYPE OF SUPPLY AUTHORITY FOR THE YEAR ENDED 31 MARCH 1973—continued

No.	Type of Supply Authority	Industrial Sales															
		Group 14—Food, Beverage, and Tobacco Industries			Group 15—Manufacture of Textiles, Leather and Rubber Products, and Wearing Apparel			Group 17—Other Manufacturing Industries not Classified Elsewhere <sup>1</sup>									
		Units Sold	Revenue	Revenue Per Unit Sold	Consumers	Average Units Per Consumer	Units Sold	Revenue	Revenue Per Unit Sold	Consumers	Average Units Per Consumer	Units Sold	Revenue	Revenue Per Unit Sold	Consumers	Average Units Per Consumer	No.
		kWh	\$	c	Number	kWh	kWh	\$	c	Number	kWh	kWh	\$	c	Number	kWh	
1	New Zealand Electricity Department <sup>1</sup>	47,630,327	654,917	1.375	65	732,774	290,717	4,368	1.979	5	44,143	95,432	1,943	2.036	4	23,658	1
2	Electric Power Boards	622,121,033	8,787,768	1.413	1,137	547,160	131,103,707	2,095,333	1.598	651	201,418	106,077,900	1,659,206	1.564	783	135,476	2
3	City Councils	122,837,019	1,819,624	1.481	421	291,774	1,072,105	1,103,116	1.552	278	252,635	30,667,795	593,366	1.739	272	112,749	3
4	Borough Councils	3,593,990	69,730	1.940	35	102,685	307,798	6,331	2.057	11	27,976	2,110,569	57,417	2.720	82	21,985	4
5	County Councils	2,526,720	42,512	1.683	13	194,363	109,690	2,405	2.193	3	36,563	7,242,782	82,413	1.138	19	381,199	5
6	Area Electric Authority	47,630,327	654,917	1.375	65	732,774	220,717	4,368	1.979	5	44,143	265,500	6,984	2.631	7	37,929	6
7	Government Department <sup>1</sup>	789,709,089	11,374,601	1.424	1,671	477,983	202,833,267	3,211,543	1.383	948	213,959	146,460,058	2,941,329	1.599	1,167	125,501	7
8	NEW ZEALAND																

No.	Type of Supply Authority	Industrial Sales																
		Group 18—Construction Works			Groups 7-18 (inclusive)—Total Industrial Sales <sup>2</sup>				No.									
		Units Sold	Revenue	Average Units per Consumer	Consumers	Revenue	Revenue per Unit Sold	Consumers	Revenue	Revenue per Unit Sold	Consumers	Average Units per Consumer	Units Sold	Revenue	Revenue per Unit Sold	Consumers	Average Units per Consumer	No.
		kWh	\$	kWh	Number	kWh	kWh	Number	kWh	kWh	Number	kWh	kWh	kWh	kWh	Number	kWh	
1	New Zealand Electricity Department <sup>1</sup>	18,108,353	160,658	0.887	8	2,533,544	2,211,177,119	27,704,355	1.253	6,604	334,624	1	2,211,177,119	27,704,355	1.253	6,604	334,624	1
2	Electric Power Boards	45,840,075	689,413	1.504	748	16,671	552,740,595	5,567,795	1.578	2,371	148,773	2	45,840,075	689,413	1.504	748	16,671	2
3	City Councils	7,352,196	121,720	1.656	441	587	34,212,184	505,098	1.688	264	130,349	3	7,352,196	121,720	1.656	441	587	3
4	Borough Councils	11,745	450	3.839	20	587	7,242,782	82,413	1.198	19	381,199	4	11,745	450	3.839	20	587	4
5	County Councils	68,070	1,228	1.804	2	34,035	13,837,390	250,384	1.797	87	160,200	5	68,070	1,228	1.804	2	34,035	5
6	Area Electric Authority	3,184,522	41,252	1.295	5	1,061,507	66,528,090	980,772	1.446	226	303,225	6	3,184,522	41,252	1.295	5	1,061,507	6
7	Government Department <sup>1</sup>	71,380,379	973,477	1.364	1,214	59,798	2,688,038,960	35,100,810	1.309	9,571	280,852	7	71,380,379	973,477	1.364	1,214	59,798	7
8	NEW ZEALAND																	

Norris—Includes Southland Electric Power Supply. <sup>1</sup>Southland Electric Power Supply also included with New Zealand Electricity Department.  
 Lyttelton Borough Council total industrial figures, 1,835,470 kWh at \$50,738, included in Group 17, due to incomplete information. <sup>2</sup>Groups 7-18 (inclusive) Total Industrial sales excludes New Zealand Electricity Department.

TABLE XII—AVERAGES DERIVED FROM PREVIOUS TABLES FOR THE YEAR ENDED 31 MARCH 1973

No.	Supply Authorities	Revenue from Sale of Energy						Cost of Energy			Cost of Transmission and Distribution				Total Annual Costs—Per Unit Sold	Capital Charges Percent of Total Capital Expenditure	Loan Liability Percent of Total Capital Expenditure	Surplus Percent of Total Revenue	Loan Liability Per Consumer
		Per Unit Sold (Including Bulk Sales)	Per Unit Sold (Retail Sales)	Per Unit Sold (Domestic Supply)	Per Unit Sold (Non-domestic Supply)	Per Head of Population	Per Retail Consumer	Per Unit Generated	Per Unit Purchased	Per Unit Sold	Per Unit Operation and Maintenance	Per Unit Sold—Capital Charges	Per Unit Sold—General	Per Unit Sold—Capital Charges					
1	NEW ZEALAND ELECTRICITY DEPARTMENT	c	c	c	c	\$	\$	c	c	c	c	c	c	c	c	c	c	\$	
2	Power Boards	1.353	1.353	1.140	1.949	56.70	123.44	0.448	0.448	0.406	0.106	0.112	0.029	0.135	0.150	0.150	0.150	50.16	
3	Ashburton	1.212	1.212	1.022	1.385	57.63	156.00	0.790	0.630	0.725	0.442	0.158	0.135	0.145	0.150	0.150	0.150	66.10	
4	Auckland	1.427	1.427	1.199	1.711	50.91	139.59	0.660	0.790	0.653	0.407	0.176	0.086	0.135	0.150	0.150	0.150	202.66	
5	Bay of Islands	1.076	1.076	1.346	1.012	78.32	222.50	0.681	0.660	0.727	0.316	0.372	0.126	0.117	0.117	0.117	0.117	135.12	
6	Bay of Plenty	1.222	1.222	1.314	1.188	68.38	161.80	0.752	0.657	0.698	0.458	0.186	0.117	0.117	0.117	0.117	0.117	101.46	
7	Buller	1.351	1.351	1.121	1.779	53.76	125.98	0.782	0.782	0.777	0.321	0.073	0.110	0.110	0.110	0.110	0.110	0.0	
8	Cambridge	1.514	1.514	1.220	1.746	50.31	923.24	0.730	0.730	0.777	0.416	0.224	0.224	0.224	0.224	0.224	0.224	132.22	
9	Central Canterbury	1.282	1.282	1.052	2.087	54.35	113.55	0.714	0.714	0.793	0.410	0.152	0.152	0.152	0.152	0.152	0.152	48.93	
10	Central Hawke's Bay	1.381	1.381	1.137	1.774	45.84	135.15	0.785	0.785	0.837	0.198	0.198	0.198	0.198	0.198	0.198	0.198	75.67	
11	Central Waikato	1.429	1.429	1.138	2.294	55.66	121.65	0.744	0.744	0.815	0.179	0.179	0.219	0.219	0.219	0.219	0.219	0.0	
12	Dannevirke	1.300	1.300	0.941	1.806	60.49	139.67	0.189	0.189	0.767	0.197	0.075	0.202	0.202	0.202	0.202	0.202	34.65	
13	Egmont	0.825	0.825	1.151	1.601	115.01	115.01	0.732	0.732	0.811	0.104	0.069	0.254	0.254	0.254	0.254	0.254	72.21	
14	Golden Bay	1.217	1.217	1.110	1.556	32.69	146.53	0.294	0.294	0.669	0.118	0.118	0.118	0.118	0.118	0.118	0.118	58.33	
15	Hawke's Bay	1.590	1.590	1.280	2.278	64.09	135.73	0.769	0.769	0.843	0.169	0.230	0.197	0.197	0.197	0.197	0.197	76.68	
16	Horowhenua	1.462	1.462	1.148	2.011	61.14	194.48	0.824	0.824	0.860	0.176	0.163	0.151	0.151	0.151	0.151	0.151	81.32	
17	Hutt Valley	1.170	1.170	0.944	1.393	33.32	146.30	0.337	0.337	0.794	0.117	0.080	0.080	0.080	0.080	0.080	0.080	94.60	
18	King Country	1.124	1.124	1.075	1.778	64.63	161.26	0.483	0.483	0.754	0.109	0.319	0.207	0.207	0.207	0.207	0.207	70.73	
19	Manawatu-Oroua	1.550	1.550	1.183	2.356	56.04	143.26	0.754	0.754	0.873	0.110	0.166	0.143	0.143	0.143	0.143	0.143	144.37	
20	Marborough	1.150	1.150	1.334	2.145	71.34	155.14	0.647	0.647	0.675	0.110	0.110	0.110	0.110	0.110	0.110	0.110	187.33	
21	North Auckland	1.422	1.422	1.388	2.145	63.04	124.91	0.711	0.711	0.773	0.223	0.156	0.156	0.156	0.156	0.156	0.156	78.13	
22	North Canterbury	1.317	1.317	1.090	1.694	67.94	125.44	0.731	0.731	0.814	0.119	0.119	0.119	0.119	0.119	0.119	0.119	69.90	
23	Otago Central	1.237	1.237	1.120	2.407	54.47	139.23	0.221	0.221	0.569	0.150	0.178	0.178	0.178	0.178	0.178	0.178	143.56	
24	Poverty Bay	1.469	1.469	1.158	2.148	48.44	108.68	302.363	0.777	0.873	0.287	0.138	0.165	0.165	0.165	0.165	0.165	159.85	
25	South Canterbury	1.238	1.238	1.312	2.111	61.75	162.75	0.704	0.704	0.729	0.109	0.119	0.119	0.119	0.119	0.119	0.119	136.21	
26	Taranaki	1.183	1.183	0.931	1.505	57.89	127.90	0.567	0.567	0.688	0.119	0.130	0.130	0.130	0.130	0.130	0.130	67.72	
27	Tairāhema	1.665	1.665	1.376	2.407	64.42	116.41	0.446	0.446	0.803	0.204	0.204	0.204	0.204	0.204	0.204	0.204	47.90	
28	Tairāhema	1.552	1.552	1.314	2.032	54.47	139.23	0.795	0.795	0.788	0.287	0.147	0.147	0.147	0.147	0.147	0.147	224.89	
29	Te Awamutu	1.171	1.171	0.984	1.491	46.38	108.26	0.604	0.604	0.743	0.138	0.138	0.138	0.138	0.138	0.138	0.138	159.85	
30	Thames Valley	1.056	1.056	1.227	1.802	83.35	188.50	194.275	0.699	0.699	0.729	0.119	0.119	0.119	0.119	0.119	0.119	136.21	
31	Waimea	1.118	1.118	0.981	2.056	47.86	111.77	0.846	0.846	0.763	0.135	0.100	0.100	0.100	0.100	0.100	0.100	65.32	
32	Waipara	1.657	1.657	1.379	2.238	96.35	162.31	0.446	0.446	0.803	0.135	0.160	0.160	0.160	0.160	0.160	0.160	145.06	
33	Waikare	1.766	1.766	1.509	3.146	79.00	114.68	0.425	0.425	0.584	0.382	0.164	0.164	0.164	0.164	0.164	0.164	233.68	
34	Waikare	1.127	1.127	1.197	1.558	54.11	114.68	0.835	0.835	0.835	0.112	0.112	0.112	0.112	0.112	0.112	0.112	80.39	
35	Waikare	1.512	1.512	1.196	2.127	65.42	150.67	0.743	0.743	0.795	0.243	0.118	0.118	0.118	0.118	0.118	0.118	74.90	
36	Waikare	1.445	1.445	1.199	2.120	42.12	117.07	0.874	0.874	0.942	0.210	0.109	0.109	0.109	0.109	0.109	0.109	99.16	
37	Waikare	1.541	1.541	1.104	2.065	57.29	146.30	0.742	0.742	0.822	0.175	0.175	0.175	0.175	0.175	0.175	0.175	166.03	
38	Waikare	1.321	1.321	1.064	1.734	54.68	138.08	0.335	0.335	0.774	0.158	0.158	0.158	0.158	0.158	0.158	0.158	8.81	
39	Waikare	1.615	1.615	1.273	2.062	50.59	122.61	0.515	0.515	0.763	0.132	0.132	0.132	0.132	0.132	0.132	0.132	101.91	
	West Coast	1.297	1.297	1.139	1.565	56.91	148.02	0.372	0.372	0.802	0.157	0.124	0.124	0.124	0.124	0.124	0.124	96.04	
	West Coast	1.297	1.297	1.139	1.565	56.91	148.02	0.372	0.372	0.802	0.157	0.124	0.124	0.124	0.124	0.124	0.124	103.95	

(For notes see page 29.)



No.	Supply Authorities	Revenue from Sale of Energy						Cost of Energy						Cost of Transmission and Distribution						Capital Charges Percent of Total Capital Expenditure	Loan Liability Percent of Total Capital Expenditure	Surplus Percent of Total Revenue	Loan Liability Per Consumer	No.
		Per Unit Sold (Including Bulk Sales)	Per Unit Sold (Retail Sales)	Per Unit Sold (Domestic Supply <sup>1</sup> )	Per Unit Sold (Non-domestic Supply <sup>2</sup> )	Per Head of Population <sup>3</sup>	Per Retail Consumer	Per Unit Generated	Per Unit Purchased	Per Unit Sold Operation and Maintenance	Per Unit Sold Management and General	Per Unit Sold—Capital Charges	Per Unit Sold—Total	Total Annual Costs—Per Unit Sold	Capital Charges Percent of Total Capital Expenditure	Loan Liability Percent of Total Capital Expenditure	Surplus Percent of Total Revenue	Loan Liability Per Consumer	No.					
1	Christchurch	1.339	1.328	1.028	1.978	55.85	155.69	0.478	0.882	0.992	0.992	0.427	1.959	7.40	12.49	9.28	42.51	1						
2	Dunedin	1.248	1.248	0.936	1.892	61.67	162.88	0.702	0.702	0.681	0.681	0.463	1.144	4.06	6.05	11.23	33.90	2						
3	Hamilton	1.657	1.657	1.127	2.159	69.35	153.20	0.828	0.828	0.875	0.875	0.341	1.215	1.88	6.05	26.74	46.51	3						
4	Invercargill	1.316	1.316	1.036	1.845	48.15	136.51	0.788	0.788	0.830	0.830	0.348	1.179	3.73	19.06	13.14	145.80	4						
5	Napier	1.532	1.532	1.151	1.921	67.43	150.60	0.783	0.783	0.826	0.826	0.753	1.579	9.29	40.16	-0.65	145.80	5						
6	Nelson	1.439	1.439	0.936	2.266	60.59	146.25	0.485	0.766	0.824	0.824	0.470	1.294	4.02	15.16	11.12	36.06	6						
7	New Plymouth	1.277	1.277	0.968	1.734	52.02	135.70	0.485	0.725	0.762	0.762	0.353	1.141	4.04	15.16	11.12	36.06	7						
8	Palmerton North	1.272	1.272	1.180	2.016	47.50	121.16	0.924	0.802	0.855	0.855	0.297	1.512	4.80	10.27	10.27	793.81	8						
9	Tauranga	1.240	1.240	0.704	1.723	73.70	135.02	0.532	0.880	0.748	0.748	0.305	1.052	2.35	60.19	21.83	793.81	9						
10	Timaru	1.439	1.439	1.151	1.966	60.01	148.77	0.743	0.743	0.784	0.784	0.432	1.216	5.28	5.53	16.93	13.56	10						
11	Wellington	1.440	1.440	0.967	2.079	72.15	166.39	0.849	0.849	0.923	0.923	0.483	1.406	5.66	29.24	4.57	97.36	11						
12	Whangarei	1.504	1.504	0.967	2.308	55.41	141.72	0.889	0.889	0.949	0.949	0.340	1.289	5.92	14.38	14.38	97.36	12						
		1.351	1.352	0.993	1.971	59.52	153.51	0.484	0.820	0.853	0.853	0.431	1.286	5.41	19.98	6.72	70.27							
	<b>Borough Councils</b>	1.704	1.704	1.404	2.061	47.83	136.97	0.896	0.896	1.008	1.008	0.616	1.624	5.51	1.08	9.28	2.16							
1	Bluff	1.265	1.265	1.138	1.601	41.26	121.96	0.801	0.801	0.861	0.861	0.302	1.163	2.79	1.08	9.28	2.16	1						
2	Kaipara	1.433	1.433	1.043	1.914	64.55	136.87	0.782	0.782	0.824	0.824	0.480	1.327	1.84	1.08	9.28	2.16	2						
3	Lyttelton	1.233	1.233	0.850	1.684	74.47	166.63	0.851	0.851	0.870	0.870	0.413	1.283	7.59	7.61	19.26	101.60	3						
4	Rangiora	1.428	1.428	0.963	2.072	57.31	146.64	0.364	0.774	0.821	0.821	0.353	1.174	4.25	24.96	101.60	4							
5	Tauramunui	1.367	1.367	1.114	1.710	58.55	144.85	0.312	0.841	0.722	0.722	0.248	1.325	6.84	46.98	3.46	214.26	5						
6	Tauira	1.407	1.407	1.223	1.710	50.93	116.38	0.941	0.941	1.044	1.044	0.404	1.449	3.79	46.98	3.46	214.26	6						
7	Tc Aroha	1.378	1.378	1.195	1.655	52.50	129.45	0.889	0.889	0.896	0.896	0.256	1.152	4.98	2.11	16.92	2.25	7						
8	Thames	1.352	1.352	1.177	1.752	43.31	130.39	0.848	0.848	0.917	0.917	0.321	1.239	5.00	6.88	8.42	10.58	8						
9	Waikanae	1.524	1.524	1.128	2.391	53.20	143.73	0.866	0.866	0.932	0.932	0.431	1.363	5.26	8.21	11.36	21.16	9						
10	Whakatane	1.301	1.301	1.090	1.810	57.18	144.84	0.331	2.842	0.851	0.851	0.446	1.298	6.34	28.98	7.67	77.72	10						
11	Whakatane	1.301	1.301	1.090	1.810	57.18	144.84	0.331	2.842	0.851	0.851	0.446	1.298	6.34	28.98	7.67	77.72	11						
	<b>County Councils</b>	1.101	1.101	0.975	1.289	55.18	175.78	0.821	0.821	0.869	0.869	0.343	1.212	10.70	21.21	-6.68	47.90							
1	Heathcote	1.699	1.699	1.527	1.995	59.94	124.83	0.793	0.793	0.908	0.908	0.656	1.564	4.56	1.93	8.49	5.02	1						
2	Kaikoura	1.241	1.241	1.110	1.444	56.62	155.47	0.814	0.814	0.879	0.879	0.416	1.295	8.05	15.66	-1.82	37.50	2						
	<b>Area Electric Authority</b>	1.405	1.405	1.016	1.405	46.13	133.91	0.816	0.816	0.899	0.899	0.430	1.330	3.23	69.32	9.15	112.38							
1	Rotorua	1.405	1.405	1.016	1.405	46.13	133.91	0.816	0.816	0.899	0.899	0.430	1.330	3.23	69.32	9.15	112.38	1						
	<b>Government Department</b>	1.264	1.264	1.542	1.580	57.25	150.66	0.447	0.754	0.509	0.509	0.592	1.107	5.69	61.66	5.35	..							
1	Southland	1.580	1.580	1.542	1.580	57.25	150.66	0.447	0.754	0.509	0.509	0.592	1.107	5.69	61.66	5.35	..	1						
	<b>Averages for all Supply Authorities</b>	1.341	1.341	1.103	1.661	57.74	153.9	0.447	0.754	0.509	0.509	0.592	1.107	5.69	61.66	5.35	..							
	<b>GRAND TOTALS</b>	1.243	1.243	1.082	1.389	56.15	144.57	0.444	0.723	0.515	0.515	0.627	1.142	5.87	61.71	6.27	..							
	1977	1.267	1.267	1.082	1.537	51.88	136.26	0.465	0.820	0.543	0.543	0.613	1.156	6.00	62.83	7.57	..							
	1970	1.294	1.294	1.085	1.559	50.93	131.82	0.459	0.701	0.536	0.536	0.592	1.119	6.14	63.87	9.57	..							
	1969	1.302	1.302	1.091	1.586	49.10	125.97	0.417	0.662	0.487	0.487	0.583	1.070	6.15	65.31	12.20	..							
	1968	1.215	1.215	0.932	1.479	43.78	118.54	0.390	0.537	0.458	0.458	0.562	1.020	5.92	65.19	12.15	..							
	1967	1.116	1.116	0.932	1.368	39.41	107.96	0.390	0.476	0.458	0.458	0.562	0.919	5.48	65.14	12.15	..							
	1966	1.096	1.096	0.870	1.334	36.90	101.94	0.390	0.448	0.458	0.458	0.562	0.919	5.60	65.50	11.65	..							
	1965	1.099	1.099	0.823	1.337	34.22	95.72	0.390	0.432	0.458	0.458	0.562	0.923	5.70	66.95	11.29	..							
	1964	1.103	1.103	0.919	1.360	32.45	91.63	0.390	0.421	0.458	0.458	0.562	0.923	5.71	69.85	11.28	..							
	1963	1.121	1.121	0.926	1.398	29.72	84.76	0.390	0.369	0.458	0.458	0.562	0.942	5.78	71.63	11.26	..							

Notes: <sup>1</sup>Also shown in table XI. <sup>2</sup>Net costs divided by retail units. <sup>3</sup>Includes Southland Electric Power Supply. <sup>4</sup>Also included in New Zealand Electricity Department. <sup>5</sup>Includes power purchased from sundry private plants.

TABLE XIII—STATISTICS OF POPULATION, TOTAL CONSUMERS, ELECTRIC RANGES AND WATER-HEATERS, STAFF EMPLOYED, FOR THE YEAR ENDED 31 MARCH 1973

No.	Supply Authorities	Population Included in Area of Supply	Total Number of Consumers <sup>1</sup>	Ratio of Total Number of Consumers to Population	Electric Ranges		Electric Water-heaters		Consumers Per Circuit-kilometre of Line	Staff Employed <sup>2</sup> No.
					Domestic	Ratio, Number of Domestic Ranges to Number of Domestic Consumers	Domestic	Ratio, Number of Domestic Water-heaters to Number of Domestic Consumers		
1	NEW ZEALAND ELECTRICITY DEPARTMENT <sup>3</sup>	..	27,625	..	17,356	..	16,530	..	5,067	1
	POWER BOARDS									
1	Ashburton	24,870	11,423	45.94	8,185	93.40	10,755	122.72	4.26	93
2	Auckland	474,160	175,169	36.95	126,070	84.08	136,735	91.20	31.57	972
3	Bay of Islands	35,210	13,521	38.41	8,925	90.64	8,450	85.82	3.75	109
4	Bay of Plenty	34,130	12,040	35.28	6,811	78.74	6,679	77.21	7.38	130
5	Buller	7,920	3,357	42.39	1,428	53.57	1,152	43.22	5.32	34
6	Cambridge	10,820	4,581	42.34	3,154	93.99	3,575	106.53	12.56	25
7	Central Canterbury	41,480	16,780	40.46	11,892	92.48	11,894	92.49	5.26	152
8	Central Hawke's Bay	12,810	6,131	47.87	4,751	104.91	4,635	102.35	3.11	33
9	Central Waikato	92,380	31,326	33.91	22,792	88.33	22,574	87.48	7.45	214
10	Dannevirke	12,340	5,646	45.76	3,865	96.17	3,745	93.19	5.74	44
11	Egmont	25,390	11,489	45.26	7,298	93.26	7,369	94.17	7.14	80
12	Franklin	33,410	16,009	45.22	10,406	93.96	10,139	91.55	6.29	104
13	Golden Bay	3,300	2,280	69.10	1,171	74.12	1,171	84.43	4.09	17
14	Hawke's Bay	90,830	32,292	35.56	26,028	94.90	24,983	91.09	8.52	246
15	Horowhenua	47,690	22,520	47.23	16,099	83.09	16,723	86.31	16.52	159
16	Hutt Valley	197,420	62,069	31.45	51,839	93.01	54,352	97.51	36.98	463
17	King Country	19,020	7,006	36.84	4,315	81.14	4,135	77.76	3.84	47
18	Manawatu-Oroua	40,820	16,367	40.10	11,351	94.42	11,266	93.71	7.43	140
19	Marlborough	29,810	11,662	39.13	7,736	84.79	8,222	90.12	6.72	119
20	North Auckland	43,430	19,973	45.99	14,520	97.17	13,586	90.92	4.82	169
21	North Canterbury	24,370	12,300	50.48	8,134	89.16	8,373	91.78	3.51	105
22	Otago	25,960	13,156	50.68	6,286	65.70	6,374	66.62	3.19	99
23	Otago Central	16,700	8,246	49.37	5,313	82.29	5,227	80.96	4.25	120
24	Poverty Bay	45,440	20,254	44.58	11,775	80.31	11,616	79.22	8.25	166
25	South Canterbury	38,380	14,562	37.95	9,788	75.78	9,171	71.00	5.76	130
26	Taranaki	26,950	12,198	45.27	7,723	91.73	7,419	88.12	8.08	86
27	Tararua	8,150	4,510	55.34	2,754	91.47	2,613	86.79	3.58	31
28	Tauranga	54,830	21,451	39.13	16,742	94.15	15,630	87.89	6.75	186
29	Te Awamutu	19,390	8,307	42.85	5,151	89.68	5,305	92.36	7.25	41
30	Thames Valley	78,990	34,855	44.13	25,241	96.06	23,594	89.79	5.66	283
31	Wainona	40,290	17,253	42.83	13,140	93.26	14,029	99.56	7.99	123
32	Wairarapa	37,120	15,311	41.25	10,779	91.30	11,075	93.81	5.67	143
33	Wairere	..	1,937	59.79	1,162	90.36	1,379	107.24	1.97	18
34	Wairoa	5,650	2,666	47.19	1,622	94.80	1,635	95.56	2.84	27
35	Waikati	21,450	9,314	43.43	7,101	96.25	6,762	91.66	5.35	96

(For notes see page 32.)

TABLE XIII—STATISTICS OF POPULATION, TOTAL CONSUMERS, ELECTRIC RANGES AND WATER-HEATERS, STAFF EMPLOYED, FOR THE YEAR ENDED 31 MARCH 1973—continued

No.	Supply Authorities	Population Included in Area of Supply	Total Number of Consumers <sup>1</sup>	Ratio of Total Number of Consumers to Population	Electric Ranges		Electric Water-heaters		Consumers Per Circuit-kilometre of Line	Staff Employed <sup>2</sup> No.
					Domestic	Ratio, Number of Domestic Ranges to Number of Domestic Consumers	Domestic	Ratio, Number of Domestic Water-heaters to Number of Domestic Consumers		
<b>POWER BOARDS—continued</b>										
36	Waitemata	238,360	85,767	35.99	65,225	87.02	69,081	92.16	11.63	505
37	Waitemata	17,150	7,887	45.99	5,010	92.73	4,940	91.44	3.94	65
38	Wanganui-Rangitikei	68,440	27,105	39.61	18,442	86.17	18,584	86.83	7.12	186
39	West Coast	24,410	10,072	41.27	5,274	66.98	4,314	54.79	7.31	124
		2,074,510	808,792	38.99	575,155	87.87	589,261	90.02	8.31	5,884
<b>CITY COUNCILS</b>										
1	Christchurch	240,510	86,283	35.88	70,955	91.42	75,629	97.45	36.19	541
2	Dunedin	115,530	43,741	37.87	28,250	74.84	33,452	88.62	28.69	340
3	Hamilton	23,830	10,787	45.27	5,698	69.90	6,853	84.07	43.48	63
4	Invercargill	40,590	14,317	35.28	7,812	62.66	7,994	64.12	36.63	80
5	Napier	13,050	5,548	42.52	3,173	73.28	3,796	87.67	43.58	91
6	Nelson	16,250	6,732	41.43	3,423	64.77	5,240	99.15	49.63	60
7	New Plymouth	45,780	17,551	38.34	11,155	77.35	13,049	90.48	17.94	152
8	Palmerston North	41,800	16,387	39.21	11,218	81.02	12,973	93.70	55.27	87
9	Tauranga	6,000	3,275	54.59	2,047	94.03	2,136	98.12	23.23	34
10	Timaru	20,660	8,334	40.34	5,369	77.63	5,855	84.65	31.35	55
11	Wellington	123,590	53,591	43.37	22,987	52.96	36,607	84.33	28.55	312
12	Whangarei	16,800	6,569	39.11	5,145	98.46	5,041	96.46	49.02	29
		704,390	273,115	38.77	177,232	76.53	208,625	90.08	32.11	1,844
<b>BOROUGH COUNCILS</b>										
1	Bluff	3,250	1,135	34.93	518	57.75	337	37.57	34.28	13
2	Kaipoi	3,910	1,323	33.84	1,073	91.79	1,119	95.73	44.78	13
3	Lytelton	2,820	1,330	47.17	1,008	94.48	987	92.51	32.52	11
4	Riccarton	7,120	3,182	44.70	2,404	88.23	2,677	98.24	56.08	26
5	Taumarunui	4,120	1,610	39.08	920	73.25	904	71.98	44.63	11

(For notes see page 32.)



TABLE XIII—STATISTICS OF POPULATION, TOTAL CONSUMERS, ELECTRIC RANGES AND WATER-HEATERS, STAFF EMPLOYED, FOR THE YEAR ENDED 31 MARCH 1973—continued

No.	Supply Authorities	Population Included in Area of Supply	Total Number of Consumers <sup>1</sup>	Ratio of Total Number of Consumers to Population	Electric Ranges		Electric Water-heaters		Consumers Per Circuit—kilometre of Line	Staff Employed <sup>2</sup> No.
					Domestic	Ratio, Number of Domestic Ranges to Number of Domestic Consumers	Domestic	Ratio, Number of Domestic Water-heaters to Number of Domestic Consumers		
<b>Borough Councils—continued</b>										
6	Taupo ..	15,050	6,083	40.42	4,368	88.98	4,600	93.71	9.75	49
7	Te Aroha ..	3,190	1,396	43.77	892	81.84	942	86.43	17.76	7
8	Thames ..	5,870	2,386	40.65	1,921	97.12	1,991	100.66	26.27	10
9	Wauroa ..	5,540	1,840	33.22	1,489	94.60	1,451	92.19	34.44	8
10	Whakatane ..	8,470	3,141	37.09	2,529	99.22	2,581	101.26	56.87	16
		59,340	23,426	39.48	17,122	89.11	17,589	91.54	21.33	164
<b>County Councils</b>										
1	Heathcote ..	6,390	2,006	31.40	1,833	98.18	1,839	98.51	35.44	15
2	Kaikoura ..	2,770	1,330	48.02	752	77.05	734	75.21	7.44	9
		9,160	3,336	14.52	2,585	90.93	2,573	90.50	14.18	24
<b>Area Electric Authority</b>										
1	Rotorua ..	51,420	17,713	34.45	13,989	95.18	13,401	91.18	12.25	105
		51,420	17,713	34.45	13,989	95.18	13,401	91.18	12.25	105
<b>Government Department</b>										
1	Southland <sup>4</sup> ..	68,160	25,899	38.00	15,626	77.26	14,756	72.78	3.58	249
		68,160	25,899	38.00	15,626	77.26	14,756	72.78	3.58	249
	<b>GRAND TOTALS</b> ..	2,996,980	1,154,007	38.90	803,439	85.19	847,979	89.91	10.65	13,088

Total population of Dominion as at 1 April 1973 was 2,980,738. Ratio of population in area of supply to total population of Dominion = 99.796 percent.

Mean population of Dominion as at 1 April 1973 was 2,876,388.

Notes—<sup>1</sup>For detailed analysis see table XI. <sup>2</sup>As at 31 March 1973. <sup>3</sup>Includes Southland Electric Power Supply. <sup>4</sup>Shown separately but included with New Zealand Electricity Department.

XIV—STATISTICS RELATING TO ELECTRICIANS REGISTRATION BOARD, YEAR ENDED 31 MARCH 1973

(The figures in parentheses are for the previous year)

of board meetings: 16 (23)

ations—  
ctors .. .. .  
ical technicians .. .. .  
icians .. .. .  
ical mechanics .. .. .  
o servicemen .. .. .  
o mechanics .. .. .  
ed Registration (note 1) .. .. .  
sional licences .. .. .  
ts to assist .. .. .  
ation for ruling on experience as an electrical technician .. .. .  
ation for ruling on experience, others .. .. .

	During the Year	Current Registration	Removed from Register
	35 (46)	549 (589)	75
	145 (465)	1,732 (1,624)	7
	512 (540)	11,435 (11,274)	351*
	74 (151)	482 (419)	9
	238 (298)	3,388 (3,157)	7*
	13 (10)	27 (17)	3
	248 (222)	2,732 (2,557)	73*
	440 (317)		
	319 (220)		
	288		
	242 (206)		

152 electricians, 5 radio servicemen, and 26 limited registration, purged from registers.

Current Limited Registration—The following is a survey of the current registration under the Electricians Act 1952 up to and including 31 March 1973:

Registered for—

Servicing of electrical appliances .. .. .	2,265 (1,928)
Cable jointing work .. .. .	27 (23)
Supply authority work .. .. .	440 (406)

inations were held as follows:

Practical .. .. .	28 April, 14 October
Written .. .. .	28 October, a.m. and p.m.

icians and electrical fitters, theory paper .. .. .  
icians and electrical fitters, regulations paper .. .. .  
icians and electrical fitters, two practical papers .. .. .  
ical servicemen, theory paper .. .. .  
ical servicemen, regulations paper .. .. .  
o servicemen, theory paper .. .. .  
o servicemen, wiring paper .. .. .  
ed registration, written paper .. .. .  
o servicemen, electrical servicemen, and limited .. .. .  
istration, two practical papers .. .. .

Candidates	Number Passed	Passed Percentage	Highest Marks
796 (689)	430 (454)	54 (66)	82 (96)
786 (653)	666 (512)	85 (78)	99 (98)
809 (685)	549 (475)	69 (69)	94 (97)
6	2	33	
7	6	86	
125 (138)	95 (89)	76 (65)	92 (81)
258 (176)	245 (169)	95 (96)	96
277 (304)	195 (218)	70 (72)	97
579 (622)	434 (444)	77 (71)	96 (93)
3,630 (3,267)	2,613 (2,361)	72 (72)	

of Act and defective work—

ctive work reports .. .. .	5 (7)
ch of Act reports .. .. .	15 (21)
ctions authorised .. .. .	7 (3)
ctions completed .. .. .	6 (nil)
otions .. .. .	2 (2)
rsements made .. .. .	nil (nil)
rsements removed .. .. .	nil (1)
als .. .. .	1 (nil)

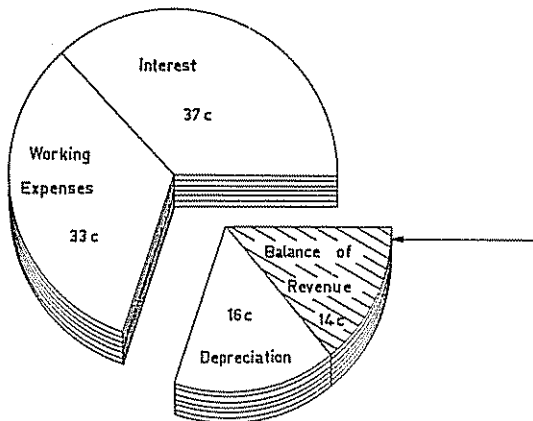
N.Z. ELECTRICITY DEPT. ONLY

TOTAL REVENUE 1972-73

How each dollar of revenue is spent

TOTAL REVENUE

Expenses .. .. .	\$m 37.05
.. .. .	41.56
.. .. .	17.26
.. .. .	95.87
Revenue .. .. .	15.27
	<u>111.14</u>



CAPITAL EXPENDITURE

From revenue—	\$m
Depreciation .. .. .	17.26
Balance of revenue .. .. .	15.27
Less loans repaid .. .. .	8.36
	<u>6.91</u>
	24.17
Less adjustments .. .. .	2.21
	<u>21.96</u>
From loans .. .. .	88.89
	<u>110.85</u>

Section 34, Electricity Act 1968, requires the bulk price to be so calculated in respect of the period for which prices are charged, to be 25 percent, or such other percentage, not exceeding 50 percent more than the total estimated working expenses, interest, and depreciation. The balance resulting (cross hatched area above) is credited to the General Reserve Account from which loan repayments

percentage fixed since 1.10.67, by the Minister of Electricity and the Minister of Finance, after consultation with the Electrical Authorities Association in accordance with the Act, is 50 percent. The actual balance of revenue this year of \$15.27 million is of the working expenses, interest, and depreciation costs of \$95.87 million.

# N.Z. ELECTRICITY DEPT ONLY TOTAL RECEIPTS & PAYMENTS 10 YEARS TO 31-3-73

(Showing in cross hatched areas the proportion of revenue used to finance capital works)

