

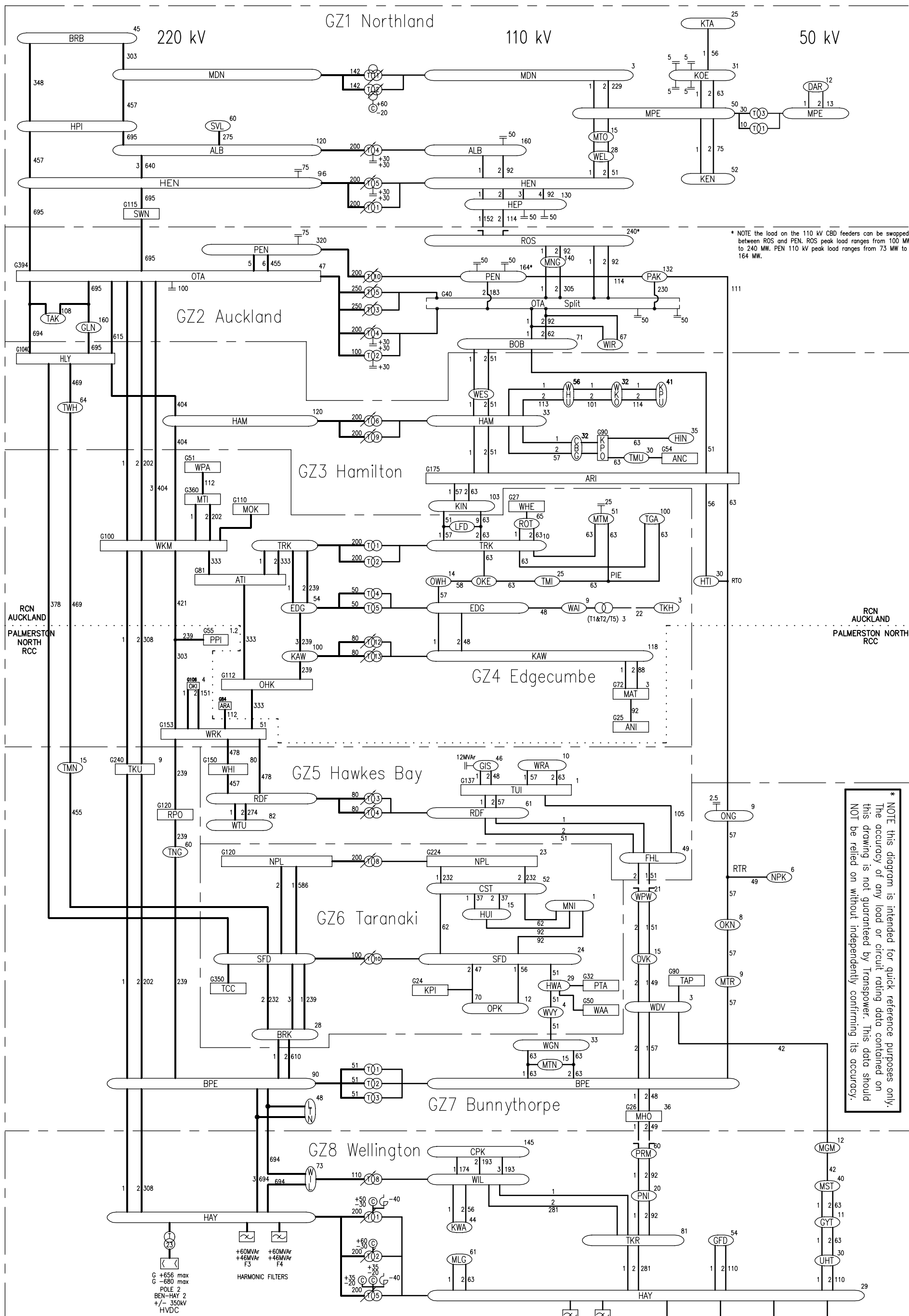
| | | | | | | | | | | | | | | | | | | | | | | |
|--------|---|---|---|---|---|---|---|---|---|---|---|---|---|---|---|---|---|---|---|---|---|---|
| ISSUE | I | B | C | D | E | F | G | H | J | K | L | M | N | O | P | R | S | T | V | X | Y | Z |
| AP. C. | A | A | A | A | A | A | A | A | A | A | A | A | A | A | A | A | A | A | A | A | A | A |

| Amendment | BY | CHD | APP | DATE |
|--|----|-----|-----|----------|
| Y UPDATES TO 16/08/01 ADDED INCLUDING VARIOUS LOAD RATINGS. | TN | BP | CS | 16/08/01 |
| Z UPDATES TO 10/06/02 ADDED INCLUDING VARIOUS LOAD RATINGS. | TN | BP | CS | 10/06/02 |
| AA UPDATES TO 31/03/03 ADDED INCLUDING VARIOUS LOAD RATINGS. | TN | BP | CS | 31/03/03 |
| AB UPDATES TO 01/05/04 ADDED INCLUDING VARIOUS LOAD RATINGS. | BP | MM | CS | 01/05/04 |
| AC UPDATES TO 01/05/05 ADDED INCLUDING VARIOUS LOAD RATINGS. | BP | MM | CS | 01/05/05 |

| Amendment | BY | CHD | APP | DATE |
|--|----|-----|-----|----------|
| AD HARD CPK CCT ADDED. RATINGS UPDATED TO 01/01/06. | BP | MM | GS | 01/01/06 |
| AE SUBSTATION LOAD PEAKS AND CIRCUIT RATINGS CHANGED. HEP & PEN OMS ADDED. | BP | MM | GS | 09/06/06 |

| Amendment | BY | CHD | APP | DATE |
|-----------|----|-----|-----|----------|
| AW | BP | MM | GS | 01/06/06 |
| AX | BP | MM | GS | 01/06/06 |
| AY | BP | MM | GS | 01/06/06 |
| AZ | BP | MM | GS | 01/06/06 |

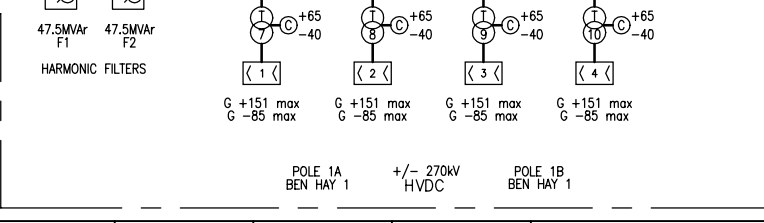
| DATE OF CURRENT ISSUE | APP. ISSUE | C. Bull | S. Mullon |
|-----------------------|------------|---------|-----------|
| 9/06 | 6/88 | | |
| | 6/88 | | |
| | 6/88 | | |



* NOTE the load on the 110 kV CBD feeders can be swapped between ROS and PEN. ROS peak load ranges from 100 MW to 240 MW. PEN 110 kV peak load ranges from 73 MW to 164 MW.

* NOTE this diagram is intended for quick reference purposes only. The accuracy of any load or circuit rating data contained on this drawing is not guaranteed by Transpower. This data should NOT be relied on without independently confirming its accuracy.

| LEGEND | |
|--------|--|
| | Power Station (showing generation MW) |
| | Substation (Showing peak load MVA 2005) MD Interconnecting Transformer 100MVA Rating |
| | Harmonic Filter |
| | HVDC Valve Group |
| | On Load Tap Change Transformer |
| | Rotary Condenser Rating -15 to +30 MVAR |
| | Static Capacitor - Two Stages Switchable MVAR |
| | 220 kV Lines |
| | 110 kV Lines |
| | 50 kV Lines |
| | Transmission Circuit No. |
| | Summer Conductor rating (MVA) |
| | Regional Boundary |
| | Operational System Split |



TRANS POWER

TRANS POWER TRANSMISSION
 NORTH ISLAND POWER SYSTEM DIAGRAM
 LOADFLOW TRANSMISSION LINE RATINGS
 AND SUBSTATION LOADS
NIPS-6
 ISSUE