



Hydrological Modelling Dataset - Interim Update

**Report 4: Hydro-power Schemes Background and
Descriptions**



Hydrological Modelling Dataset

- Interim Update

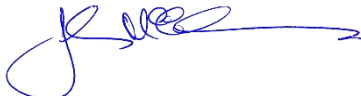
Report 4: Hydro-power Schemes Background and Descriptions

Prepared By



Lizzie Fox
Water Resource Scientist

Reviewed By



Dr Jack McConchie
Technical Principal - Hydrology

Approved for
Release By



Dr Jack McConchie
Technical Principal - Hydrology

Opus International Consultants Ltd
Wellington Environmental Office
L10, Majestic Centre, 100 Willis St
PO Box 12 003, Thorndon, Wellington 6144
New Zealand

Telephone: +64 4 471 7000

Facsimile: +64 4 499 3699

Date: August 2017

Reference: 3-53376.00

Status: 2017.2

VERSION CONTROL			
REFERENCE	ISSUE NO.	DATE	DESCRIPTION OF CHANGES
3-53203.00	2015.1	Nov 2015	Issue 1
3-53203.16	2016.1	3 June 2016	Interim update 2016 – draft for EA review
3-53203.16	2016.2	30 June 2016	Interim update 2016 – final for publication
3-53376.00	2017.1	30 June 2017	Interim update 2017 – draft for EA review
3-53376.00	2017.2	August 2017	Interim update 2017 – final for publication

Preface

A large proportion of New Zealand's electricity needs is met by generation from hydro power. Information about the distribution of inflows, and the capability of the various hydro systems is necessary to ensure a reliable, competitive and efficient market and electricity system.

The hydrological modelling dataset (HMD) contains hydrological information made available by the Electricity Authority. The dataset was known as SPECTRA until 2010. In 2015 the dataset was revised to become the HMD, a comprehensive dataset that can be relied upon by modellers and analysts to test scenarios, provide commentary, and inform decision-making.

The HMD is comprised of data provided by hydro generators, supplemented by other sources. These parties are acknowledged for their contribution, and for making this data available.

The HMD consists of three main components:

1. Infrastructure and hydrological constraint attributes;
This dataset records standing information about the capability of the main hydro schemes.
2. Flows;
This time series provides inflows to reservoirs and flows at various existing or potential hydro generating sites.
3. Storage and spill;
This time series indicates storage for the main hydro schemes.

The report provides background and descriptive information on the hydro schemes and monitoring sites within the HMD.

Contents

1	Introduction	1
2	North Island.....	1
2.1	Waikato (Arapuni and Karapiro).....	1
2.2	Tokaanu, Rangipo and Taupo	2
2.3	Waikaremoana	6
2.4	Matahina.....	8
2.5	Wheao and Flaxy	10
2.6	Mangahao.....	11
2.7	Patea.....	12
2.8	Kaimai	13
2.9	Ngaruroro River, Hawke’s Bay.....	15
2.10	Mohaka River, Hawke’s Bay.....	16
3	South Island.....	16
3.1	Waitaki.....	16
3.2	Manapouri.....	20
3.3	Monowai.....	22
3.4	Clutha.....	23
3.5	Cobb.....	24
3.6	Coleridge	24
3.7	Highbank	26
3.8	Waipori.....	27
3.9	Grey River	28
3.10	Waiau River, Canterbury.....	29
3.11	Wairau River, Marlborough	30
3.12	Hurunui River, Canterbury	31

1 Introduction

The Hydrological Modelling Dataset (HMD) flow records have been calculated at a number of locations throughout New Zealand which have perceived hydro-electric power potential. This HMD Interim Update was requested by the Electricity Authority. It includes a discussion of the background to the various hydro schemes. It is designed to be read in conjunction with Reports 1, 2, 2a, and 3 if more information is required.

The following power companies have provided data for the Hydrological Modelling Dataset (HMD):

- Contact Energy Ltd
- Genesis Energy Ltd
- Meridian Energy Ltd
- Mercury Ltd
- Todd Energy
- Pioneer Generation
- Trustpower

The HMD also relies heavily on data supplied by the National Institute of Water and Atmospheric Research (NIWA) from the Water Resources Archive (and funded by PGSF). Flow series from a number of rivers form a fundamental component of the datasets discussed. Their use in this report is consistent with the purpose for which Government funding is provided for their collection.

Additional river flow series were provided by Hawkes Bay Regional Council and Canterbury Regional Council. Their assistance with this project is gratefully acknowledged.

2 North Island

2.1 Waikato (Arapuni and Karapiro)

The Waikato River is the longest river in New Zealand and runs for 425km through the central North Island. It rises in the eastern slopes of Mt Ruapehu, joins the Tongariro River system and then empties into Lake Taupo. Water is then discharged from Lake Taupo through a series of eight hydro-electric dams along the Waikato River. These are (in downstream order): Aratiatia; Ohakuri; Atiamuri; Whakamaru; Maraetai; Waipapa; Arapuni; and Karapiro (Figure 2.1) and were all constructed between 1929 and 1971. Approximately 4000GWh is produced by the Waikato HEPS annually.

The flow that each dam receives can be broken into two components:

- The controllable flow released from the Lake Taupo gates; and
- The tributary flow which enters the Waikato between Lake Taupo and the dam.

For the HMD flow files, tributary flow is calculated only at Arapuni and Karapiro. Flow records at Karapiro do not begin until 1947, earlier records have been simulated from the Arapuni record.

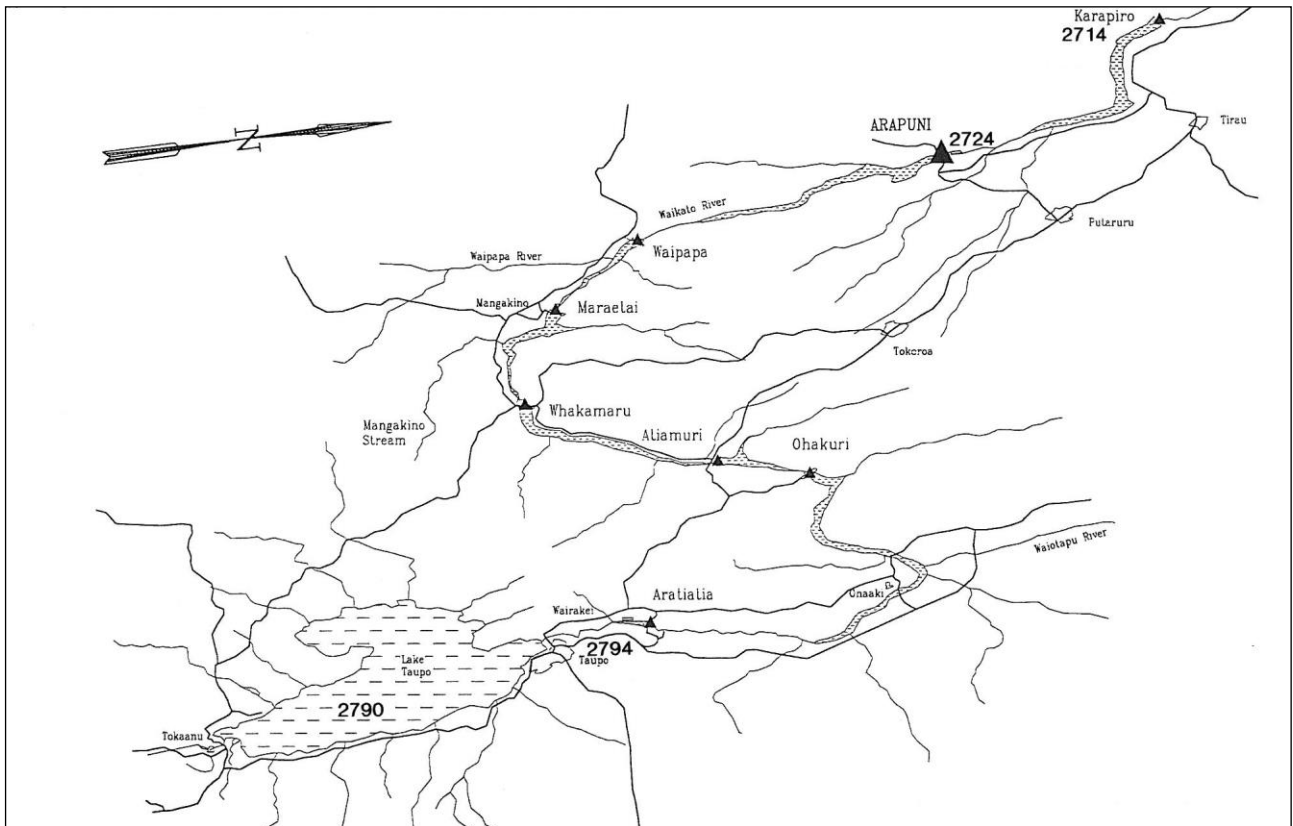


Figure 2.1: Waikato Power Development

2.2 Tokaanu, Rangipo and Taupo

The Tongariro Power Scheme, also known as the Tongariro Power Development (TPD), is located in the central North Island and generates approximately 1350GWh of electricity annually. The TPD utilises water from 36 rivers and streams using a complex system of tunnels and canals. Water is diverted from tributaries of the Rangitikei, Whangaehu, Whanganui and Tongariro Rivers which drain an area of 2600km² covering Ruapehu, Ngauruhoe, Tongariro and the western Kaimanawa Ranges.

There are four main sections of the scheme; the Eastern Diversion, the Western Diversion, the Tongariro section, and the Rotoaira section. The Eastern Diversion extends from the Wahianoa Aqueduct eastward to the Moawhango Dam, and then north to the discharge point of the Moawhango Tunnel at the Rangipo Dam (Figure 2.1). The Mangaio Power Station is located in the Eastern Diversion and was commissioned in 2008. It has a total capacity to produce 1.8MWs of electricity.

The Western Diversion begins at the Whakapapa River where water is routed north-east via tunnels into Lake Te Whaiiau. Water is also diverted from the Whanganui River (Figure 2.2). From Lake Te Whaiiau water is discharged into Lake Otamangakau, which in turn is discharged into Lake Rotoaira via the Wairehu Canal.

The Tongariro section begins at the Waihohonu intake and extends north to the Poutu intake, and the west to the Poutu Dam. The Tongariro River creates a head pond for the Rangipo Power Station which is located 63m underground. This power station was commissioned in 1963, and has two 60MW generators producing a total capacity of 120MW.

The Rotoaira section is the northern most section and includes Lake Rotoaira, Tokaanu intake and tunnel, Tokaanu Power Station, and the Tokaanu tailrace. The lake acts as a reservoir for the Tokaanu Power Station which has a 240MW capacity, via four 60MW units. The tailrace discharges water into Lake Taupo, west of the Tongariro delta.

Figure 2.3 lists the mean recorded flows for the contributing Tongariro Power Development sites.

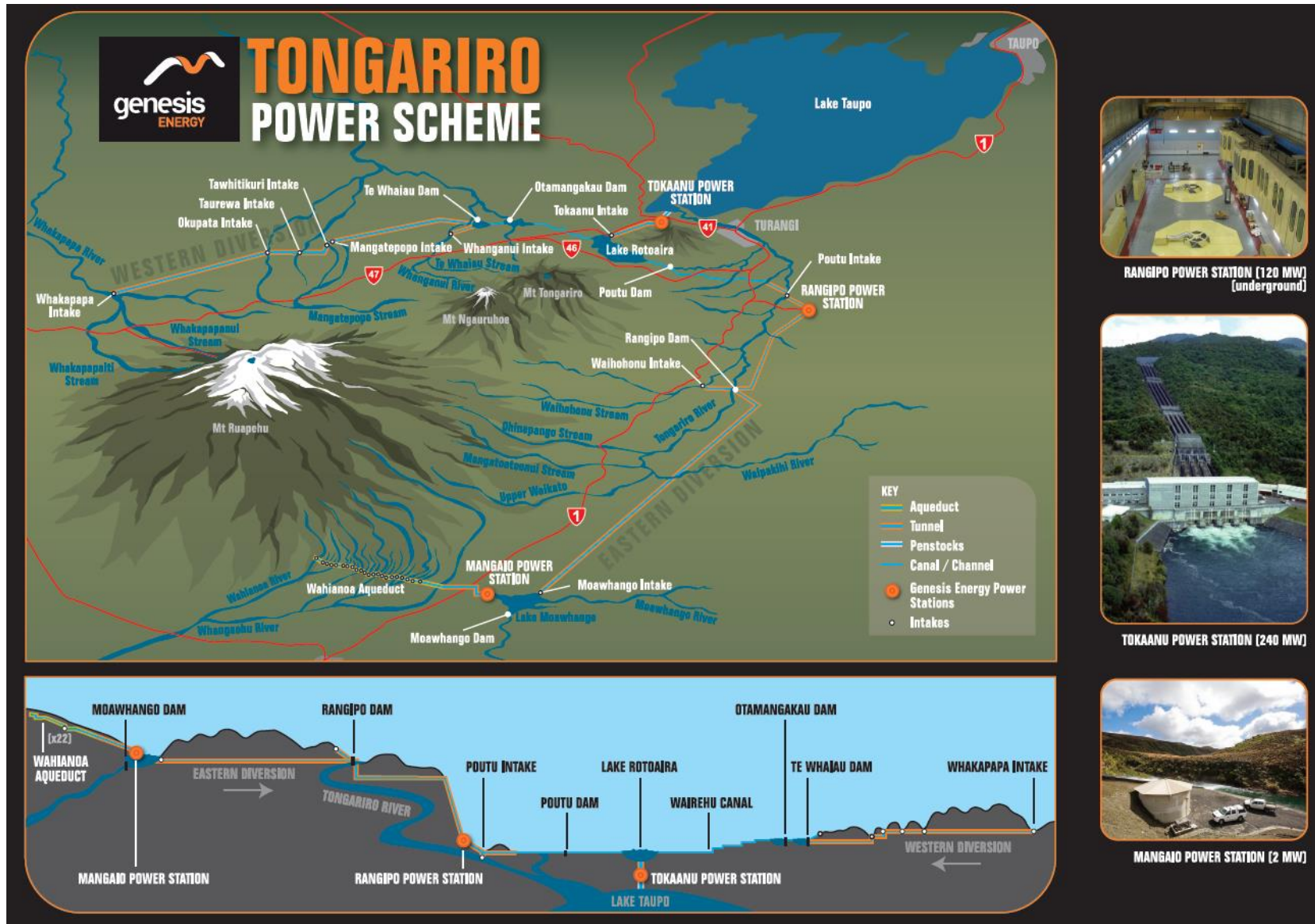


Figure 2.2: Layout of the Tongariro Power Development and its various components (from genesisenergy.co.nz)

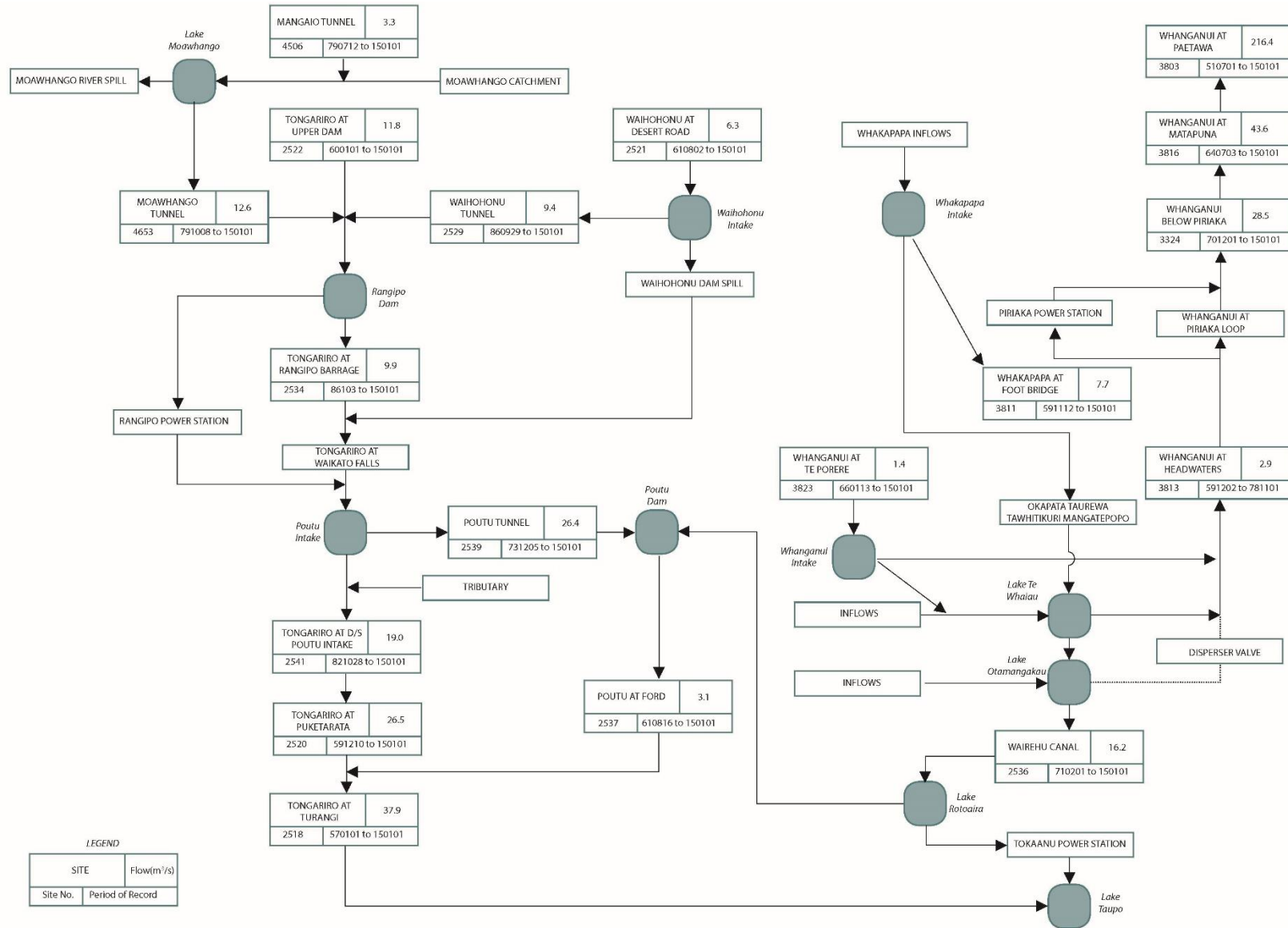


Figure 2.3 Mean flows for available periods of record at Tongariro Power Development sites

2.3 Waikaremoana

The Waikaremoana Power Scheme is located between Te Urewera National Park and Wairoa; along the upper 7km of the Waikaretaheke River. The scheme comprises of three power stations; Kaitawa (36MW), Tuai (60MW), and Piripaua (42MW). Water is taken from Lake Waikaremoana via tunnels to Kaitawa Power Station before being discharged into Lake Kaitawa (Figure 2.4). Water is then passed through the Tuai Power Station and discharged into Lake Whakamarino. Then, water is conveyed via a tunnel to Piripaua Power Station and is discharged into the Waikaretaheke River.

Inflow records for Lake Waikaremoana go back to 1929. Inflows to individual scheme components are not available and so inflows are based on flows at Tuai Power Station. These include leakage but do not include water spilt at the Kaitawa gates which is not 'recaptured' at the Whakamarino canal intake.

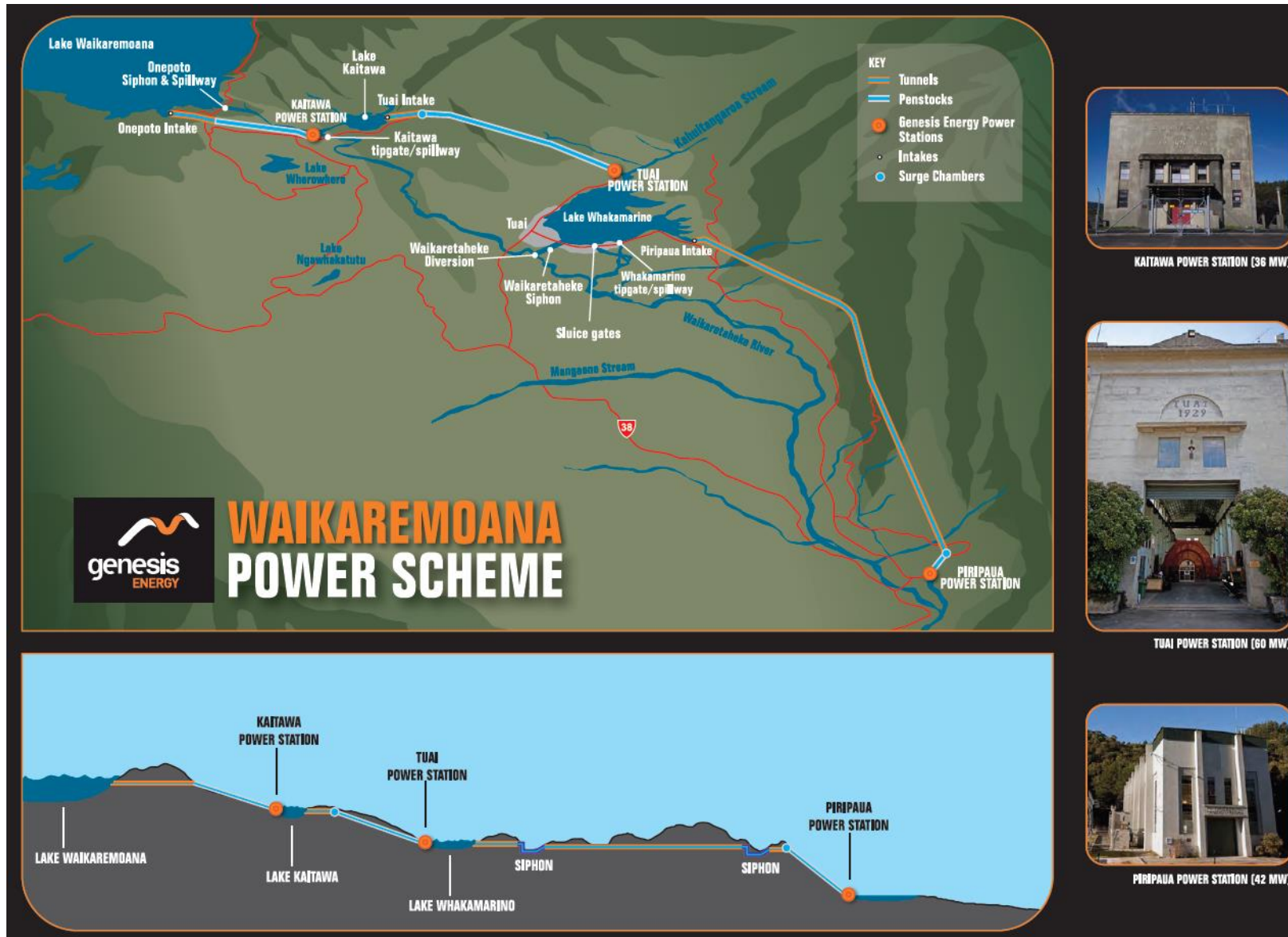


Figure 2.4: Flow diagram for Waikaremoana (from genesisenergy.co.nz)

2.4 Matahina

The Matahina Power Station is located on the Rangitaiki River in the central North Island (Figure 2.5). The station was commissioned in 1967, and has an average annual generation of 290GWh. Matahina Dam is 86m high and is the largest earth dam of its type in the North Island. This earth dam, which retains a relatively small storage reservoir was extensively refurbished between 1987 and 1988 after the Edgecombe earthquake. The lake was drawn down again in June 1996, and refurbished in 1997 to comply with international performance standards for a 7.2 Richter scale, or a 1 in 3800 year seismic event.

The Wheao and Flaxy Power Scheme utilises water from the Rangitaiki River, Wheao River and Flaxy Creek. The Wheao and Flaxy power stations are located upstream of the Matahina Power Station (Figure 2.5 and Figure 2.6). The Aniwhenua Power Station is also located upstream of the Matahina Power Station.

Flows are available for the Matahina Power Station since it's commissioning in 1967. From 1948 to 1967 flows are simulated from the Rangitaiki River at Te Teko, and prior to 1948 from Lake Taupo outflow.

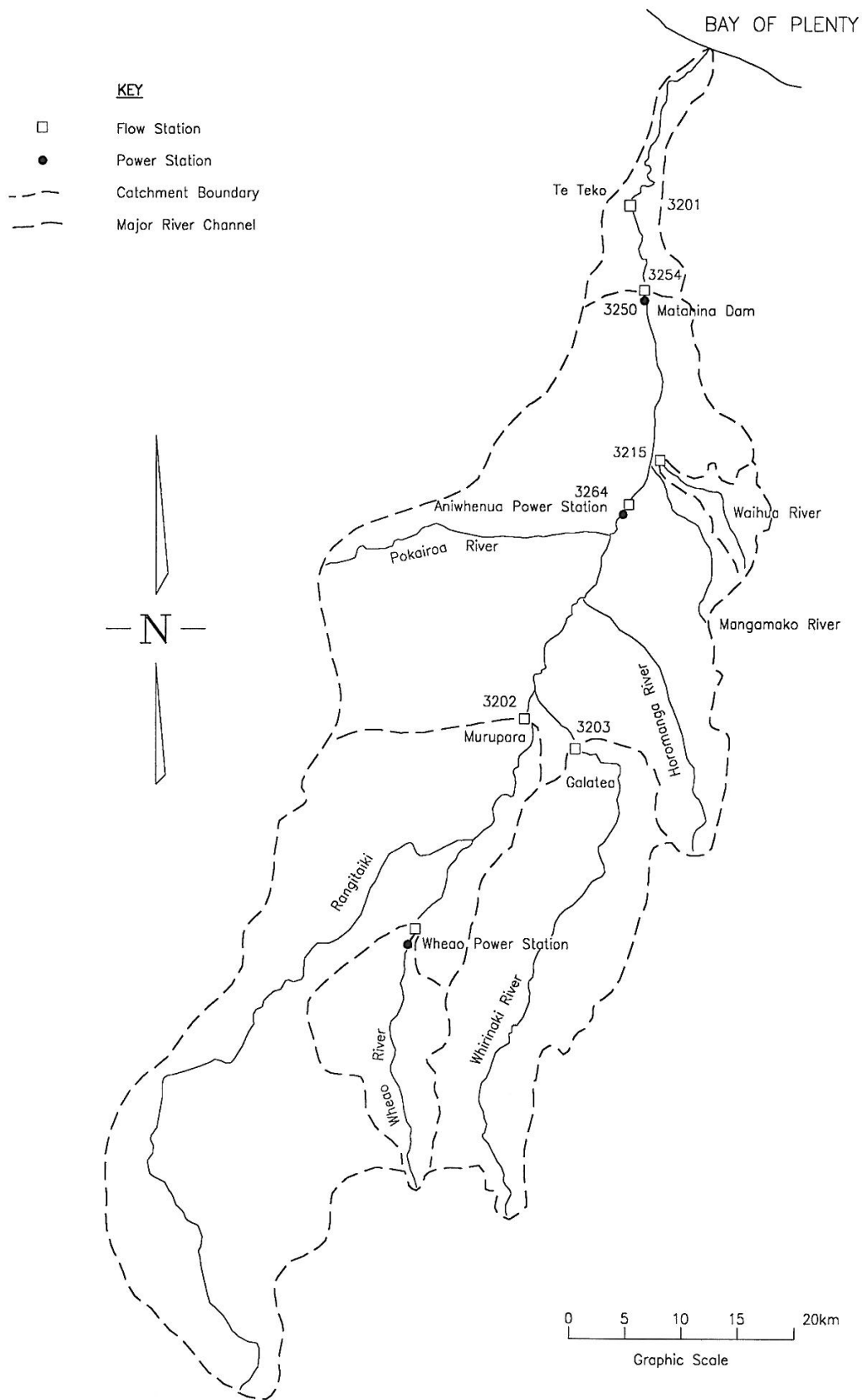


Figure 2.5: Rangitaiki catchment and Matahina Dam

2.5 Wheao and Flaxy

The Wheao and Flaxy Power Scheme is located in the Bay of Plenty and was commissioned in 1982. The scheme utilises water from the Rangitaiki River, Wheao River and Flaxy Creek and generates approximately 111GWh annually. The scheme comprises two power stations; the Flaxy (2.1MW) and Wheao (12MW) which discharge into the Rangitaiki River. This water also goes through the Aniwhenua and Matahina Power Stations downstream (Figure 2.5).

The diverted water flows through a 4.7km open canal into the Wheao penstock intake (Figure 2.6). When a lot of power is needed, the Flaxy Power Station supplements supply. A complex arrangement of canals, tunnels and pipelines feed the water from the upper Wheao River and Flaxy Creek to the Flaxy Power Station. Two Norwegian designed water driven turbines and generators produce 12,000KW each. Above the power station are the two penstocks through which the water drops 126m down a rock wall at up to 45° to the generators inside the power station.

Figure 2.6 shows the Wheao/Flaxy Power Stations and the associated flow recorders on, or in the vicinity of, the Wheao/Flaxy Power Stations. Table 2.1 shows the site number, site name and the length of record existing for the sites.

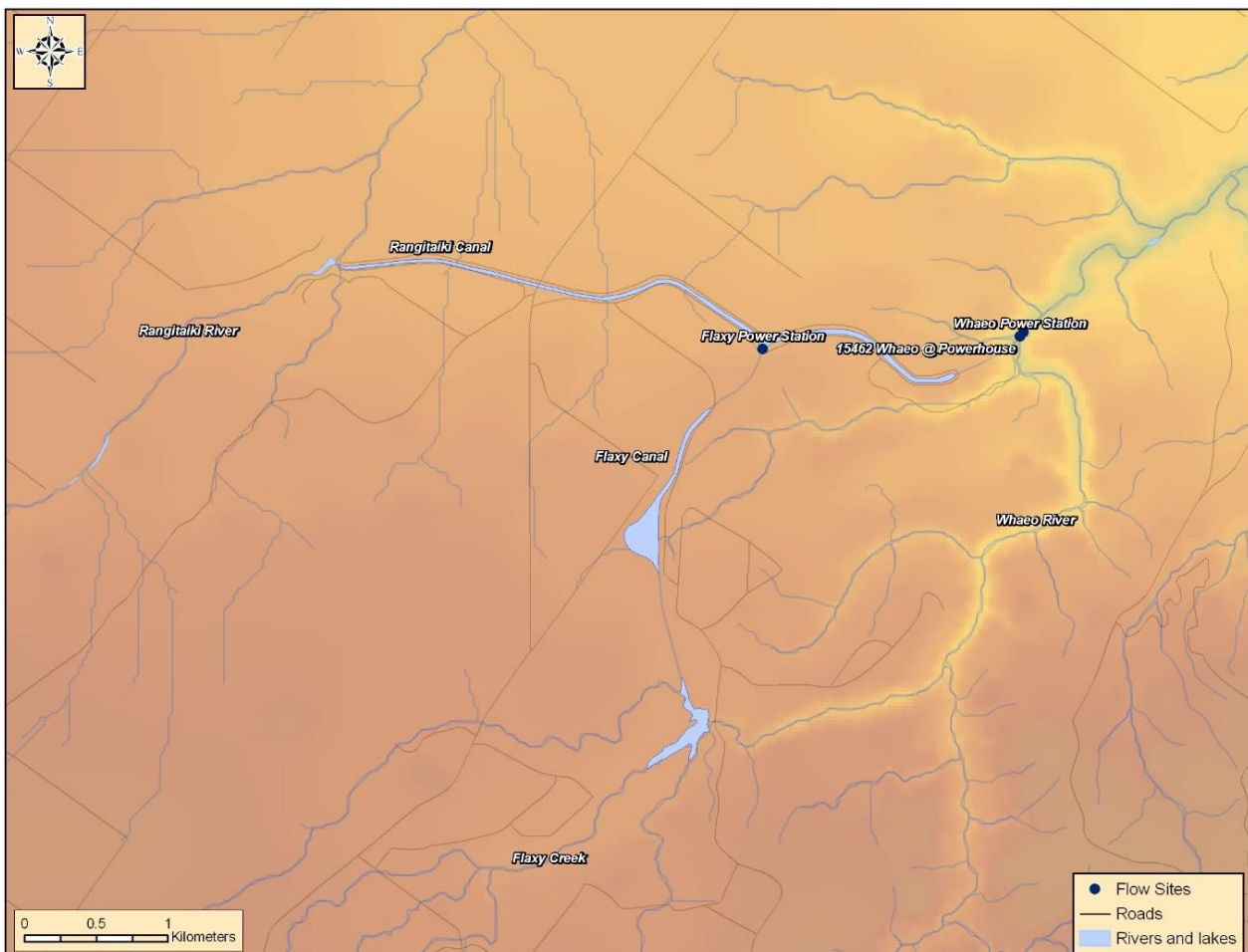


Figure 2.6: Wheao Power Station location diagram

Table 2.1: Flow recording stations in the vicinity of the Wheao/Flaxy power stations

Site Number	Site Name	Record Length
15462	Wheao at Powerhouse	Nov 85 to Sep 98
15408	Rangitaiki at Murapara	Jun 48 to present

2.6 Mangahao

The Mangahao Power Station is located near the town of Shannon in the Manawatu district of the North Island. It makes use of the Mangahao River, through a series of tunnels and pipelines totalling 4.8km, in the Tararua Ranges. The Mangahao Power Scheme was commissioned in 1924 and at 20MW installed capacity, was the largest power station in the country at the time.

In 1994 the station underwent major refurbishment and now has an annual generation of approximately 126GWh. The scheme incorporates three storage reservoirs, two of which are on the Mangahao River (Figure 2.7). The third reservoir is on the Tokomaru Stream, a tributary of the Manawatu River, but joins it on the western side of the Tararua Range. There is 271m of head for this scheme. The tailrace from the Mangahao Power Station discharges into the Mangaore Stream.

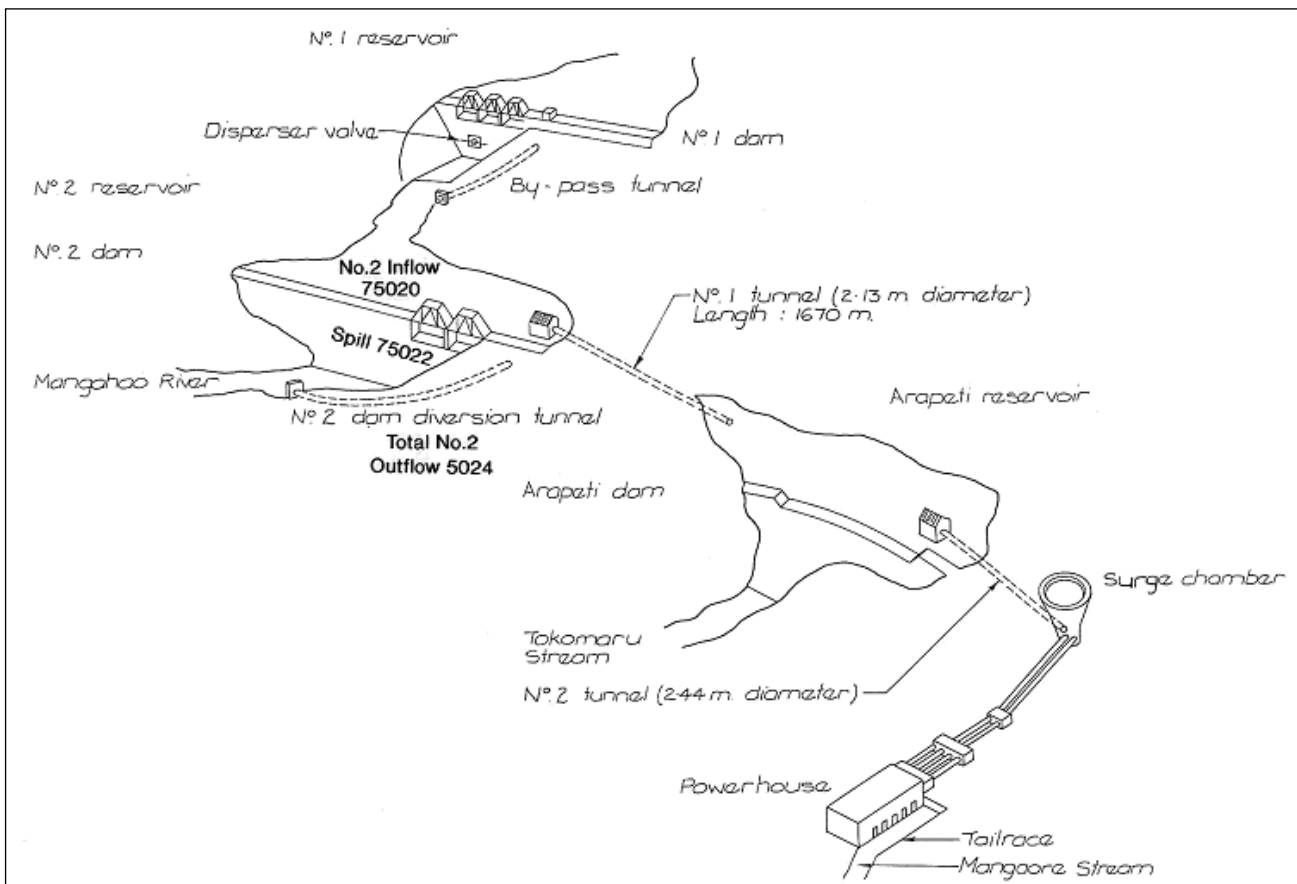


Figure 2.7: Schematic layout of Mangahao Power Scheme

2.7 Patea

The Patea Power Scheme is located on the Patea River in the central North Island. It has an 82m high compacted earth-fill dam creating Lake Rotorangi, New Zealand longest man-made lake (46km). The power station began producing power in 1984, and has an average annual output of 108GWh. The scheme has three Francis turbine and generator sets, and one residual flow generator.

Figure 2.8 shows the associated flow recorders on, or in the vicinity of, the Patea River. Table 2.2 shows the site number, site name, and the length of record existing for these sites.

Possible Mangaehu Diversion

The Patea River originates on the eastern side of Mt Taranaki, flows through Stratford and into the inland hill country where it is joined by a major tributary, the Mangaehu Stream.

The upper reaches of the Patea River are not as deeply incised as the middle reaches; particularly upstream of Lake Rotorangi behind Patea Dam. The river channel is incised about 30m at this location. This creates a possible opportunity for a storage dam with an overall height up to 64m, approximately 1.7km upstream of the Mangamingi Bridge. A reservoir area of 3.9km² with an impoundment height of 50m and an installed capacity of 18MW could possibly generate approximately 79GWh p.a. (50% plant factor).

Table 2.2: Flow recording stations in the vicinity of the Patea Power Station

Site Number	Site Name	Record Length
34307	Patea at Mangamingi	Apr 75 to May 84
34309	Mangaehu at Bridge	Jan 78 to present
34305	Patea at McColls	Nov 86 to Jul 95
34308	Patea at Skinner Road	Feb-78 to present

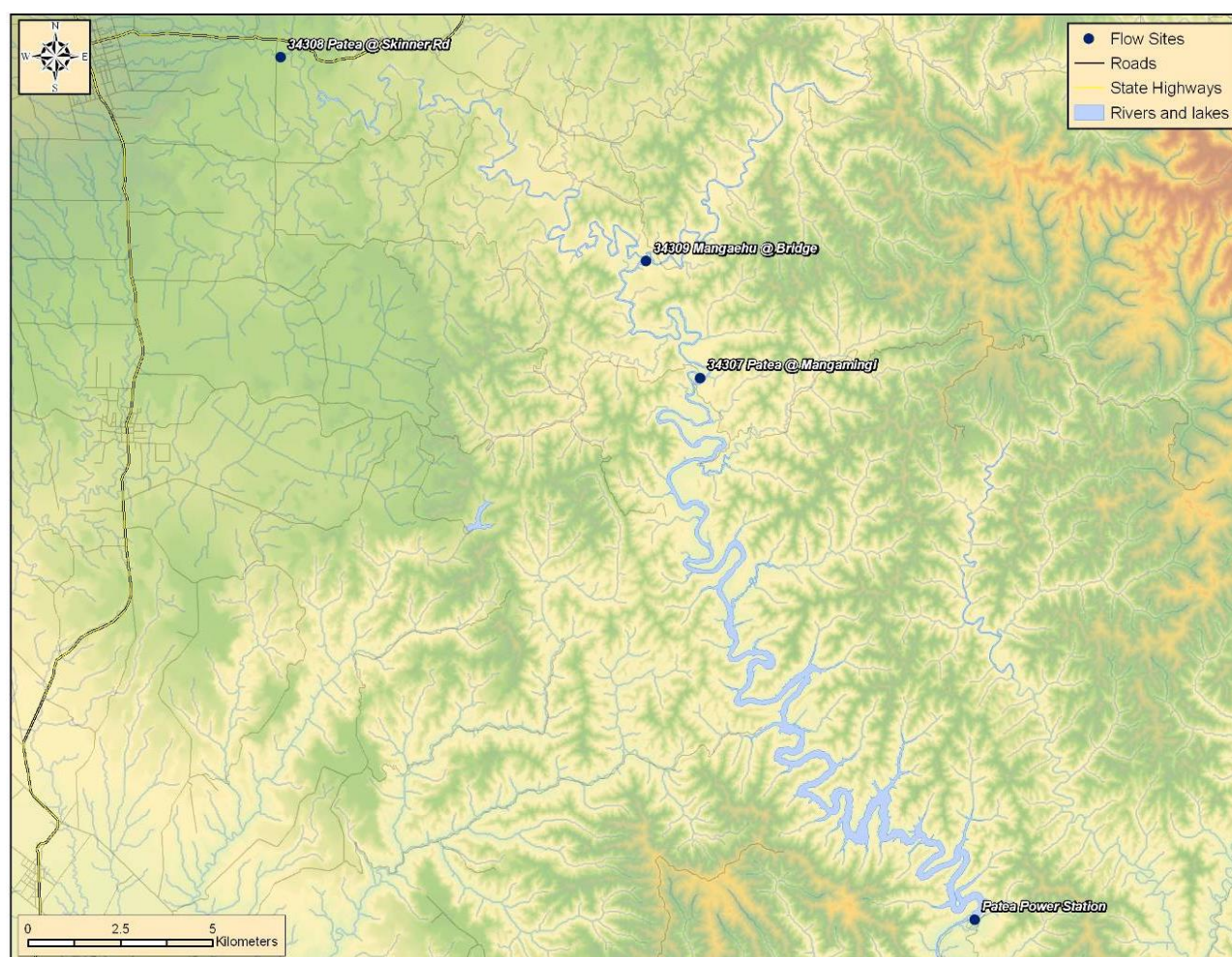


Figure 2.8: Patea River and key locations

2.8 Kaimai

The Kaimai Power Scheme is located in the Wairoa River catchment in the North Island of New Zealand. The scheme consists of four power stations; Lloyd Mandeno Station (commissioned in 1972), Lower Mangapapa Station (commissioned in 1979), Ruahihi Station (commissioned in 1981) and Kaimai 5 Station (commissioned in 1994), with an average annual output of 167GWh.

The electricity generation in the Wairoa River catchment, however, began in 1915 with the construction of a 150KW plant at Omanawa Falls. Capacity was increased to 750KW in 1921. This was followed in 1925 by the commissioning of the 2700KW McLaren Falls Station, which was decommissioned in 1989. A bypass was subsequently installed to allow the continued release of recreational flows into the Wairoa River on certain days each year for activities such as rafting and canoeing.

The Ruahihi Power Station is situated on the Wairoa River, adjacent to SH29. Ruahihi was commissioned in 1981 and is the third and largest station in the overall scheme (20MW). Failure of the feed canal later that year required major rebuilding. The station was recommissioned in 1983.

Lake McLaren is the reservoir for this station which is linked to the power station by a canal. Lake McLaren was formed in 1925 by the construction of a 26m high concrete arch dam across the lower Mangapapa River to operate the now decommissioned McLarens Falls Power Station. Water passes through a gated inlet structure into a 2.5km canal. The construction of the canal involved moving 2,400,000m³ of material to depths up to 46m below original ground level, making it one of the larger canals in New Zealand. The depth of the water in this canal is 6m, and the width at normal operating level is 30m. Flow velocities are up to 0.9m per second depending on machine settings and water levels.

Transition from the canal to penstock is a forebay which has screens, a cleaner, and control gates. Downstream of the forebay is a 1.6km low pressure conduit leading to twin high pressure penstock pipes down the escarpment and under State Highway 29 into the power house. There are two generating sets in the station, each producing 10,000KW at 86.4m head of water. Operating speed is 500rpm and the average energy produced is 75.6GWh per annum.

Figure 2.9 shows power stations and the associated flow recorders on, or in the vicinity of the Kaimai Power Scheme. Table 2.3 shows the site number, site name, the length of record existing for each flow site.

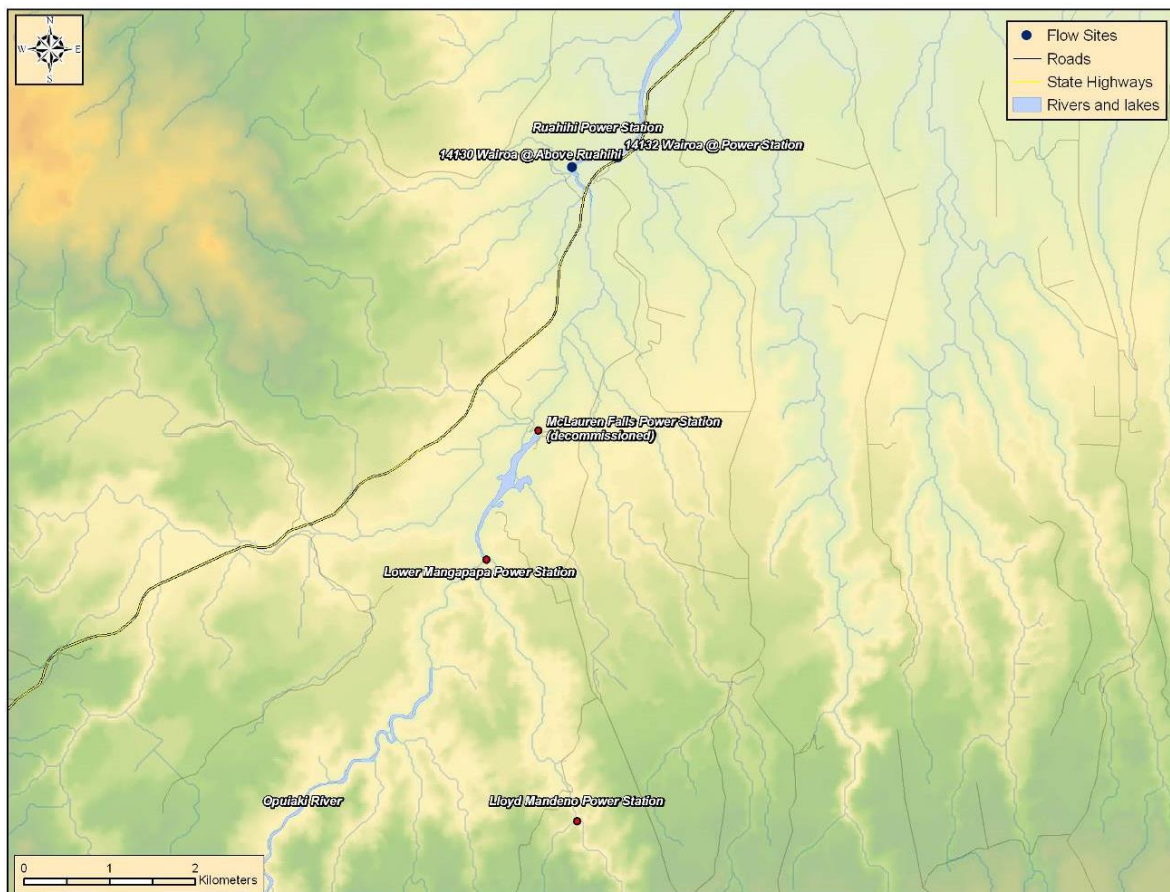


Figure 2.9: Kaimai Hydro Power Scheme and key location

Table 2.3: Flow recording stations in the vicinity of the power station, including possible power station records

Site Number	Site Name	Record Length
14130	Wairoa at Above Ruahihi	Sep 90 to present
14132	Wairoa at Power Station	Jul 93 to present

2.9 Ngaruroro River, Hawke's Bay

The Ngaruroro River is located in the eastern North Island and runs for 164km. The upper-Ngaruroro drains areas of Kaweka Forest Park and is used for trout fishing, rafting and tramping. The Ngaruroro empties into Hawke's Bay just north the town of Clive.

In a previous report (Additional SPECTRA Investigations September 2005), five possible hydro-power schemes were identified along the Ngaruroro River. HMD series have been developed at three of the flow recording sites to represent flows at these schemes. HMD series have been created at Ngaruroro at Whanawhana, Ngaruroro at Kuripapango and Ngaruroro at Chesterhope Bridge. These sites are shown in Figure 2.10.

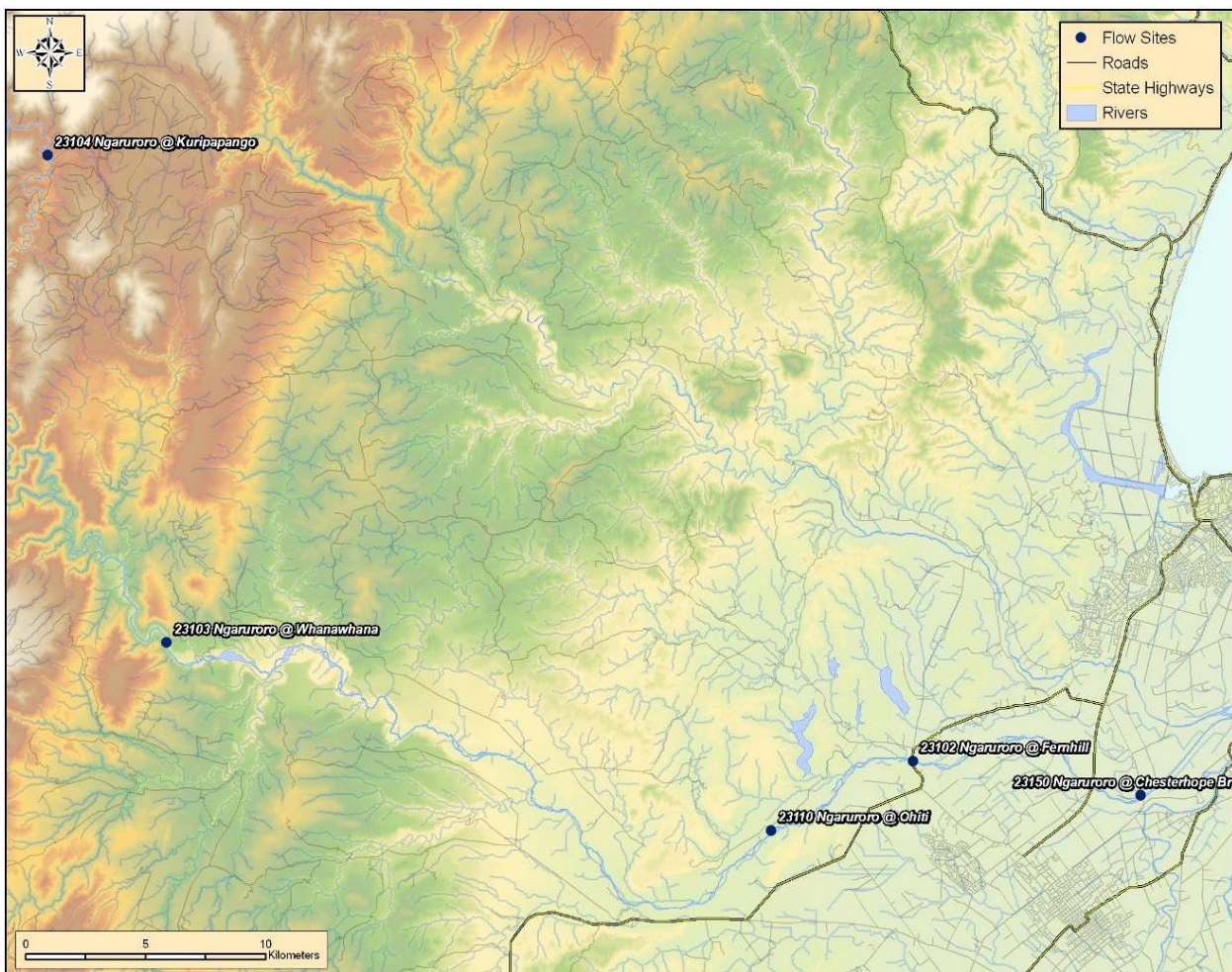


Figure 2.10: Ngaruroro River and key locations

2.10 Mohaka River, Hawke's Bay

The Mohaka River is located in the central region of the Hawke's Bay and drains the Kaweka and Kaimanawa Ranges. The catchment area is approximately 2400km² and the river length is 172km. This river drains very steep and rugged landscape with many gorges, some as deep as 200m. A possible hydro-power scheme was identified in the lower reaches of the river, near Raupunga. An HMD series has been created at Mohaka at Raupunga which is shown in Figure 2.11.

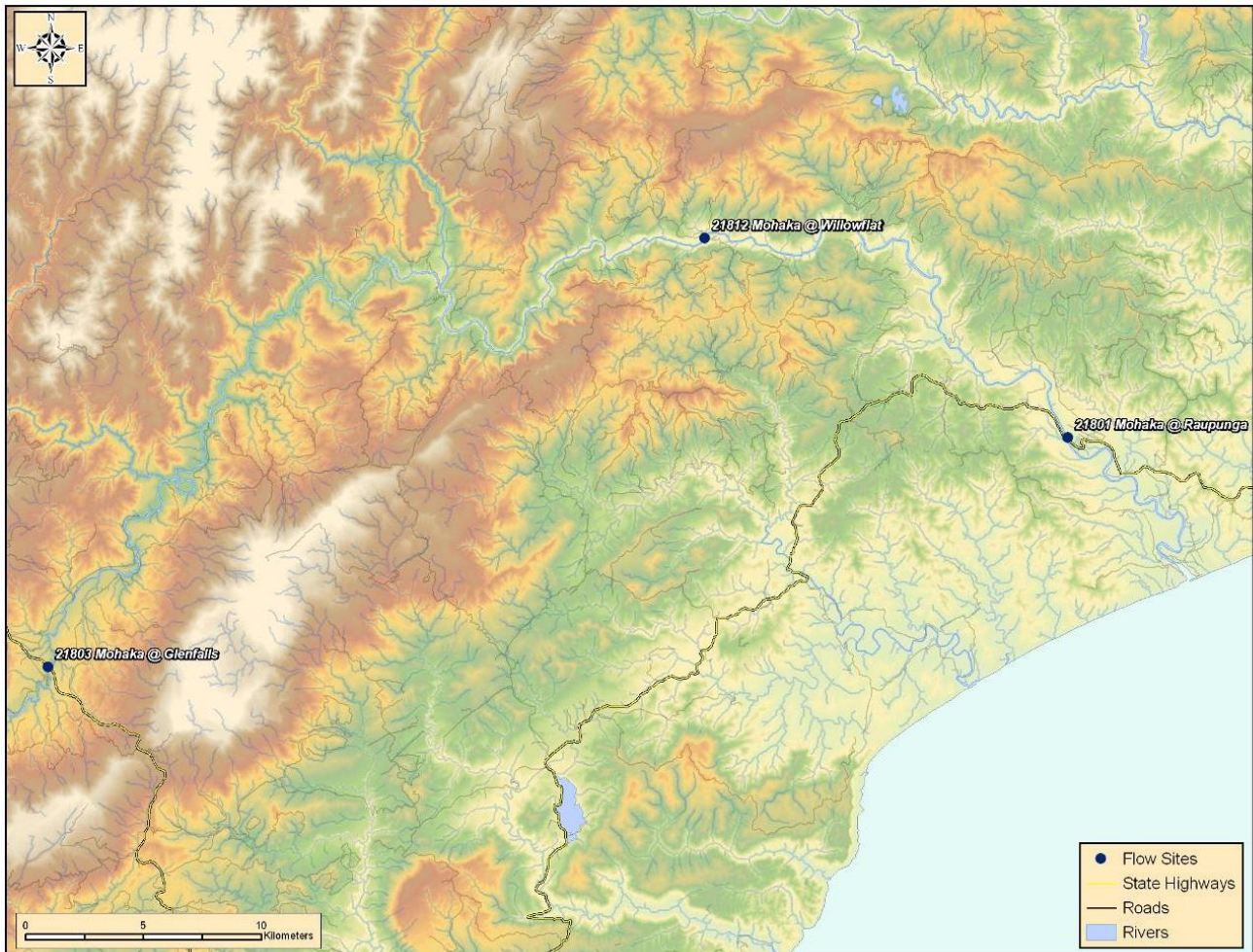


Figure 2.11: Mohaka River and key locations

3 South Island

3.1 Waitaki

The Waitaki Hydro Scheme consists of eight power stations from Lake Tekapo to Lake Waitaki (Figure 3.1 and Figure 3.2). This scheme started in 1904 when Mr PS Hay recognised the electricity potential of the

Waitaki Valley. Waitaki was the first dam built on the Waitaki River; the powerhouse was completed in 1934 after the dam was built. It has had a number of generators added over the years, the last in 1954 bringing the station to its present day capacity at 105MW.

Tekapo A Power Station was the second station built as part of the Waitaki Hydro Scheme. Construction started in 1938, paused in 1942 for the war, and was finally commissioned in 1951. It generates an average of 160GWh per year. The control gates were constructed in the 1940s to regulate the Tekapo water outflows to the Waitaki River. Benmore Power Station was commissioned in 1965 and is the country's second largest hydro station after Manapouri. It currently has a capacity of 540MW. Construction began on Aviemore Power Station in 1962 and is built from both concrete and earth as it is built across a fault line.

The Upper Waitaki scheme began in 1970 and continued until 1985 when the last station, Ohau C, was commissioned. During this period, four stations were constructed along with two dams and six canals (totalling 5.6km).

Construction of the Ohau A Power Station, which is situated on the man-made Pukaki-Ohau canal, began in 1971 and it was commissioned in 1979. Tekapo B was the second station to be built in the Upper Waitaki Hydro Scheme and was commissioned in 1977. Its current capacity is 154MW. Lake Ruataniwha was built between 1978 and 1981 and is the newest lake in the Waitaki Basin; it is also completely man-made. Water from Lake Ruataniwha is directed through a canal to Ohau B and C Power Stations. These 'twin' stations have the same generating capacity and use similar equipment. Each station produces approximately 958GWh of energy a year. Ohau B was commissioned in 1984, and Ohau C in 1985.

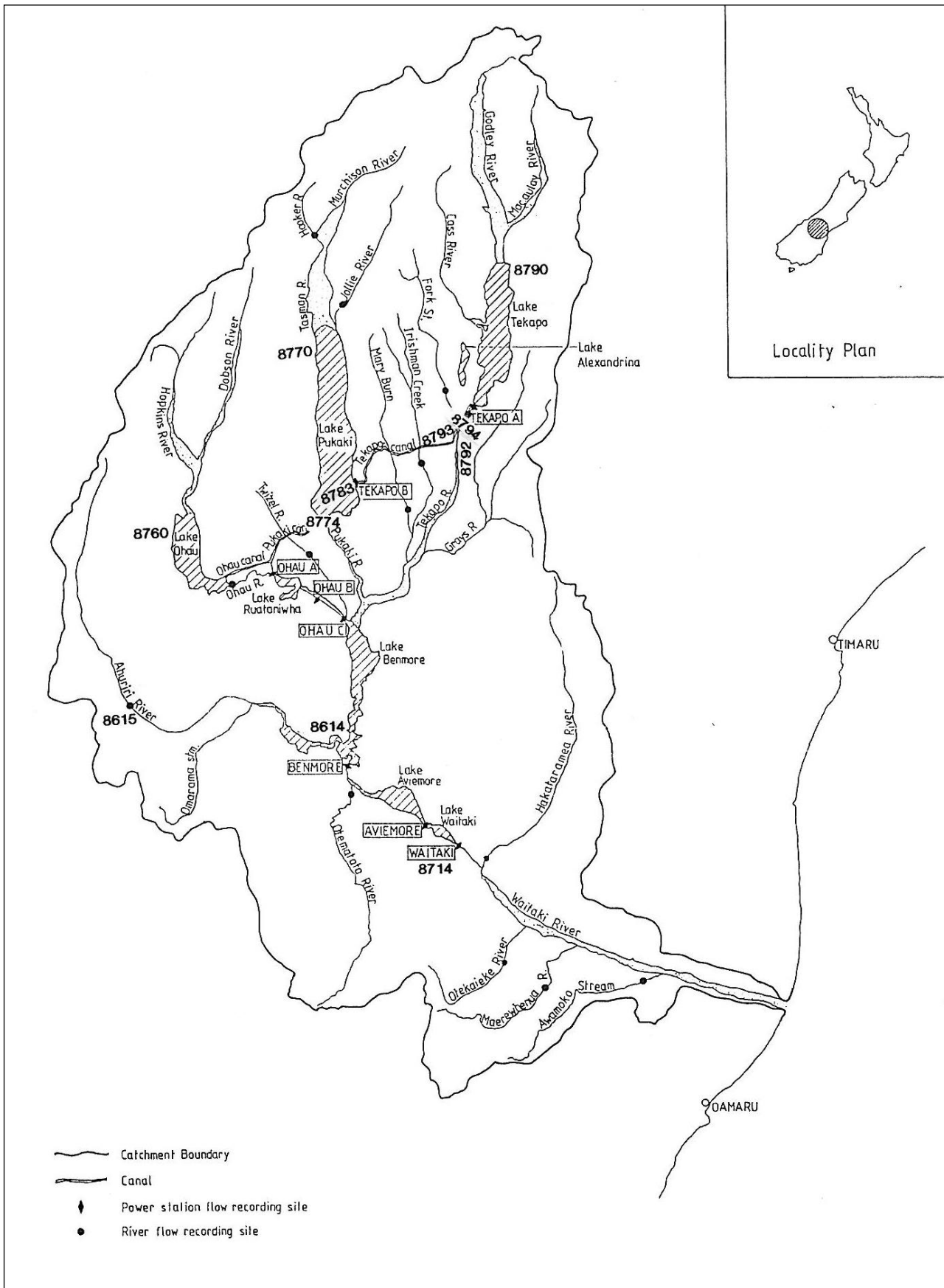


Figure 3.1: Waitaki hydro scheme

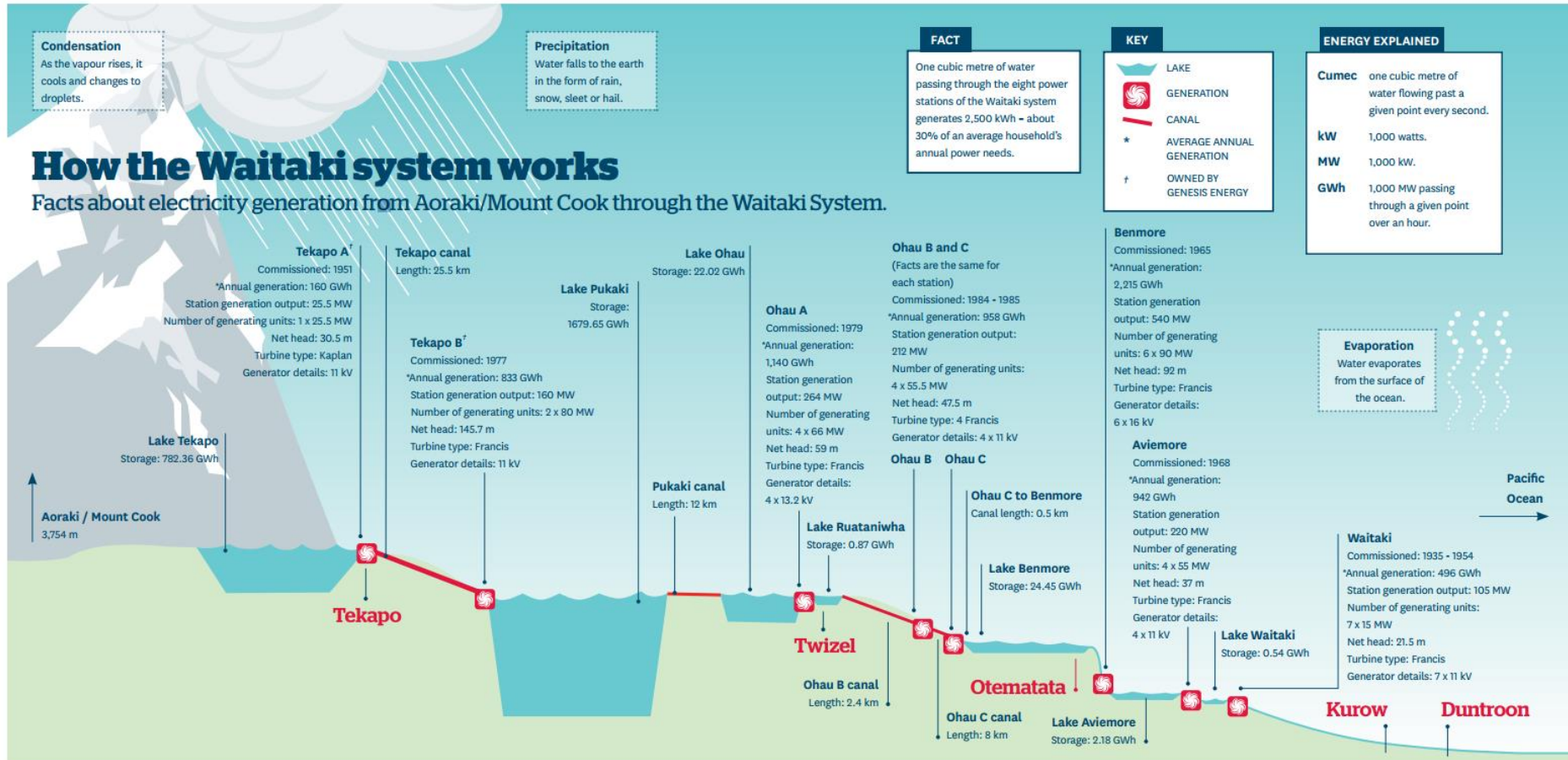


Figure 3.2 The Waitaki hydro scheme and its various components (from www.meridianenergy.co.nz)

3.2 Manapouri

Manapouri is a hydro power station located in Fiordland National Park in the South Island. It is the largest hydro-electric power station in New Zealand. It is located underground with the seven (122MW) generating units housed 200m below the lake surface. Construction started in 1964 and the station became fully operational in 1972 when the seventh generating unit was installed. In 1998, work began on a second tailrace tunnel which was completed in 2002. The station utilises the 230m drop between the Western Arm of Lake Manapouri and Deep Cove in Doubtful Sound 10km away to generate electricity.

The Manapouri Power Station utilises the storage capacity of both Lake Te Anau and Lake Manapouri via the Te Anau and Manapouri control structures. Lake Te Anau is the second largest lake in New Zealand (after Lake Taupo) with an area of 352km² (Figure 3.3). It receives the majority of its inflow from the Fiordland National Park portion of its catchment which has much higher rainfall than the adjacent Southland portion. Outflow from Lake Te Anau is via the Upper Waiau River which feeds into Lake Manapouri. Prior to control, the only outflow from Lake Manapouri was via the Lower Waiau River.

Before the control structure was built, about 67% of the water entering Lake Manapouri was from Lake Te Anau via the Upper Waiau River. The remainder was inflow from the local catchment. Since 1969, the natural inflows have been augmented by water from the Mararoa River. This was achieved by construction of a rock weir until 1976 when the Manapouri Lake Control (MLC) structure was completed.

A residual flow regime operates from the MLC for the Lower Waiau River. The regime is comprised of a seasonally adjusted minimum flow; with recreational and gravel flushing discharges within stipulated periods. The residual flow regime is outlined below.

- A continuous flow of not less than 12m³/s in the months of 1 May to 30 September, 14m³/s in April and October, and 16m³/s at all other times;
- Two flushing flows of not less than 35 m³/s for 24 hours released during the winter months of June and August;
- One flow of not less than 150m³/s for 24 hours will be provided during each of the periods, March to May, and September to November, in any one year; and
- Seven recreational flows of not less than 35m³/s, for 24 hours, released on the fourth Sunday of each month between October and April. Two of these flows may be increased to 45m³/s subject to compliance with lake level guidelines.

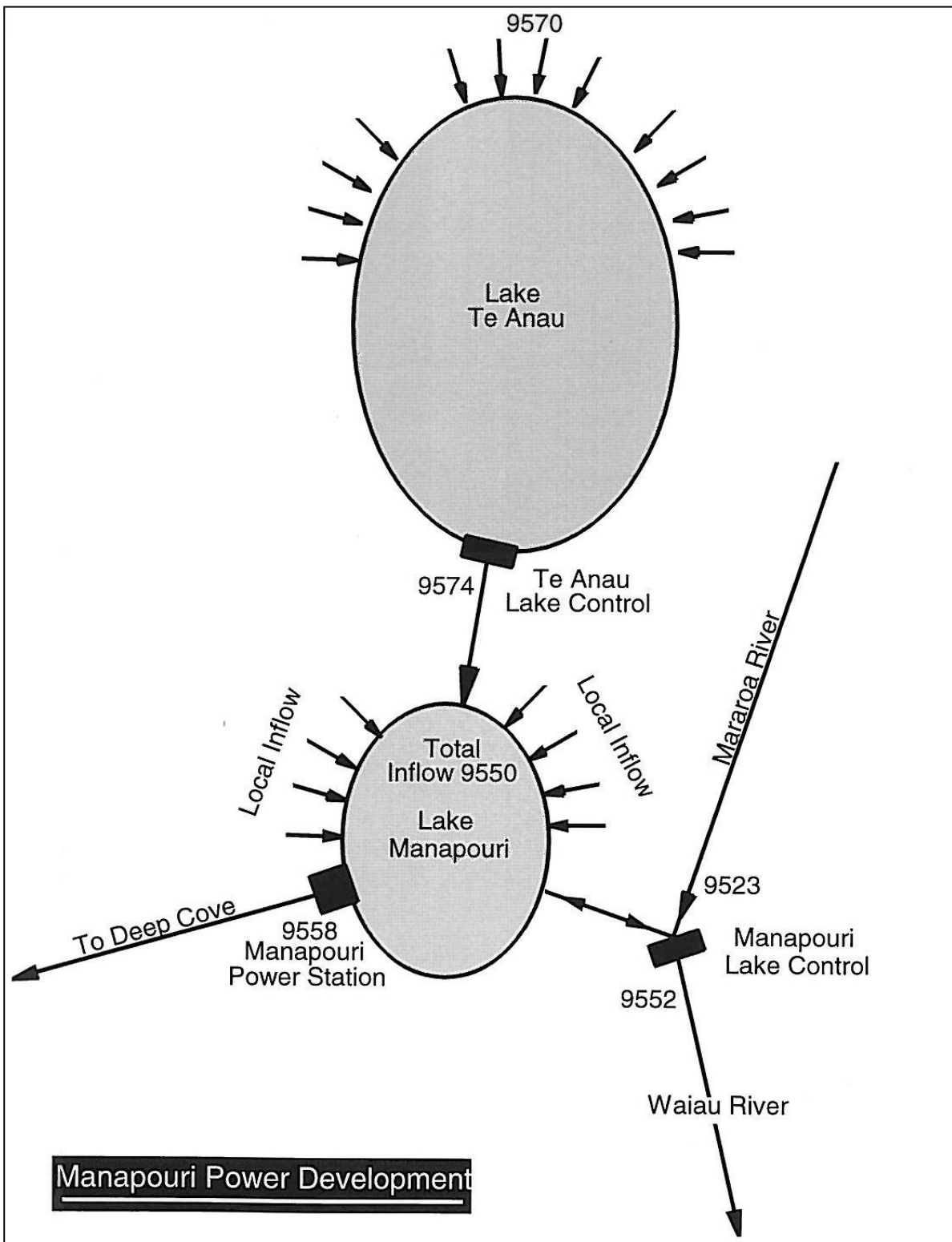


Figure 3.3: Layout of the Manapouri Power Development

3.3 Monowai

The Monowai Power Station is fed by the Monowai River from Lake Monowai in Southland, New Zealand. It is one of the earliest power schemes in the country: investigated in 1919; construction started in 1922; and it was commissioned in 1926.

Lake Monowai has an area of 31km² and is about 8.5kms from the power house; controlled by gates at the Monowai River outlet. Water flows down the river for about 6kms into a lake formed by a weir. The water is then diverted into a canal that is 856m long and arrives at a forebay area where a 1036m pipeline leads to a surge tank. From the surge tank, three penstocks take the water to the power house. Figure 3.4 shows a plan of the Monowai Power Development.

Initially there were two machines; a third was added in 1927. The station was overhauled in the 2000s and now contains modern turbines and plant, although the original buildings are still in use. The generating capacity has now increased to 7.6MW.

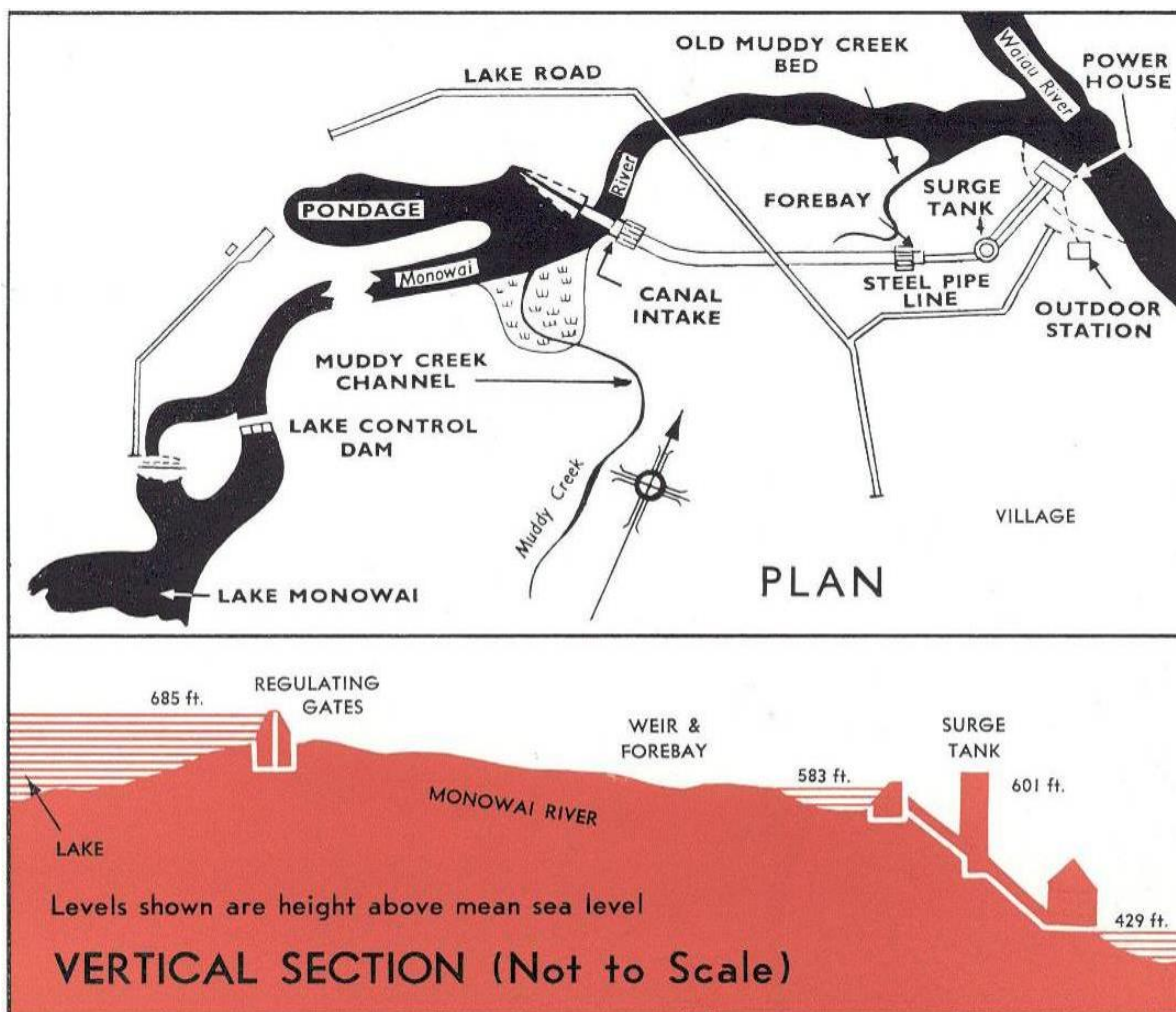


Figure 3.4: Monowai Power Development (original development)

3.4 Clutha

The Clutha Power Development is located on the Clutha River/Mata-Au, the longest river in the South Island. The river flows south-east 338km from Lake Wanaka in the Southern Alps to the Pacific Ocean south of Dunedin. The catchment is approximately 21,900km² in area.

There are two power stations on the Clutha River; Clyde and Roxburgh. The Roxburgh Power Station is situated just upstream of the confluence with the Teviot River (Figure 3.5). Much of the flow at Roxburgh comprises outflow from three lakes; the Clutha River flows from Lake Wanaka while two of its main tributaries, the Hawea and Kawarau Rivers, drain Lakes Hawea and Wakatipu respectively. Outflows from Wanaka are natural, and while Lake Wakatipu has Control Gates at its outlet, these were built for mining purposes and are seldom used. Therefore, only Hawea is considered to be controlled and outflows from the other two lakes are classed as tributary flows.

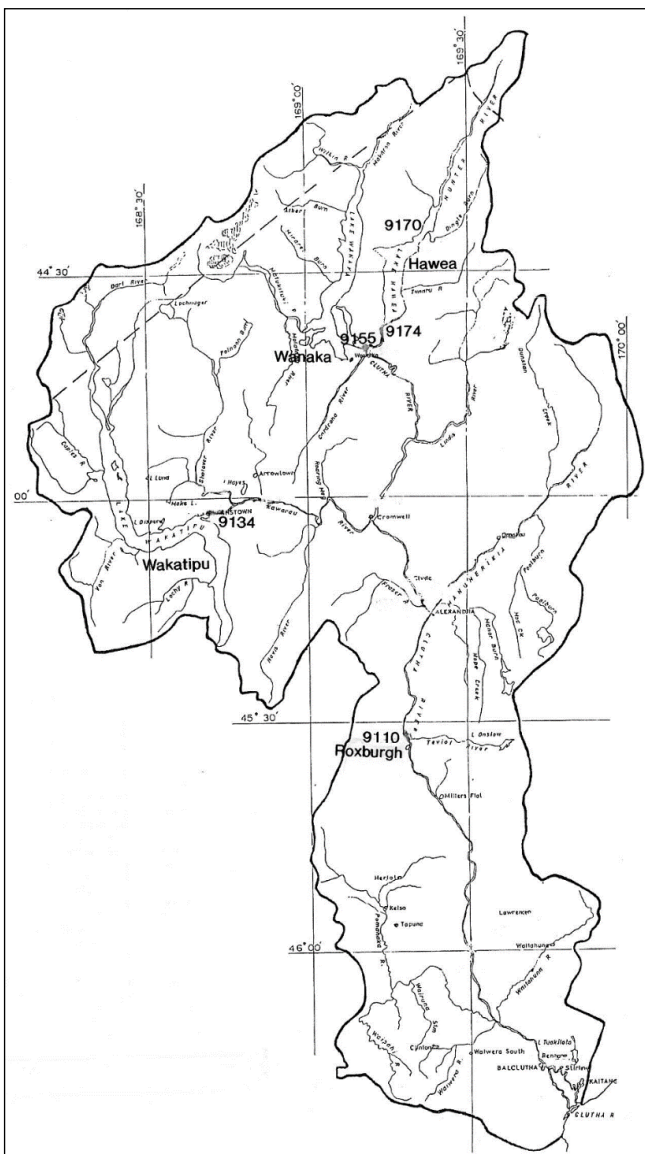


Figure 3.5: Clutha catchment

3.5 Cobb

The Cobb Power Station is located in mountainous country at the junction of the Takaka and Cobb Rivers, in the upper South Island. The Cobb Power Station was commissioned in 1944 and takes water from the Cobb River which drains the Tasman Mountains (Figure 3.6). Inflows to the reservoir are solely from the natural catchment.

The Cobb Power Scheme utilises a high head system. Water flows from the storage reservoir through a tunnel to the penstocks and a fall of some 600m to the power house. This is the greatest 'head' of any New Zealand power station. It enables 32MW of power to be generated from comparatively little water. Because of this high water efficiency, any errors in the extrapolated inflows will result in a magnified error in the estimated potential generation. The average annual output is 192GWh.



Figure 3.6 Cobb Power Station (taken from Trustpower.co.nz)

3.6 Coleridge

The Coleridge Power Station was the New Zealand Government's first major generation scheme; commissioned in 1914. Over its lifetime, it has been upgraded multiple times boosting average annual output to the present 270GWh.

Natural inflows to Lake Coleridge are supplemented by three diversions from adjacent rivers; the Harper River diversion was completed in 1922, the Acheron Diversion in 1932, and the Wilberforce Diversion in 1977. The scheme takes water from Lake Coleridge through two parallel tunnels to nine machines in the power house. Water is then released into the Rakaia River (Figure 3.7).

The natural outlet was through a small stream at the northern end of the lake. Outflows are now regulated by a Control Gate at the outlet. However, because of the ability to control inflows to the lake through the diversions, and the comparatively large capacity of the station, spill flows seldom occur. However, some spill flows have occurred as reverse flows through the Oakden canal.

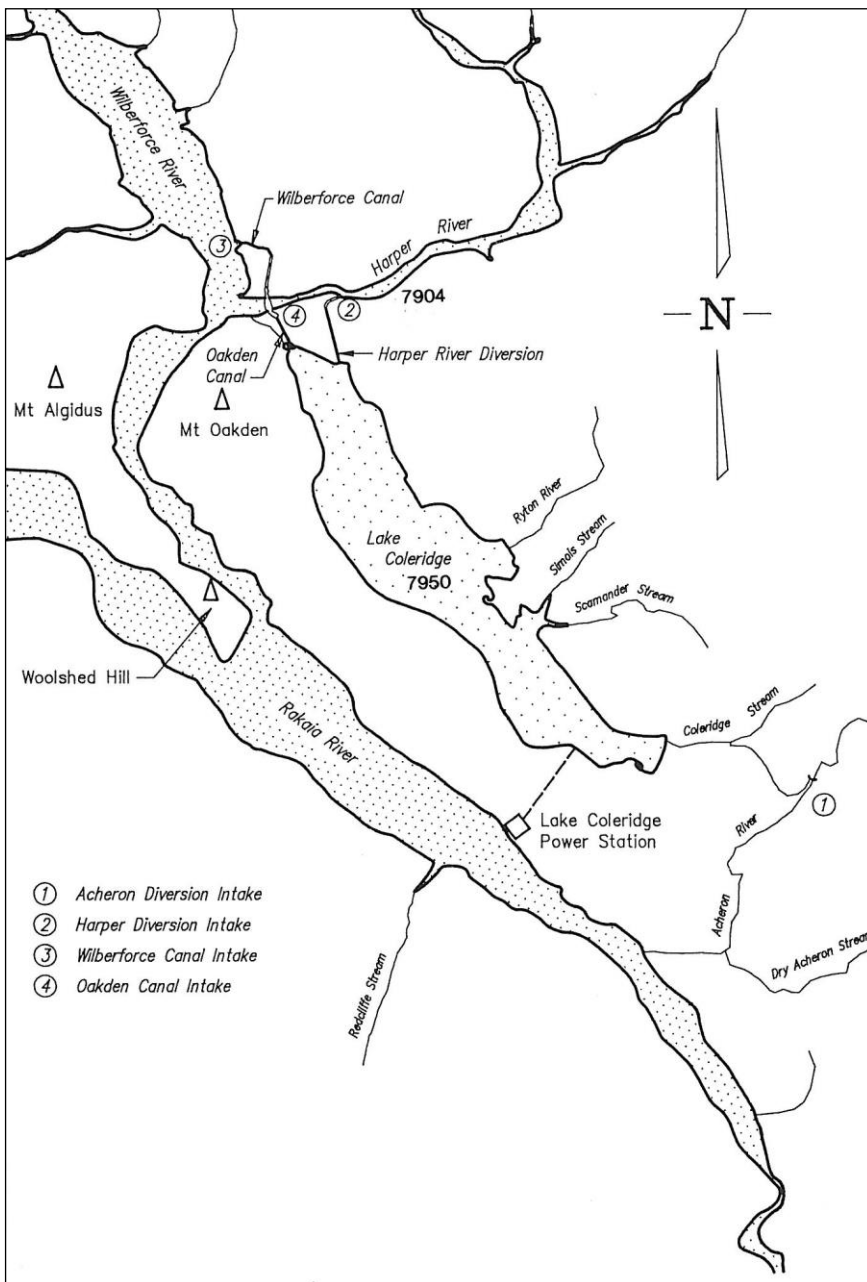


Figure 3.7: Coleridge Power Scheme

3.7 Highbank

The Highbank/Montalto Power Scheme is located in Canterbury in the South Island. The scheme draws water from the Rangitata River, via the 66km Rangitata diversion race which is also used for local irrigation. Irrigation takes priority in summer, when demand for electricity is lower. In winter, when electricity demand increases, and demand for irrigation water reduces, the water is used for power generation purposes.

The Highbank Power Station was built from 1939-1945 and had a major electrical and ancillary equipment upgrade in 2002. The Montalto Power Station was commissioned in 1982, and also utilises the Rangitata diversion race. The combined system of irrigation and generation causes generation volumes to vary but the approximate annual output for both stations is 98GWh.

Figure 3.8 shows the Highbank Power Station and the associated flow recorders on, or in its vicinity. Table 3.1 shows the site number, site name, and the length of record existing for the sites.

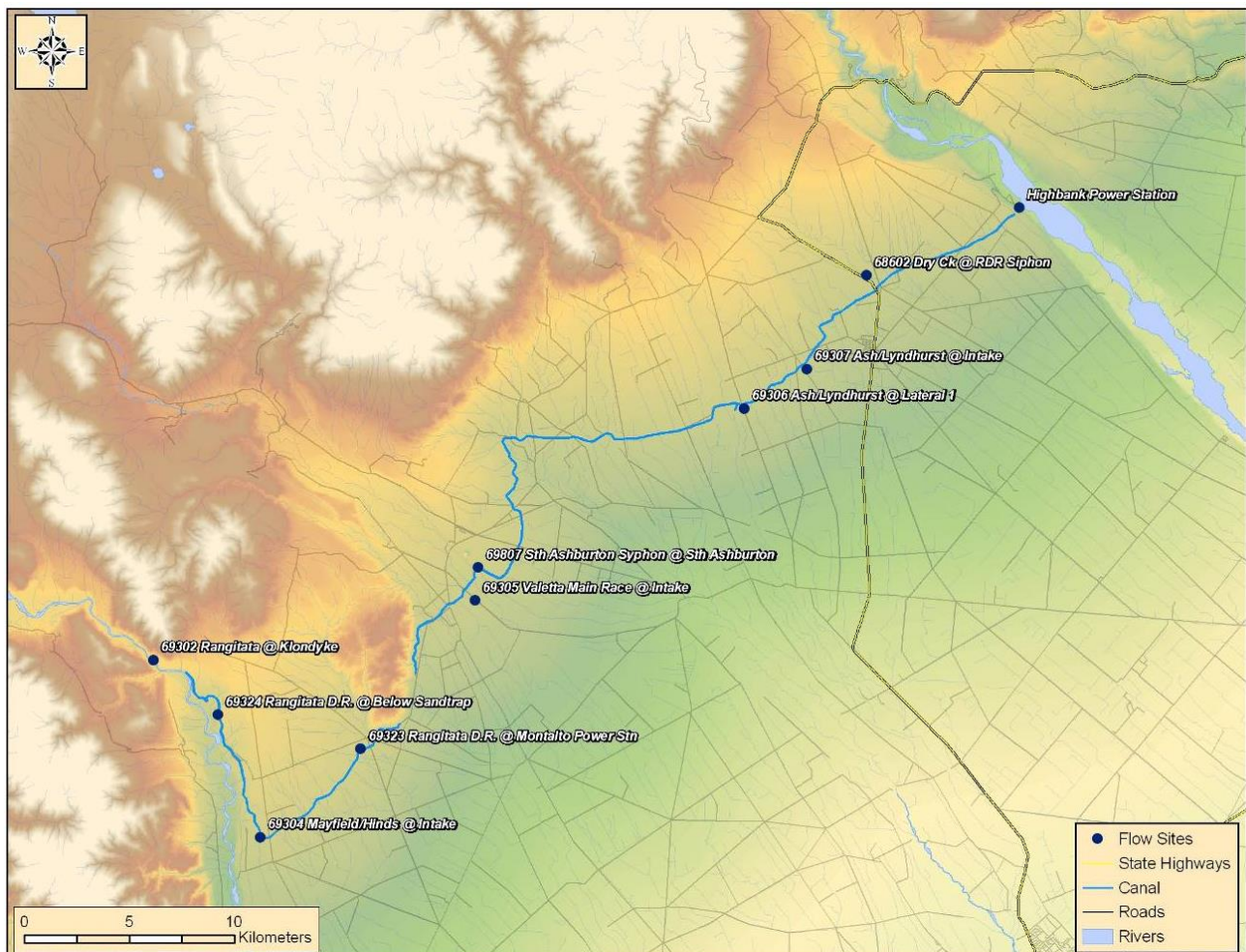


Figure 3.8: Highbank Power Station and key locations

Table 3.1: Flow recording stations in the vicinity of the Highbank Power Station

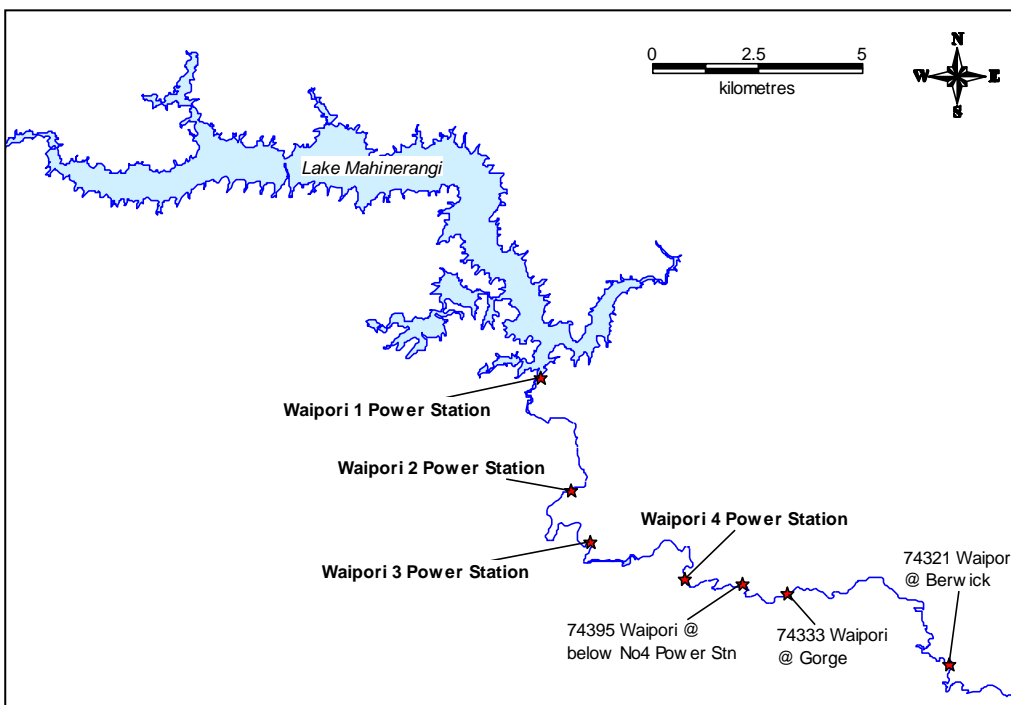
Site Number	Site Name	Record Length
7968	Highbank Power Station (Machine Output)	May 51 to Jul 98
77963	Highbank Power Station (Ext Flow Record)	Jan 30 to May 98

3.8 Waipori

The Waipori Power Scheme is located south west of Dunedin in the South Island. This power scheme was commissioned in 1907 to provide electricity to Dunedin. The scheme comprises a network of four dams and power stations on the Waipori River. It consists of underground tunnels, surge chambers, and an integration of vintage machinery and the latest generation equipment. Lake Mahinerangi is used as the scheme's reservoir.

The system has its headwaters high in the Lammerlaw Range. A network of water races, open channels, diversion tunnels, and pipelines feed the scheme beginning with the 2,000ha Lake Mahinerangi and Station 1 below the dam. Downstream, the waters pass through a further three power stations. Figure 3.9 shows the associated flow recorders on, or in the vicinity of, the Waipori Power Stations.

The topography of the Upper Waipori catchment provides the ideal setting for generating hydroelectricity. After a winding course, the river emerges into a valley 27km long but with only a 30m fall. This provides the ideal setting for Lake Mahinerangi. Below this valley is a narrow gorge, with a sharp decent of 165m over 4km. This gives the fall necessary for water to drive the turbines and results in a high quality, efficient power supply. The average annual output for Waipori Power Scheme is 192GWh.

**Figure 3.9: Waipori Power Scheme and gauging stations**

3.9 Grey River

The Grey River is located in the northwest of the South Island; it rises above Lake Christabel and runs westward for 120km before draining in to the Tasman Sea at Greymouth. Data for the Grey River is used for investigative work on the feasibility of a power station on the river. A proposed scheme involves diverting water from the Taramakau River into the Grey River, via a canal and the Arnold River (Figure 3.10). Other proposals have also included diversion of the Taipo River; however, the current HMD series does not include flow for the Taipo.

The flow site used on the Grey River is located at Dobson, at the downstream end of the Brunner Gorge. The site is approximately 10km upstream of the river mouth, and has a catchment area of 3830km². Data for the Taramakau River is from the Taramakau at Greenstone Bridge water level recording site; downstream of the Taramakau/Taipo confluence. It has a catchment area of 863km². As of 2016, the Taramakau and Taipo flow sites are no longer operational. Flows at the hypothetical Grey River power scheme is now correlated with the measured data at the Grey at Dobson flow site (maintained by NIWA).

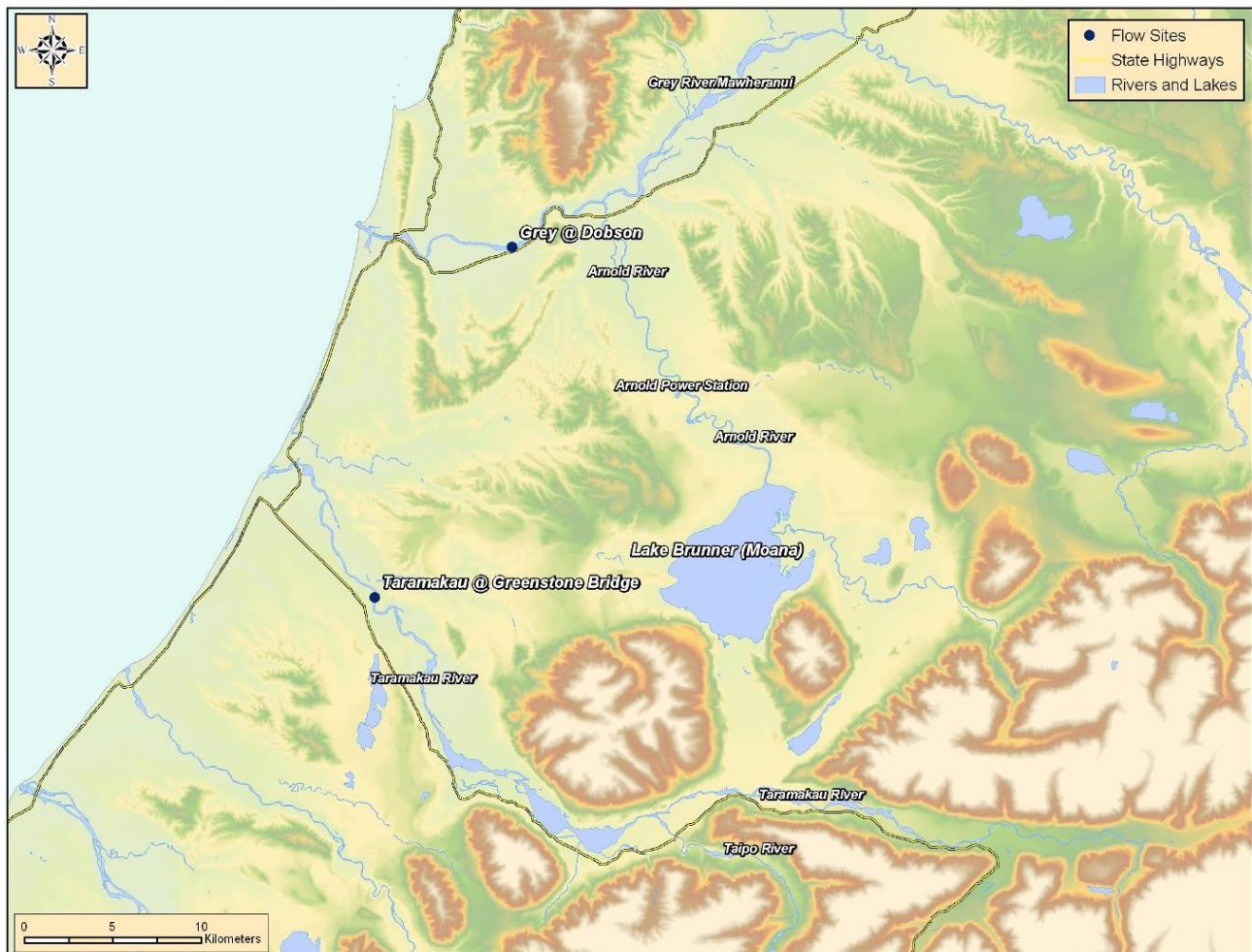


Figure 3.10: Grey, Taramakau and Taipo Rivers and key locations

3.10 Waiau River, Canterbury

The Waiau River is located in north Canterbury in the South Island. It rises in the Spenser Mountains and flows eastwards to the Pacific Ocean. The catchment is approximately 3300km². This is a different Waiau River than the Waiau River associated with the Manapouri Power Scheme.

Four possible hydro-power scheme sites have been identified along this river; the Clarence to Waiau Diversion, Upper Waiau, Mid Waiau, and Lower Waiau. HMD records have been developed for three sites within the catchment; these are: Clarence at Jollies (Clarence diversion), Waiau at Glenhope (Upper Waiau), and Waiau at Marble Point (Mid Waiau).

The Clarence diversion is important to a Waiau Power Scheme as flow from the Clarence catchment could be diverted into the Waiau near Hamner Springs to maximise generation. Figure 3.11 shows the possible Waiau River schemes.

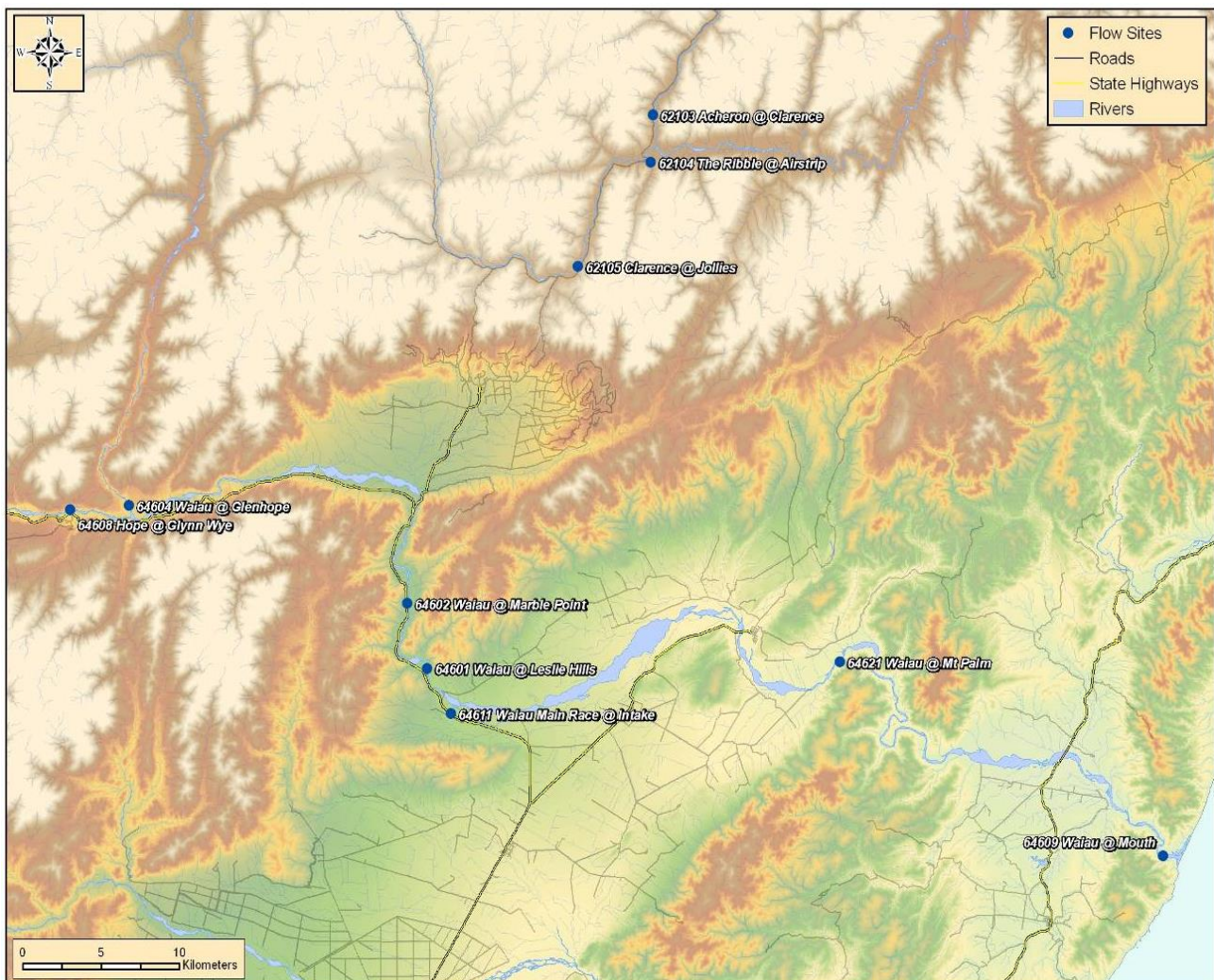


Figure 3.11: Waiau River and key locations

3.11 Wairau River, Marlborough

The Wairau River is one of the longest rivers in the South Island. It flows 170km from the Spenser Mountains north and then northeast down a long straight valley and out to the coast at Cloudy Bay, north of Blenheim.

The proposed scheme in the Wairau River is an extension of the Branch River hydro-electric scheme. It would involve diverting water from the Wairau River into the existing Branch scheme through interconnecting canals and penstocks to new power stations. The tailrace of the last station would be approximately 25km southwest of Blenheim. The Wairau at Dip Flat record is important for this scheme. Figure 3.12 is a location map of possible power schemes for the Wairau River.

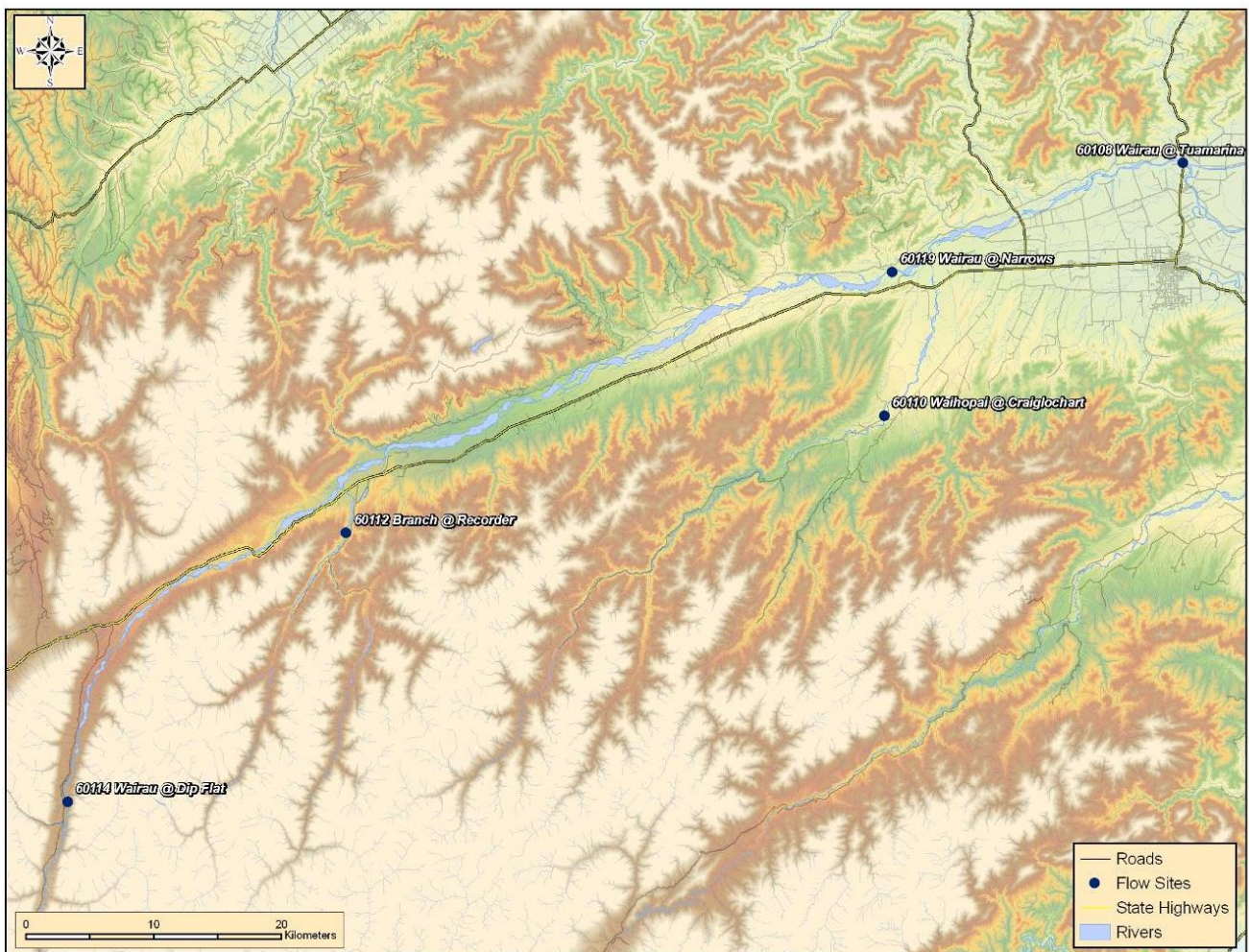


Figure 3.12: Wairau River and key locations

3.12 Hurunui River, Canterbury

The Hurunui River has a catchment area of 2670km² and flows from the eastern side of the Southern Alps to the Pacific Ocean south of Cheviot.

There are two options for a proposed hydro-power scheme along the Hurunui River. The first is upstream of State Highway 1 Bridge near the mouth of the river, and the second is upstream of the Hurunui at Mandamus flow recorder. These sites are shown in Figure 3.13.

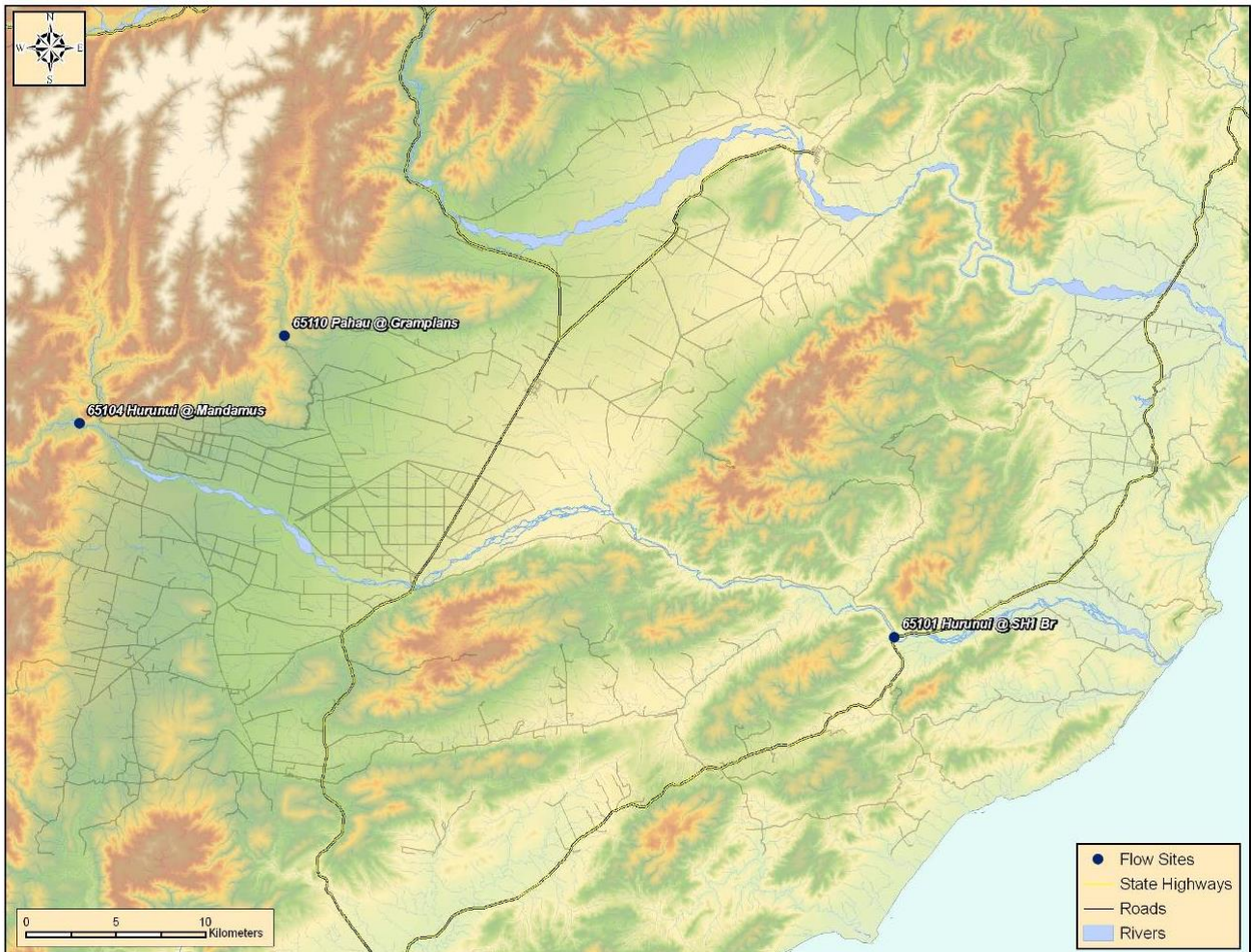


Figure 3.13: Hurunui River and key locations



Opus International Consultants Ltd

L10, Majestic Centre, 100 Willis St
PO Box 12 003, Thorndon, Wellington 6144
New Zealand

t: +64 4 471 7000

f: +64 4 499 3699

w: www.opus.co.nz